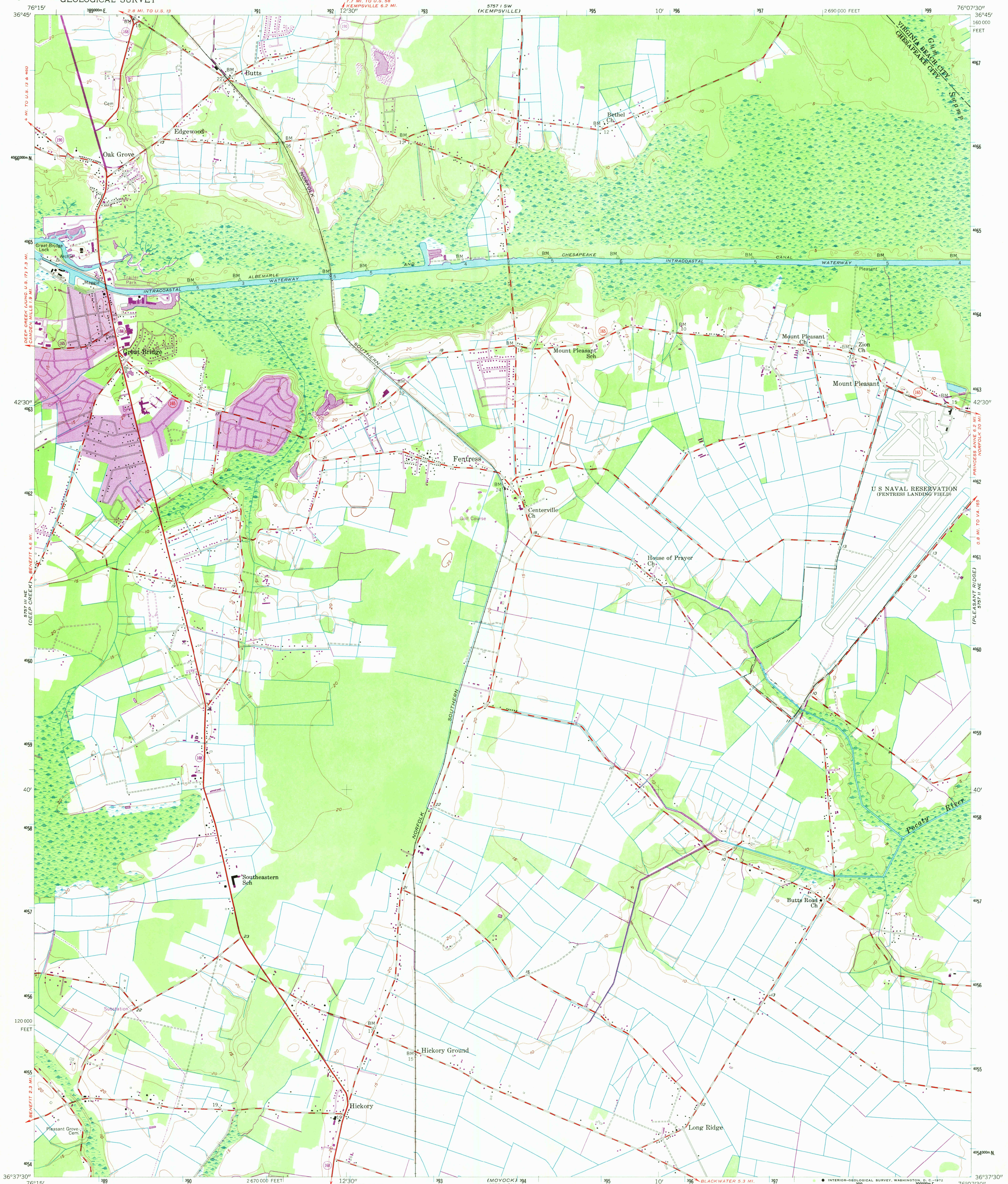


5757 U.S.E.
(NORFOLK SOUTH)

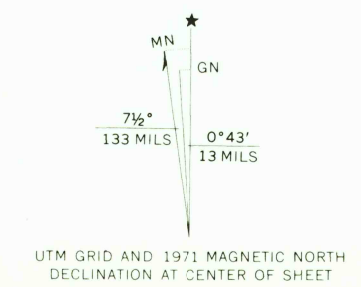
UNITED STATES
DEPARTMENT OF THE INTERIOR
GEOLOGICAL SURVEY

FENTRESS QUADRANGLE
VIRGINIA
7.5 MINUTE SERIES (TOPOGRAPHIC)

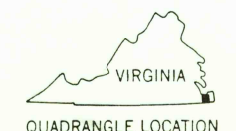
5757 U.S.E.
(PRINCESS ANNE)



Mapped, edited, and published by the Geological Survey
Control by USGS, USC&GS, and USCE
Culture and drainage in part compiled from aerial photographs
taken 1953. Topography enlarged from 1:62 500 scale map of
Moyock quadrangle, 15 minute series. Original map by planetable
surveys 1938-1939. Revised 1954
Polyconic projection. 1927 North American datum
10,000-foot grid based on Virginia coordinate system,
south zone
1000-meter Universal Transverse Mercator grid ticks,
zone 18, shown in blue
Revisions shown in purple compiled in cooperation with
Commonwealth of Virginia agencies from aerial photographs
taken 1971. This information not field checked
Purple tint indicates extension of urban areas



SCALE 1:24 000
CONTOUR INTERVAL 5 FEET
DATUM IS MEAN SEA LEVEL
THIS MAP COMPLIES WITH NATIONAL MAP ACCURACY STANDARDS
FOR SALE BY U.S. GEOLOGICAL SURVEY, WASHINGTON, D. C. 20242
AND VIRGINIA DIVISION OF MINERAL RESOURCES, CHARLOTTESVILLE, VIRGINIA 22903
A FOLDER DESCRIBING TOPOGRAPHIC MAPS AND SYMBOLS IS AVAILABLE ON REQUEST



ROAD CLASSIFICATION
Heavy-duty ——— Light-duty ———
Medium-duty ——— Unimproved dirt ———
U.S. Route ——— State Route ———

FENTRESS, VA.
N3637.5-W7607.5/7.5
1954
PHOTOREVISED 1971
AMS 5757 II NW-SERIES V834

USGS
HISTORICAL FILE
TOPOGRAPHIC DIVISION

APR 21 1972

2560