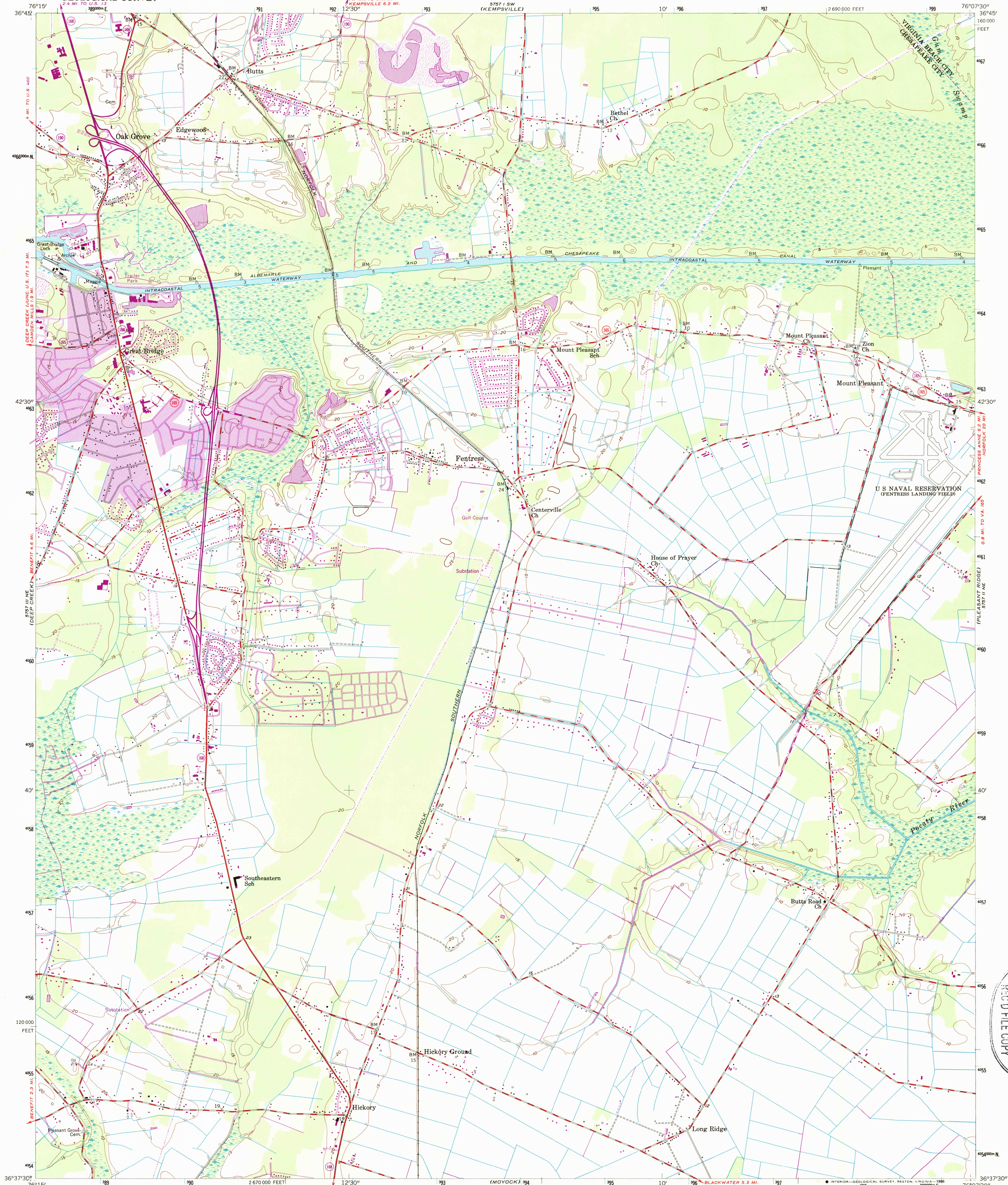
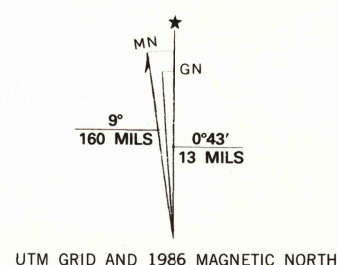


UNITED STATES
DEPARTMENT OF THE INTERIOR
GEOLOGICAL SURVEY

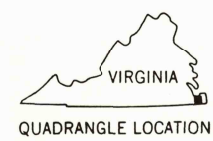
FENTRESS QUADRANGLE
VIRGINIA
7.5 MINUTE SERIES (TOPOGRAPHIC)



Mapped, edited, and published by the Geological Survey
Control by USGS, USC&GS, and USCE
Culture and drainage in part compiled from aerial photographs
taken 1953. Topography enlarged from 1:62 500 scale map of
Moyock quadrangle, 15 minute series. Original map by planetable
surveys 1938-1939. Revised 1954
Polyconic projection. 1927 North American datum
10,000-foot grid based on Virginia coordinate system,
south zone
1000-meter Universal Transverse Mercator grid ticks,
zone 18, shown in blue
To place on the predicted North American Datum 1983
move the projection lines 11 meters south and
30 meters west as shown by dashed corner ticks
There may be private inholdings within the boundaries of
the National or State reservations shown on this map



CONTOUR INTERVAL 5 FEET
NATIONAL GEODETIC VERTICAL DATUM OF 1929
THIS MAP COMPLIES WITH NATIONAL MAP ACCURACY STANDARDS
FOR SALE BY U. S. GEOLOGICAL SURVEY, RESTON, VIRGINIA 22092
AND VIRGINIA DIVISION OF MINERAL RESOURCES, CHARLOTTESVILLE, VIRGINIA 22903
A FOLDER DESCRIBING TOPOGRAPHIC MAPS AND SYMBOLS IS AVAILABLE ON REQUEST



ROAD CLASSIFICATION
Heavy-duty ——— Light-duty ———
Medium-duty ——— Unimproved dirt ———
U. S. Route ——— State Route ———

FENTRESS, VA.
36076-F2-TF-024

Revisions shown in purple compiled in cooperation with Commonwealth
of Virginia agencies from aerial photographs taken 1982 and other
source data. This information not field checked. Map edited 1986
Purple tint indicates extension of urban areas

1954
PHOTOREVISED 1986
DMA 5751 II NW—SERIES V834

USGS NHD HISTORICAL MAP
SEP 22 1986
REC'D FILE COPY