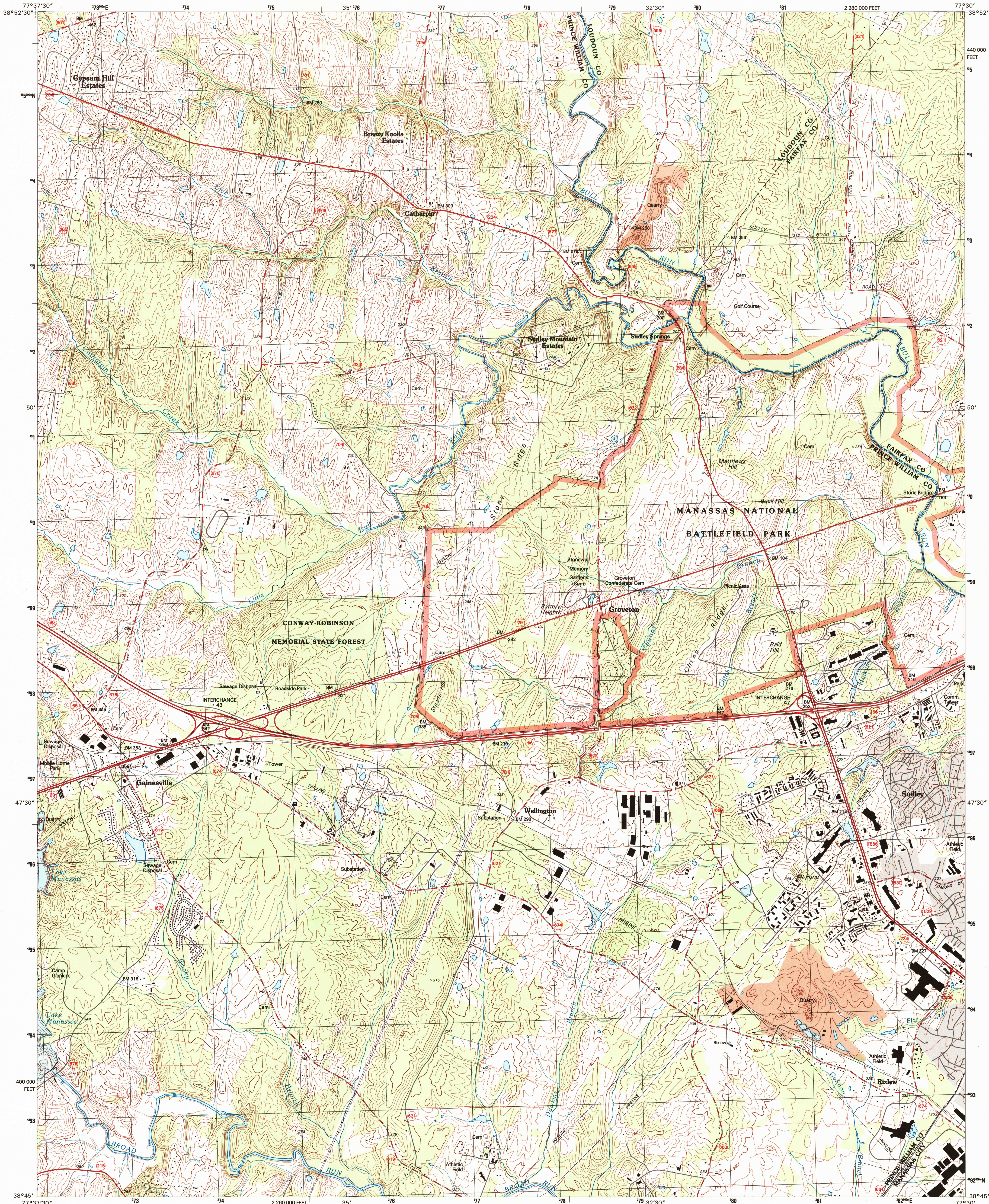
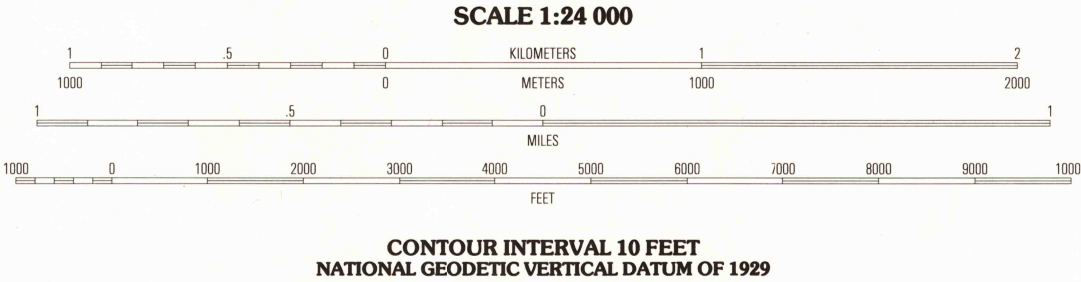
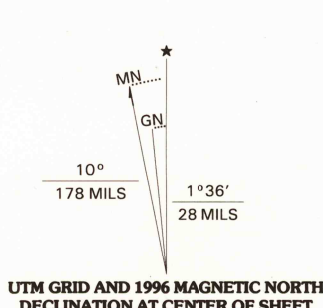


UNITED STATES
DEPARTMENT OF THE INTERIOR
GEOLOGICAL SURVEY

GAINESVILLE QUADRANGLE
VIRGINIA
7.5-MINUTE SERIES (TOPOGRAPHIC)



Produced by the United States Geological Survey
Compiled by photogrammetric methods from imagery dated 1964
Field checked 1968. Revised from imagery dated 1969
Survey control current as of 1968. Map edited 1996
Contours not revised. Contours that conflict with
revised planimetry are dashed
North American Datum of 1927 (NAD 27). Projection and
10 000-meter grid: Universal Transverse Mercator, zone 18
10 000-foot ticks: Virginia coordinate system, north zone
North American Datum of 1983 (NAD 83) is shown by dashed
corner ticks. The values of the shift between NAD 27 and NAD 83
for 7.5-minute intersections are obtainable from National Geodetic
Survey NADCON software
There may be private inholdings within the boundaries of
the National or State reservations shown on this map



THIS MAP COMPLIES WITH NATIONAL MAP ACCURACY STANDARDS
FOR SALE BY U.S. GEOLOGICAL SURVEY, DENVER, COLORADO 80225, OR RESTON, VIRGINIA 22092
AND VIRGINIA DIVISION OF MINERAL RESOURCES, CHARLOTTESVILLE, VIRGINIA 22903
A FOLDER DESCRIBING TOPOGRAPHIC MAPS AND SYMBOLS IS AVAILABLE ON REQUEST

ROAD CLASSIFICATION

Primary highway
hard surface
Secondary highway
hard surface
Light-duty road, hard or
improved surface
Unimproved road

U.S. Route
State Route

QUADRANGLE LOCATION

1	2	3
4	5	6
7	8	

1 Middleburg
2 Arcola
3 Herndon
4 Thoroughfare Gap
5 Manassas
6 Catlett
7 Nokesville
8 Independent Hill

DEC 9 1996
REC'D FILE COPY

GAINESVILLE, VA
38077-GS-TF-024
1989

DMA 5461 | SE-SERIES V834

