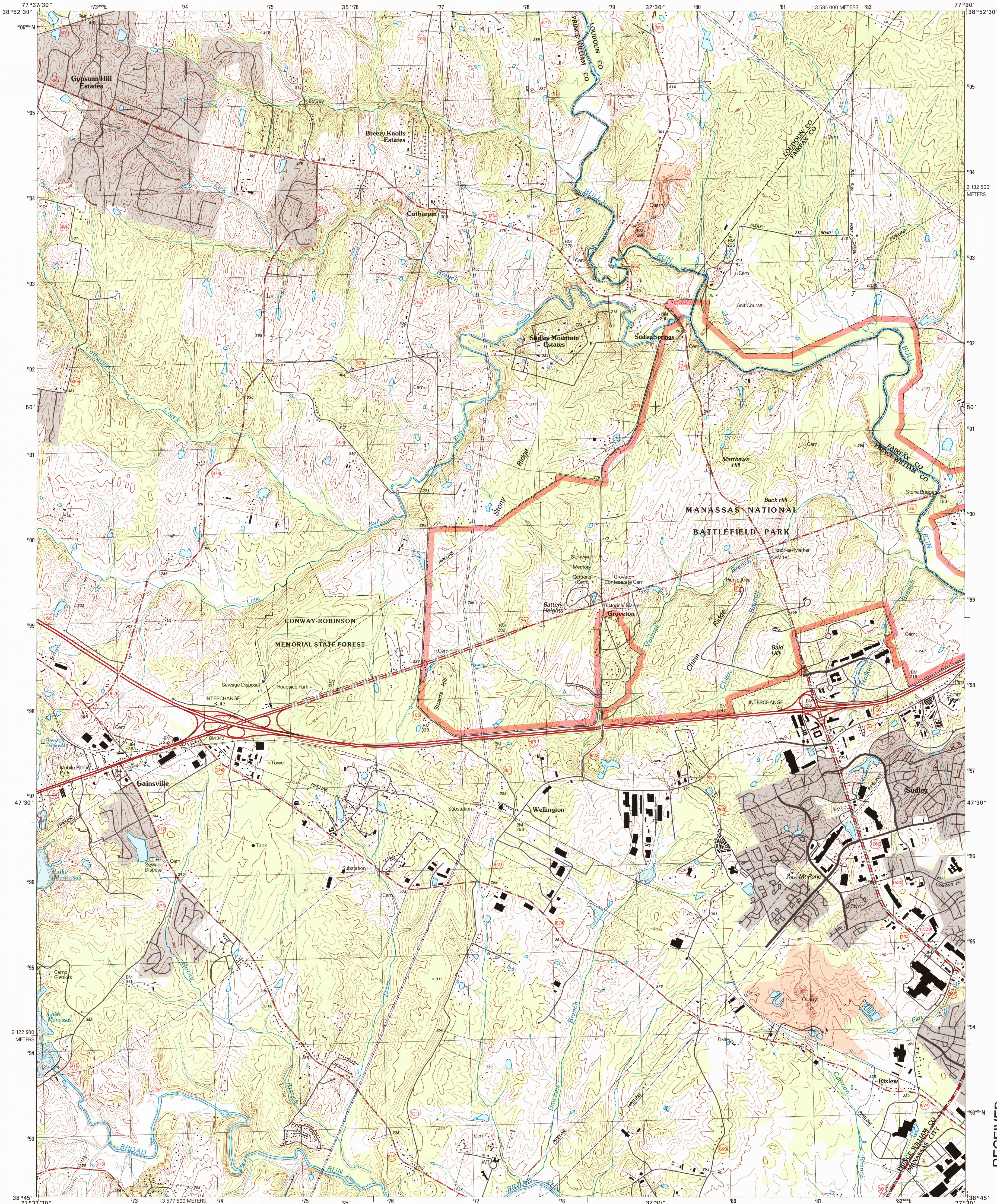


UNITED STATES
DEPARTMENT OF THE INTERIOR
GEOLOGICAL SURVEY

GAINESVILLE QUADRANGLE
VIRGINIA
7.5-MINUTE SERIES (TOPOGRAPHIC)



Produced by the United States Geological Survey
Topography compiled 1964. Planimetry derived from imagery taken 1994. Survey control current as of 1968. Contours that conflict with updated major features are dashed.
North American Datum of 1983 (NAD 83). Projection and 1000-meter grid: Universal Transverse Mercator, zone 18. 2 500-meter ticks: Virginia Coordinate System of 1983 (north zone).
North American Datum of 1927 (NAD 27) is shown by dashed corner ticks. The values of the shift between NAD 83 and NAD 27 for 7.5-minute intersections are obtainable from National Geodetic Survey NADCON software.
There may be private inholdings within the boundaries of the National or State reservations shown on this map.

UTM GRID AND 1998 MAGNETIC NORTH DECLINATION AT CENTER OF SHEET

SCALE 1:24 000
KILOMETERS
METERS
MILES
FEET
CONTOUR INTERVAL 10 FEET
NATIONAL GEODETIC VERTICAL DATUM OF 1929
TO CONVERT FROM FEET TO METERS, MULTIPLY BY 0.3048



QUADRANGLE LOCATION

ROAD CLASSIFICATION
Primary highway
hard surface
Secondary highway
hard surface
Interstate Route
U.S. Route
State Route
Light-duty road, hard or
improved surface
Unimproved road

1	2	3
4	5	6
7	8	9

1 Middleburg
2 Arcola
3 Herndon
4 Throughfare Gap
5 Manassas
6 Catlett
7 Nokesville
8 Independent Hill

GAINESVILLE, VA
1994

NIMA 5461 I SE-SERIES V834

RECEIVED

OCT 31 1998

USGS NMD
HISTORICAL MAP ARCHIVES

