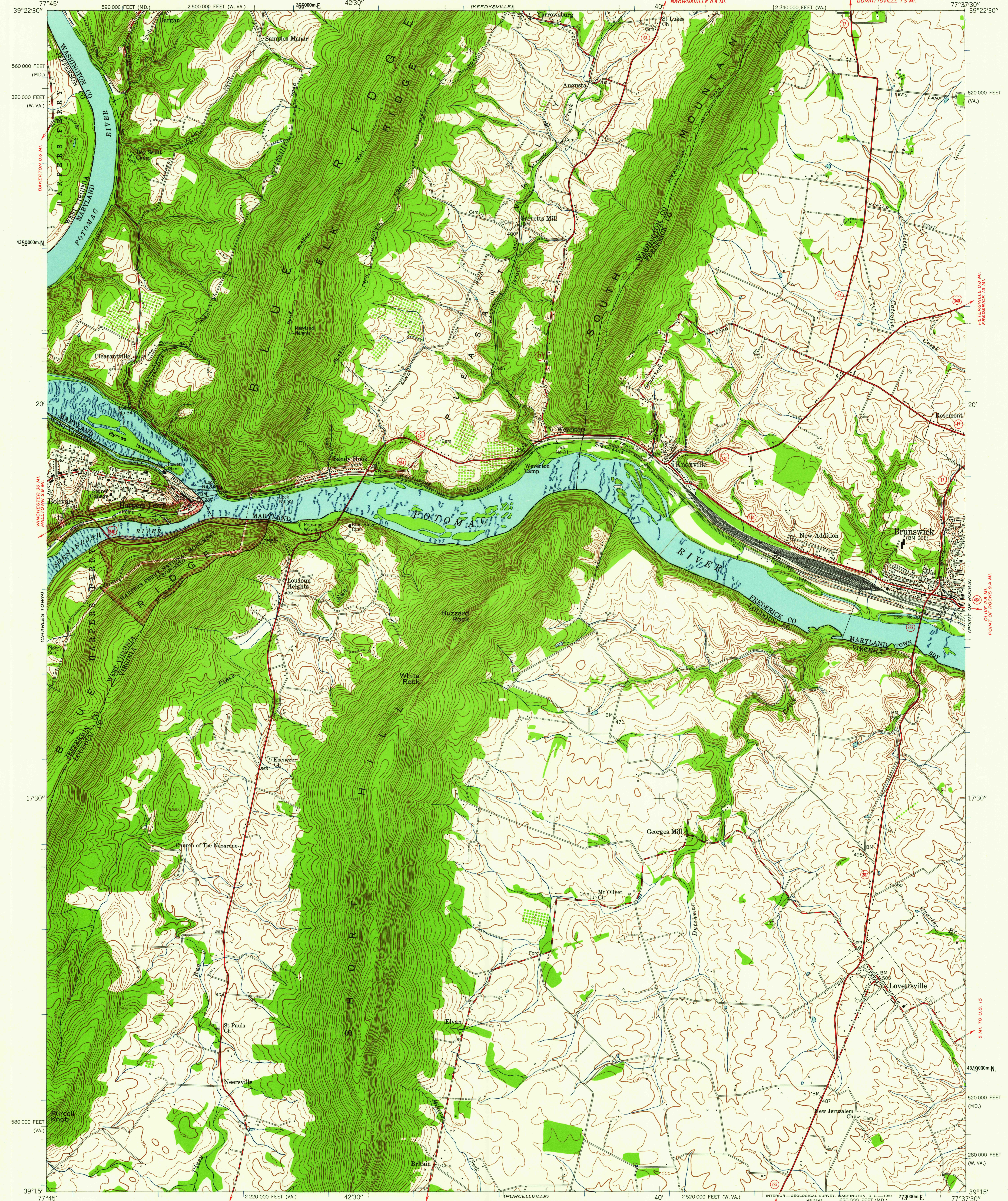


UNITED STATES
DEPARTMENT OF THE INTERIOR
GEOLOGICAL SURVEY

UNITED STATES
DEPARTMENT OF THE ARMY
CORPS OF ENGINEERS

HARPERS FERRY QUADRANGLE
VIRGINIA—MARYLAND—WEST VIRGINIA
7.5 MINUTE SERIES (TOPOGRAPHIC)
SW 1/4 ANTIETAM 15' QUADRANGLE
BURKITTSVILLE 1.5 MI.

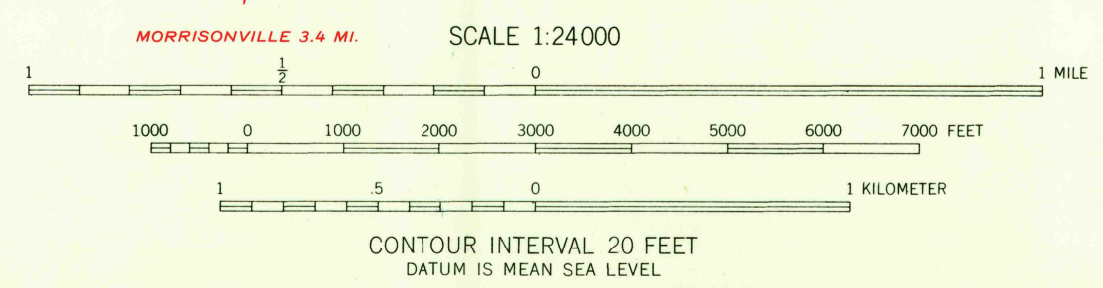


Mapped by the Army Map Service
Edited and published by the Geological Survey

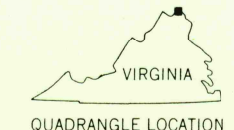
Control by USGS, USC&GS, and USSCS
Topography from aerial photographs by photogrammetric
methods. Aerial photographs taken 1943. Field check 1944
Culture revised by the Geological Survey 1955

Polyconic projection. 1927 North American datum
10,000-foot grids based on Virginia coordinate system,
north zone, Maryland coordinate system and West Virginia
coordinate system, north zone
1000-meter Universal Transverse Mercator grid ticks,
zone 18, shown in blue
Unchecked elevations are shown in brown

TRUE NORTH
MAGNETIC NORTH
APPROXIMATE MEAN
DECLINATION, 1955



USGS
Historical File
Topographic Division



ROAD CLASSIFICATION
Heavy-duty ——— Light-duty ———
Medium-duty ——— Unimproved dirt ———
U.S. Route ——— State Route ———

HARPERS FERRY, VA.—MD.—W. VA.
SW 1/4 ANTIETAM 15' QUADRANGLE
N3915—W7737.5/7.5
1955

RETURN TO:
USGS AND HISTORICAL MAP ARCHIVES

6140