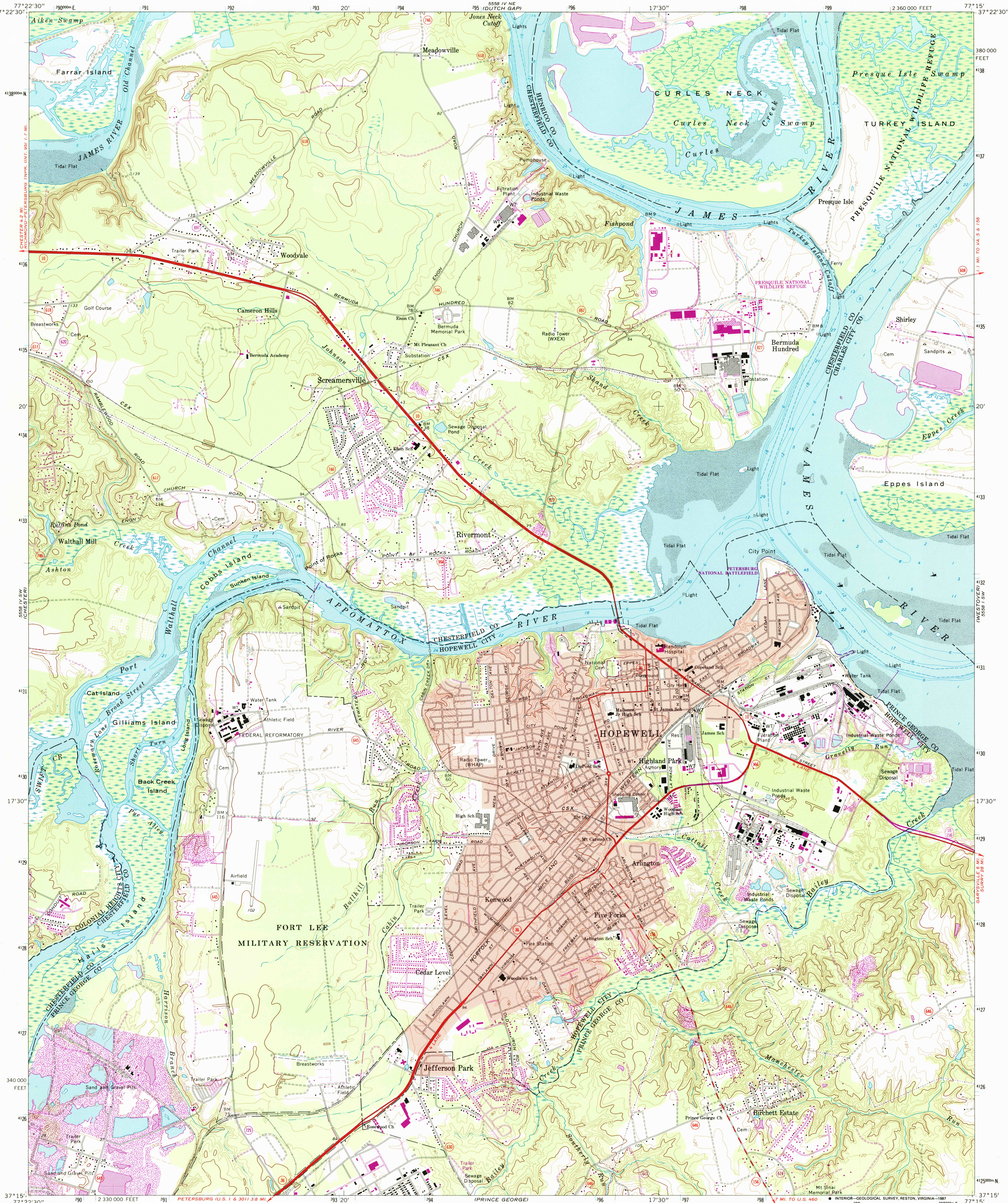
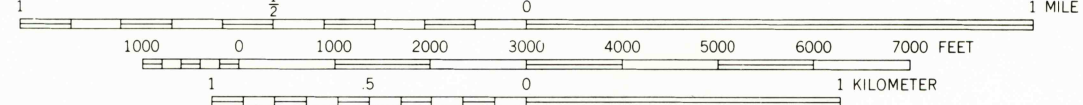
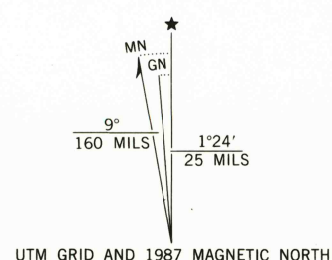


UNITED STATES
DEPARTMENT OF THE INTERIOR
GEOLOGICAL SURVEY

HOPEWELL QUADRANGLE
VIRGINIA
7.5 MINUTE SERIES (TOPOGRAPHIC)



Mapped, edited, and published by the Geological Survey
Revised in cooperation with Commonwealth of Virginia agencies
Control by USGS and NOS/NOAA
Topography by planetable surveys 1940. Revised from aerial
photographs taken 1968. Field checked 1969
Selected hydrographic data compiled from NOS chart 531 (1969)
This information is not intended for navigational purposes
Polyconic projection. 10,000-foot grid based on Virginia coordinate system,
south zone. 1000-meter Universal Transverse Mercator grid ticks, zone
18, shown in blue. 1927 North American Datum
To place on the predicted North American Datum 1983
move the projection lines 11 meters south and 27 meters west
as shown by dashed corner ticks
Fine red dashed lines indicate selected fence and field lines where
generally visible on aerial photographs. This information is unchecked
Red tint indicates areas in which only landmark buildings are shown
There may be private inholdings within the boundaries of the
National or State reservations shown on this map



CONTOUR INTERVAL 10 FEET
NATIONAL GEODETIC VERTICAL DATUM OF 1929
DEPTH CURVES AND SOUNDINGS IN FEET—DATUM IS MEAN LOW WATER
THE RELATIONSHIP BETWEEN THE TWO DATUMS IS VARIABLE
SHORELINE SHOWN REPRESENTS THE APPROXIMATE LINE OF MEAN HIGH WATER
THE MEAN RANGE OF TIDE IS APPROXIMATELY 2.6 FEET
THIS MAP COMPLIES WITH NATIONAL MAP ACCURACY STANDARDS
FOR SALE BY U. S. GEOLOGICAL SURVEY, DENVER, COLORADO 80225 OR RESTON, VIRGINIA 22092,
AND VIRGINIA DIVISION OF MINERAL RESOURCES, CHARLOTTESVILLE, VIRGINIA 22903
A FOLDER DESCRIBING TOPOGRAPHIC MAPS AND SYMBOLS IS AVAILABLE ON REQUEST



ROAD CLASSIFICATION
Primary highway, all weather,
hard surface
Secondary highway, all weather,
hard surface
Light-duty road, all weather,
improved surface
Unimproved road, fair or dry
weather
State Route

HOPEWELL, VA.
37077-C3-TF-024

1969
PHOTOREVISED 1987
DMA 5558 IV SE—SERIES V834

Revisions shown in purple and woodland compiled in cooperation
with Commonwealth of Virginia agencies from aerial photographs
taken 1984 and other sources. This information not field checked
Map edited 1987
Purple tint indicates extension of urban areas

USGS NHD HISTORICAL MAP
SEP 09 1988
REC'D FILE COPY