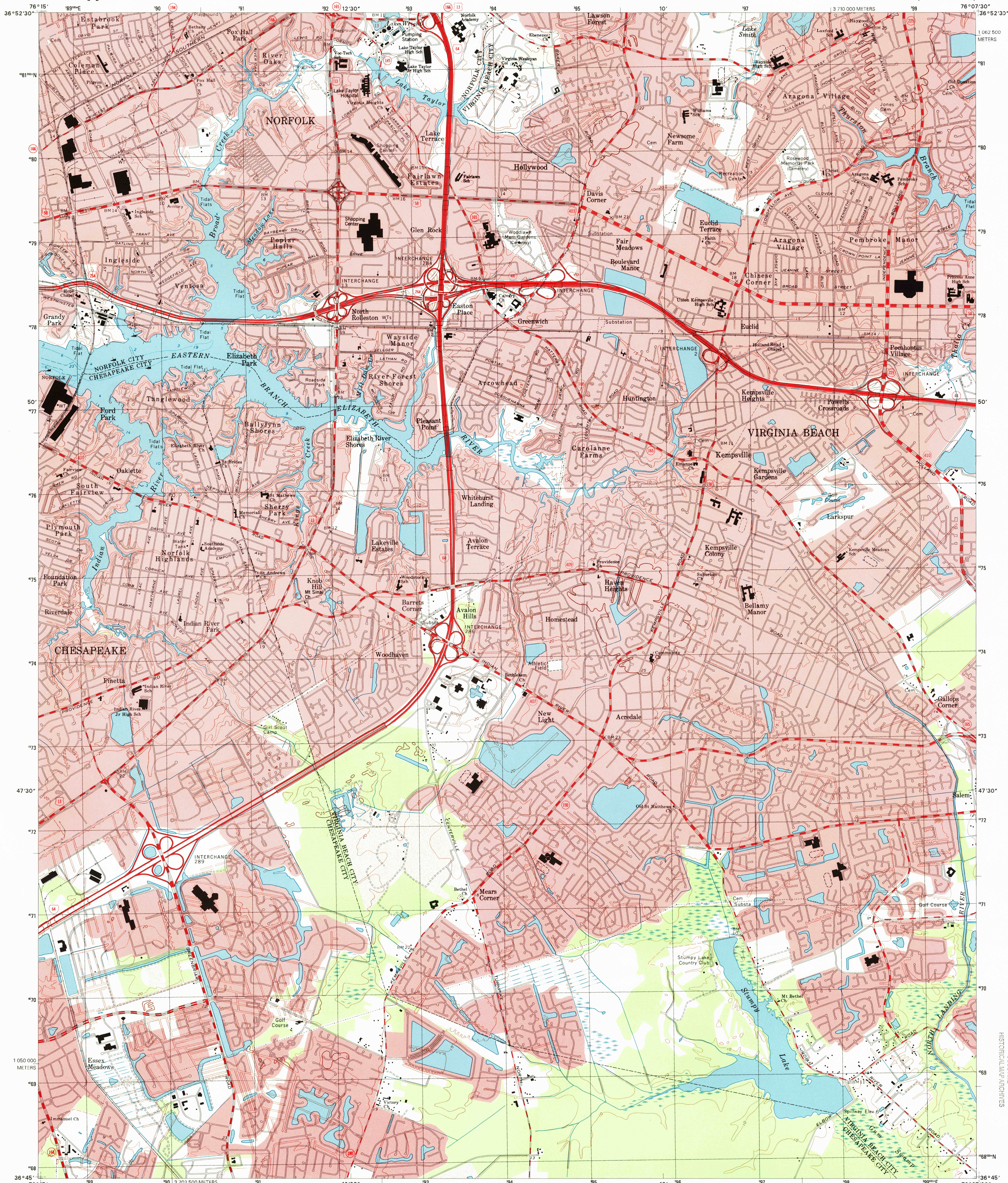




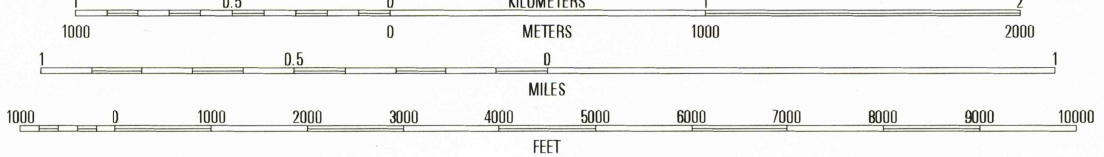
U.S. DEPARTMENT OF THE INTERIOR  
U.S. GEOLOGICAL SURVEY

KEMPSVILLE QUADRANGLE  
VIRGINIA  
7.5-MINUTE SERIES (TOPOGRAPHIC)

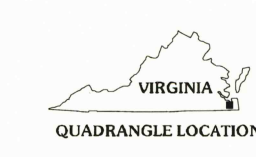


Produced by the United States Geological Survey  
Topography compiled 1963. Planimetry derived from imagery taken 1994 and other sources. Survey control current as of 1965. Selected hydrographic data compiled from NOS Chart 452 (1965). This information is not intended for navigational purposes.  
North American Datum of 1983 (NAD 83). Projection and 1 000-meter grid: Universal Transverse Mercator, zone 18. 2 500-meter ticks: Virginia Coordinate System of 1983 (South zone).  
North American Datum of 1927 (NAD 27) is shown by dashed corner ticks. The values of the shift between NAD 83 and NAD 27 for 7.5-minute intersections are obtainable from National Geodetic Survey NADCON software.  
Landmark buildings verified 1965.

UTM GRID AND 1999 MAGNETIC NORTH DECLINATION AT CENTER OF SHEET



SCALE 1:24 000  
CONTOUR INTERVAL 5 FEET  
NATIONAL GEODETIC VERTICAL DATUM OF 1929  
TO CONVERT FROM FEET TO METERS, MULTIPLY BY 0.3048  
DEPTH CURVES AND SOUNDINGS IN FEET. DATUM IS MEAN LOWER LOW WATER  
THE RELATIONSHIP BETWEEN THE TWO DATUMS IS VARIABLE  
THE MEAN RANGE OF TIDE IS APPROXIMATELY 2.8 FEET  
THIS MAP COMPLIES WITH NATIONAL MAP ACCURACY STANDARDS  
FOR SALE BY U.S. GEOLOGICAL SURVEY, P.O. BOX 25286, DENVER, COLORADO 80225  
AND VIRGINIA DIVISION OF MINERAL RESOURCES, CHARLOTTESVILLE, VIRGINIA 22903  
A FOLDER DESCRIBING TOPOGRAPHIC MAPS AND SYMBOLS IS AVAILABLE ON REQUEST



ROAD CLASSIFICATION  
Primary highway .....  
Secondary highway .....  
Light-duty road, hard or improved surface .....  
Unimproved road .....  
Interstate Route .....  
U.S. Route .....  
State Route .....

1	2	3
4	5	6
7	8	

KEMPSVILLE, VA  
1994

NIMA 5757 1 SW-SERIES V834

RECEIVED  
MAY 31 2000  
USGS M&D  
HISTORICAL MAP ARCHIVES

