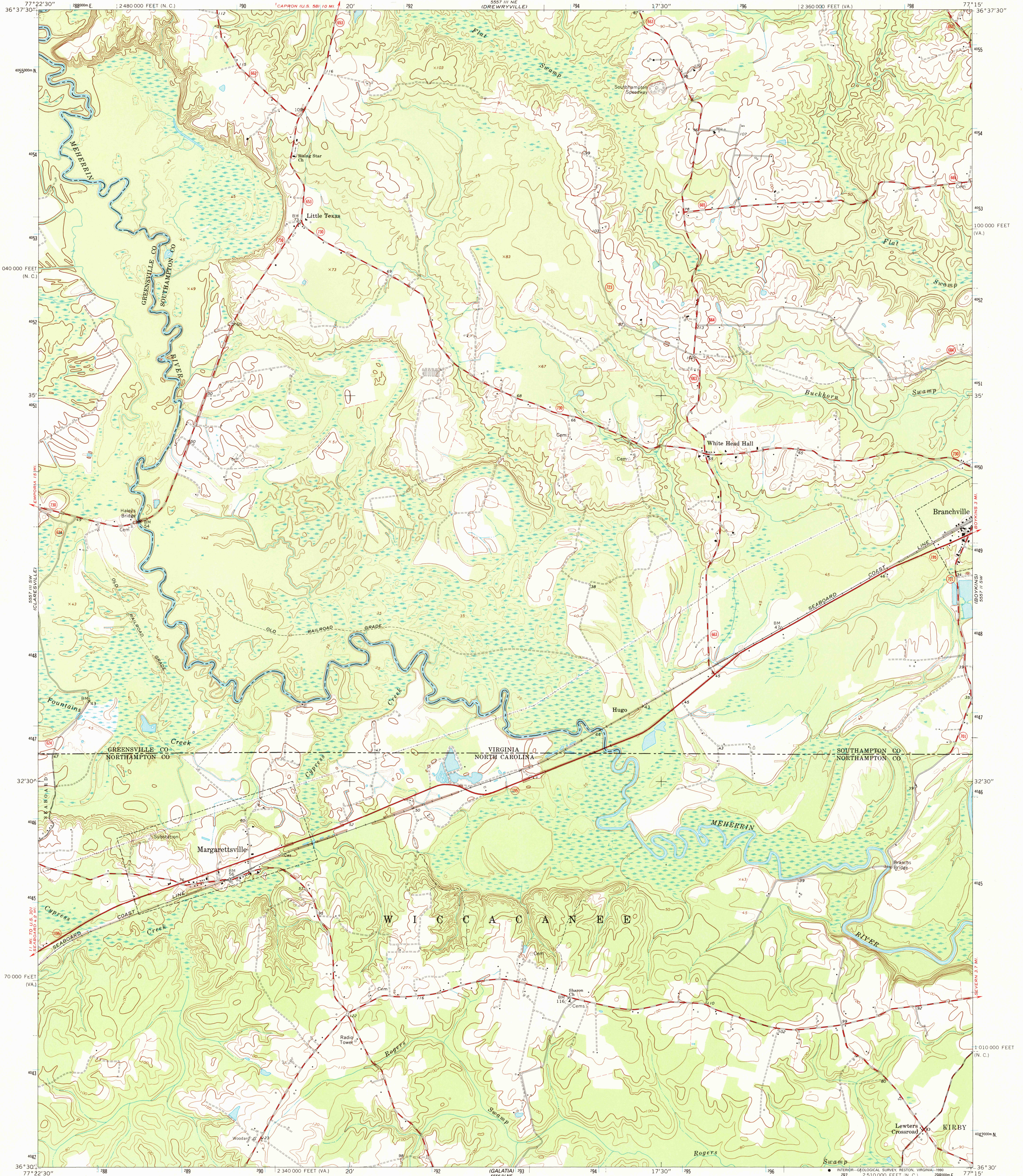


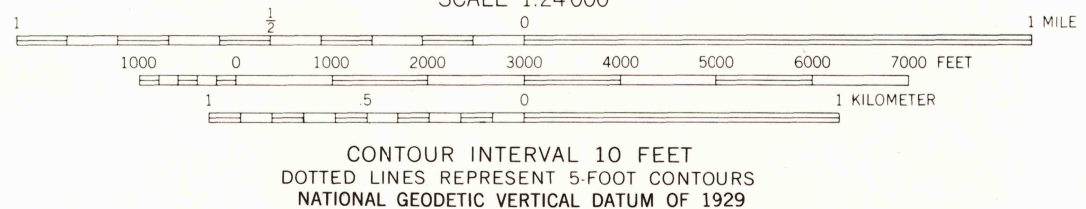
UNITED STATES
DEPARTMENT OF THE INTERIOR
GEOLOGICAL SURVEY

MARGARETTSVILLE QUADRANGLE
VIRGINIA—NORTH CAROLINA
7.5 MINUTE SERIES (TOPOGRAPHIC)
SE/4 ARRINDALE 15' QUADRANGLE



Mapped, edited, and published by the Geological Survey
Control by USGS and USC&GS
Topography by photogrammetric methods from aerial
photographs taken 1962. Field checked 1966
Polyconic projection. 1927 North American datum
10,000-foot grids based on Virginia coordinate system,
south zone, and North Carolina coordinate system
1000-meter Universal Transverse Mercator grid ticks,
zone 18, shown in blue
Fine red dashed lines indicate selected fence and field lines where
generally visible on aerial photographs. This information is unchecked
To place on the predicted North American Datum 1983
move the projection lines 12 meters south and
28 meters west as shown by dashed corner ticks

Map photinspected 1978
No major culture or drainage changes observed



THIS MAP COMPLIES WITH NATIONAL MAP ACCURACY STANDARDS
FOR SALE BY U.S. GEOLOGICAL SURVEY, DENVER, COLORADO 80225,
OR RESTON, VIRGINIA 22092
AND VIRGINIA DIVISION OF MINERAL RESOURCES, CHARLOTTESVILLE, VIRGINIA 22903
A FOLDER DESCRIBING TOPOGRAPHIC MAPS AND SYMBOLS IS AVAILABLE ON REQUEST

ROAD CLASSIFICATION
Heavy-duty ——— Light-duty ———
Medium-duty ——— Unimproved dirt ———
State Route

MAY 25 1989
REC'D FILE COPY

MARGARETTSVILLE, VA.—N. C.
SE/4 ARRINDALE 15' QUADRANGLE
36077-E3-TF-024
1966
PHOTOINSPECTED 1978
DMA 5557 III SE—SERIES V834