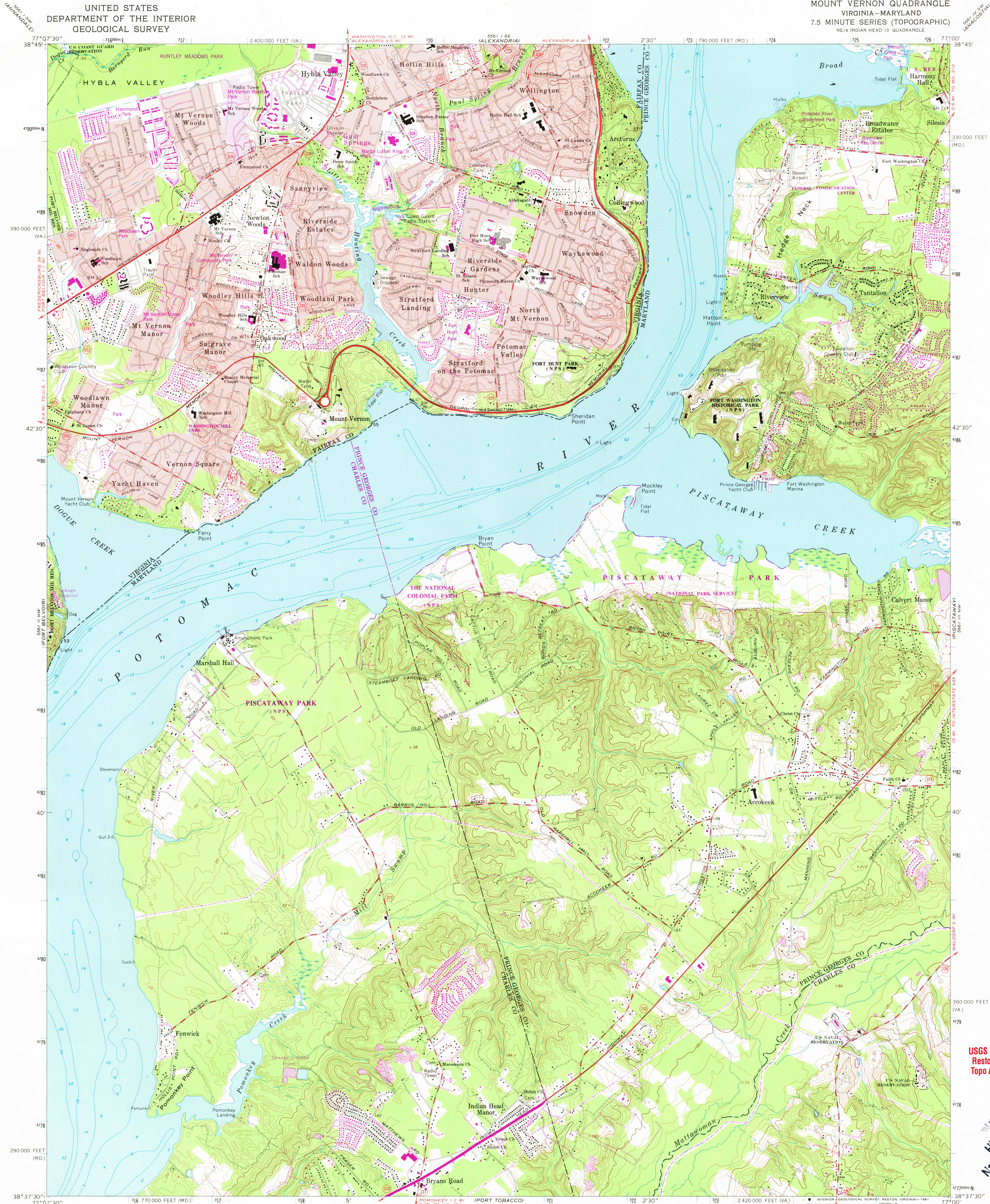
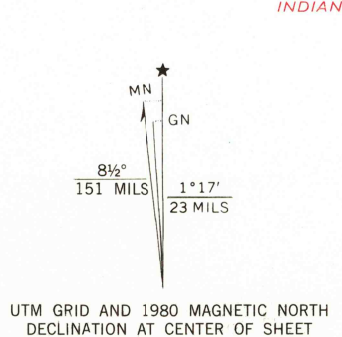


UNITED STATES
DEPARTMENT OF THE INTERIOR
GEOLOGICAL SURVEY

MOUNT VERNON QUADRANGLE
VIRGINIA-MARYLAND
7.5 MINUTE SERIES (TOPOGRAPHIC)
NE 1/4 INDIAN HEAD 15 QUADRANGLE



Mapped by the Defense Mapping Agency
Edited and published by the Geological Survey
Control by USGS, NOS/NOAA, and USCE
Topography by photogrammetric methods from aerial photographs
taken 1950. Field checked 1951. Revised by the Geological Survey
from aerial photographs taken 1963-1964. Field checked 1966.
Selected hydrographic data compiled from NOS chart 560 (1966).
This information is not intended for navigational purposes.
Polyconic projection. 10,000-foot grids based on Maryland coordinate
system, and Virginia coordinate system, north zone. 1000-meter
Universal Transverse Mercator grid ticks, zone 18, shown in blue
1927 North American Datum. To place on the predicted North
American Datum 1983 move the projection lines 9 meters south
and 26 meters west as shown by dashed corner ticks.
Fine red dashed lines indicate selected fence and field lines where
generally visible on aerial photographs. This information is unchecked.
Red tint indicates areas in which only landmark buildings are shown.
There may be private inholdings within the boundaries of
the National or State reservations shown on this map.



CONTOUR INTERVAL 10 FEET
NATIONAL GEODETIC VERTICAL DATUM OF 1929
DEPTH CURVES AND SOUNDINGS IN FEET-DATUM IS MEAN LOW WATER
THE RELATIONSHIP BETWEEN THE TWO DATUMS IS VARIABLE
SHORELINE SHOWN REPRESENTS THE APPROXIMATE LINE OF MEAN HIGH WATER
THE MEAN RANGE OF TIDE IS APPROXIMATELY 2.3 FEET
THIS MAP COMPLIES WITH NATIONAL MAP ACCURACY STANDARDS
FOR SALE BY U.S. GEOLOGICAL SURVEY, RESTON, VIRGINIA 22092
AND VIRGINIA DIVISION OF MINERAL RESOURCES, CHARLOTTESVILLE, VIRGINIA 22903
A FOLDER DESCRIBING TOPOGRAPHIC MAPS AND SYMBOLS IS AVAILABLE ON REQUEST

ROAD CLASSIFICATION
Heavy-duty ——— Light-duty ———
Medium-duty ——— Unimproved dirt ———
U.S. Route ——— State Route ———
MOUNT VERNON, VA.-MD.
NE 1/4 INDIAN HEAD 15 QUADRANGLE
N 3837.5 - W 7700.75
1966
PHOTOREVISED 1980
DMA 5561 II NE-SERIES V833

USGS Library
Reston, VA.
Topo Archive
USGS
Historical File
National Mapping Div.
MAR 12 1991
2 250