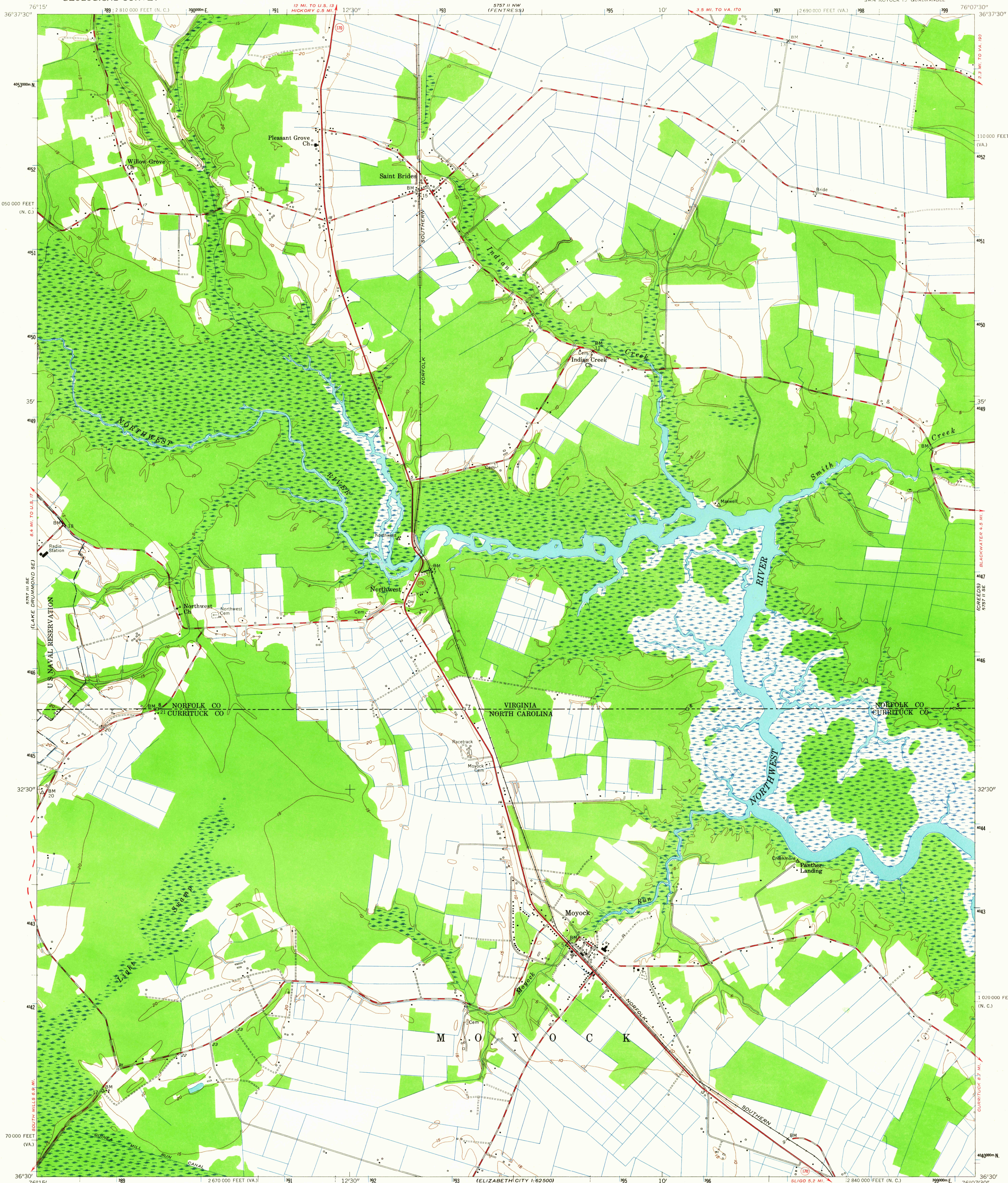
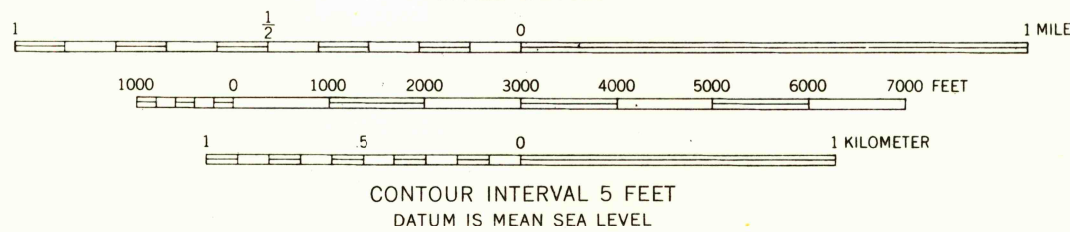
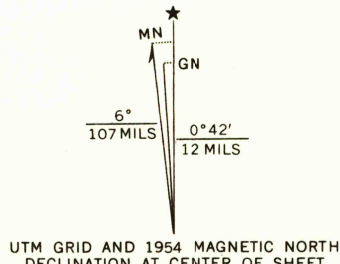


UNITED STATES  
DEPARTMENT OF THE INTERIOR  
GEOLOGICAL SURVEY

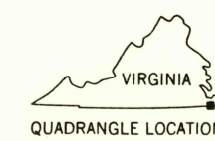
MOYOCK QUADRANGLE  
VIRGINIA—NORTH CAROLINA  
7.5 MINUTE SERIES (TOPOGRAPHIC)  
SW/4 MOYOCK 15' QUADRANGLE



Mapped, edited, and published by the Geological Survey  
Control by USGS and USC&GS  
Culture and drainage in part compiled from aerial photographs  
taken 1953. Topography enlarged from 1:62,500 scale map of  
Moyock quadrangle, 15 minute series. Original map by  
planetable surveys 1938-1939. Revised 1954  
Polyconic projection. 1927 North American datum  
10,000-foot grids based on Virginia coordinate system,  
south zone, and North Carolina coordinate system  
1000-meter Universal Transverse Mercator grid ticks,  
zone 18, shown in blue



THIS MAP COMPLIES WITH NATIONAL MAP ACCURACY STANDARDS  
FOR SALE BY U.S. GEOLOGICAL SURVEY, WASHINGTON, D. C. 20242  
A FOLDER DESCRIBING TOPOGRAPHIC MAPS AND SYMBOLS IS AVAILABLE ON REQUEST



USGS  
Historical File  
Topographic Division  
U.S.G.S.  
FILE COPY  
TOPOGRAPHIC DIVISION

ROAD CLASSIFICATION  
Heavy-duty ——— Light-duty ———  
Medium-duty ——— Unimproved dirt ———  
U.S. Route ——— State Route ———

MOYOCK, VA.—N.C.  
SW/4 MOYOCK 15' QUADRANGLE  
N 3630—W 7607.5/7.5  
1954  
AMS 5757 II SW—SERIES Y834

1540  
JAN 1 1955