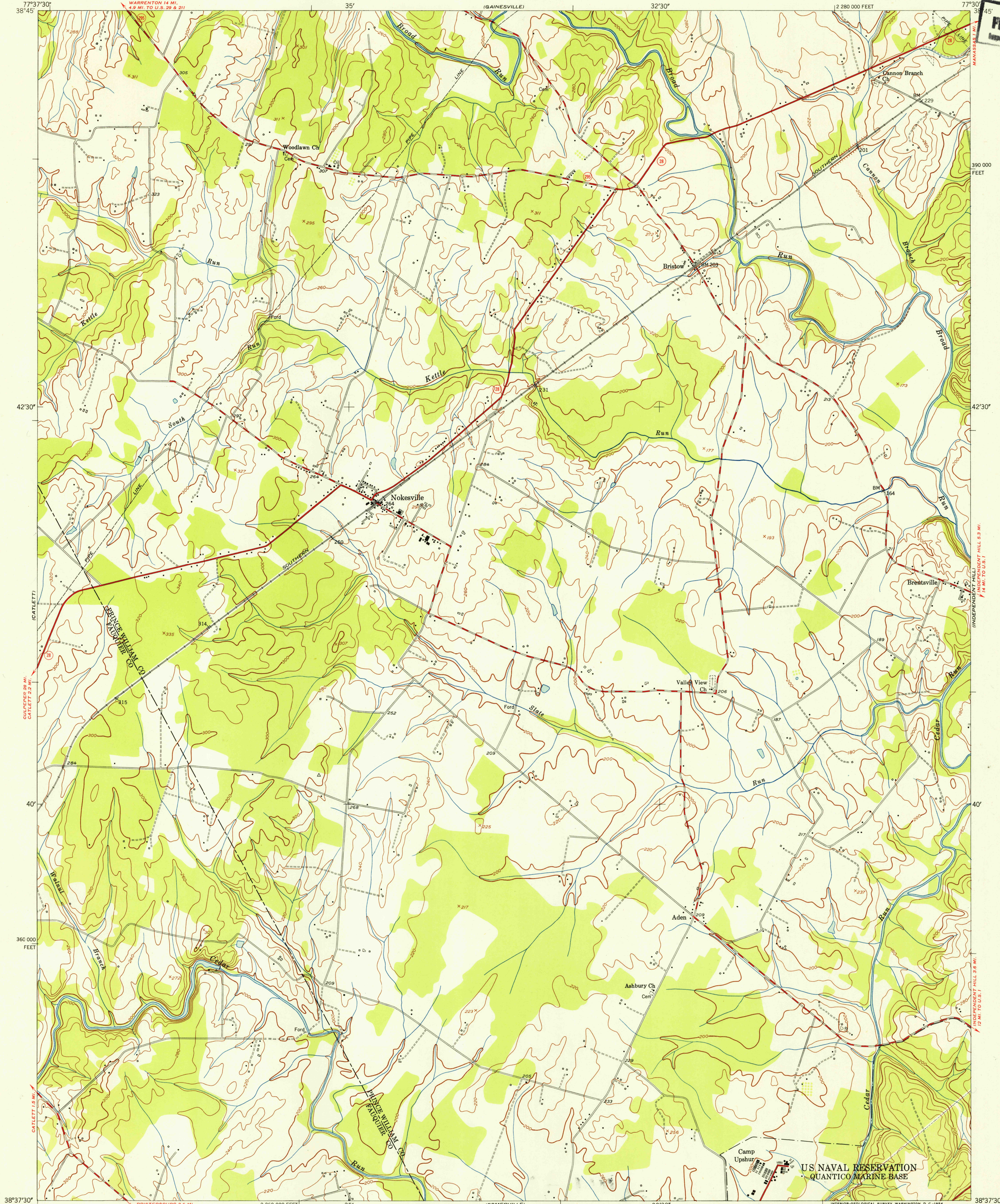
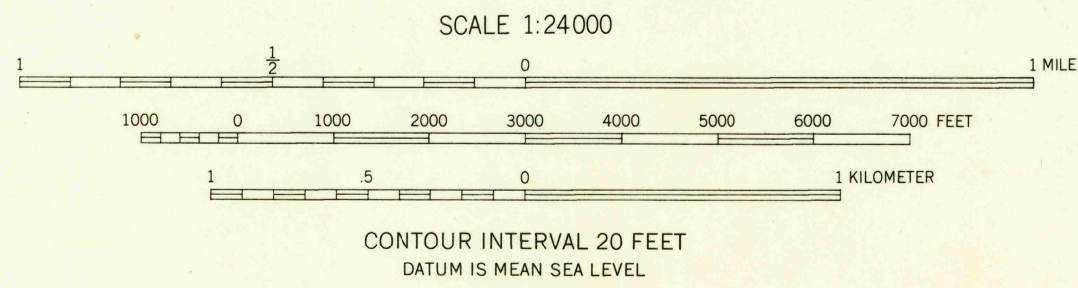


FILE COPY
Inspection and Editing

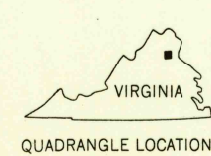


Maped by Corps of Engineers, U.S. Army
Edited and published by the Geological Survey
Control by USGS, USC&GS, and USCE
Topography from aerial photographs by multiplex methods
Aerial photographs taken 1943
Culture revised by the Geological Survey 1953
Polyconic projection. 1927 North American datum
10,000-foot grid based on Virginia coordinate system,
north zone

TRUE NORTH
MAGNETIC NORTH
APPROXIMATE MEAN
DECLINATION, 1953



ROAD CLASSIFICATION
Heavy-duty 4 LANE 16 LANE Light-duty
Medium-duty 4 LANE 16 LANE Unimproved dirt
U. S. Route State Route



USGS
Historical File
Topographic Division

NOKESVILLE, VA.
NE/4 CATLETT 15' QUADRANGLE
N3837.5-W7730/7.5
1953

FILE COPY
Inspection and Editing

FEB 18 1954