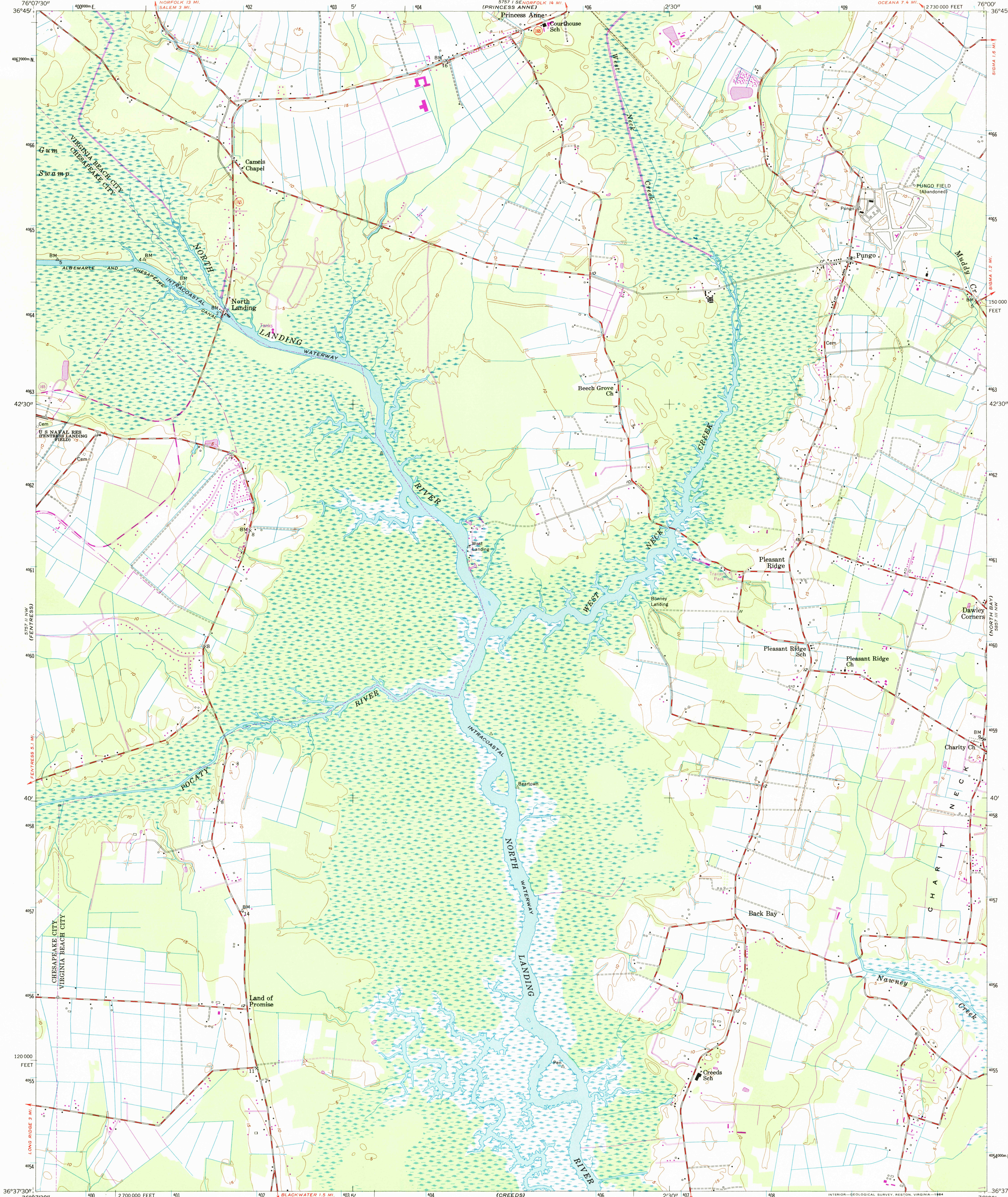


UNITED STATES
DEPARTMENT OF THE INTERIOR
GEOLOGICAL SURVEY

PLEASANT RIDGE QUADRANGLE
VIRGINIA
7.5 MINUTE SERIES (TOPOGRAPHIC)



Mapped, edited, and published by the Geological Survey

Control by USGS, USC&GS, and USCE

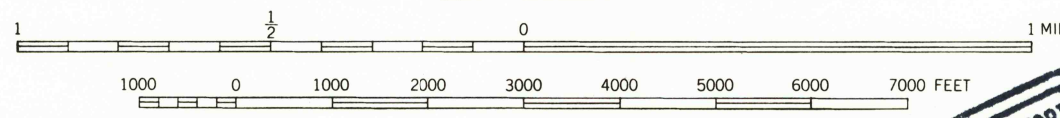
Culture and drainage in part compiled from aerial photographs taken 1953. Topography enlarged from 1:62 500 scale map of Moyock quadrangle, 15-minute series. Original map by planetable surveys 1938-1939. Revised 1954

Polycyclic projection. 1927 North American datum 10,000-foot grid based on Virginia coordinate system, south zone 1000-meter Universal Transverse Mercator grid ticks, zone 18, shown in blue

To place on the predicted North American Datum 1983 move the projection lines 11 meters south and 30 meters west as shown by dashed corner ticks There may be private inholdings within the boundaries of the National or State reservations shown on this map

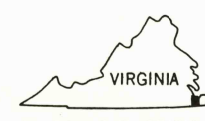
Map photinspected 1981
No major culture or drainage changes observed

SCALE 1:24000



CONTOUR INTERVAL 5 FEET
NATIONAL GEODETIC VERTICAL DATUM OF 1929

THIS MAP COMPLIES WITH NATIONAL MAP ACCURACY STANDARDS
FOR SALE BY U. S. GEOLOGICAL SURVEY, RESTON, VIRGINIA 22092
AND VIRGINIA DIVISION OF MINERAL RESOURCES, CHARLOTTESVILLE, VIRGINIA 22903
A FOLDER DESCRIBING TOPOGRAPHIC MAPS AND SYMBOLS IS AVAILABLE ON REQUEST



ROAD CLASSIFICATION
Heavy-duty ——— Light-duty ———
Medium-duty ——— Unimproved dirt ———
U. S. Route ——— State Route ———

PLEASANT RIDGE, VA.

N 3637.5—W 7600/7.5
PHOTOINSPECTED 1981
1954
PHOTOREVISED 1979
DMA 5757 II NE—SERIES V834

