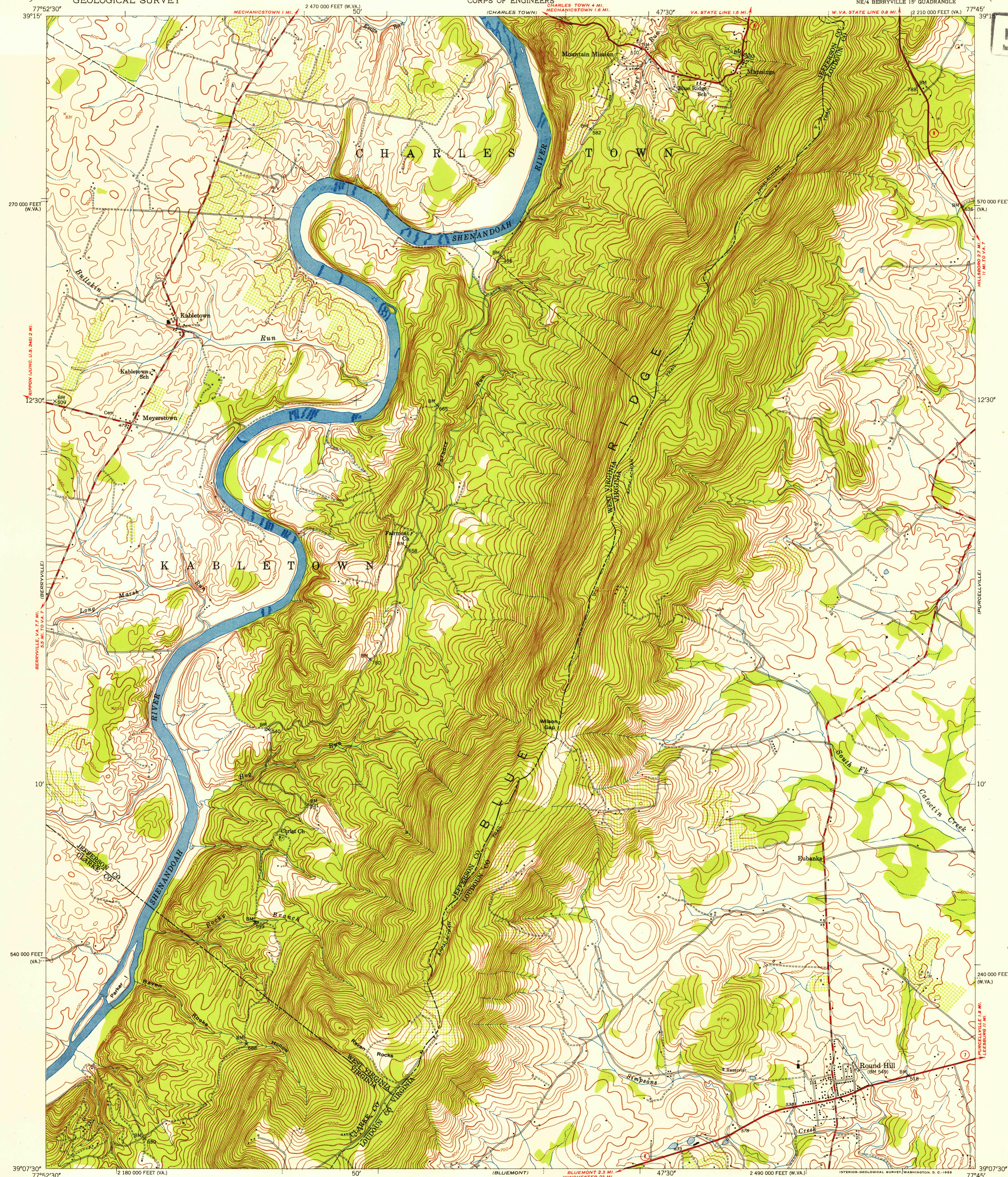
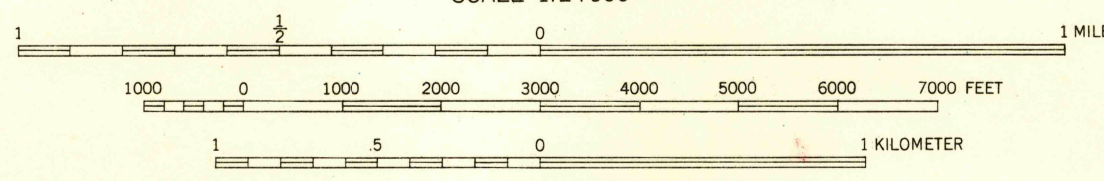


U.S.G.S.  
FILE COPY  
Inspection 100 1-10-53



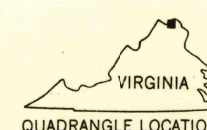
Mapped by Corps of Engineers, U.S. Army  
Edited and published by the Geological Survey  
Control by USGS and USC&GS  
Topography by USSCS 1943  
Revised by the Geological Survey 1953  
Polyconic projection, 1927 North American datum  
10,000-foot grids based on Virginia coordinate system,  
north zone, and West Virginia coordinate system, north zone

TRUE NORTH  
MAGNETIC NORTH  
APPROXIMATE MEAN  
DECLINATION, 1953



SCALE 1:24,000  
CONTOUR INTERVAL 20 FEET  
DATUM IS MEAN SEA LEVEL

USGS  
Historical File  
Topographic Division



ROAD CLASSIFICATION  
Heavy-duty 4 LANE 16 LANE Light-duty  
Medium-duty 4 LANE 16 LANE Unimproved dirt  
U. S. Route State Route

ROUND HILL, VA.-W. VA.  
NE/4 BERRYVILLE 15' QUADRANGLE  
N3907.5-W7745/7.5

U.S.G.S.  
FILE COPY  
Inspection and Editing

1953

DEC 16 1953

2470