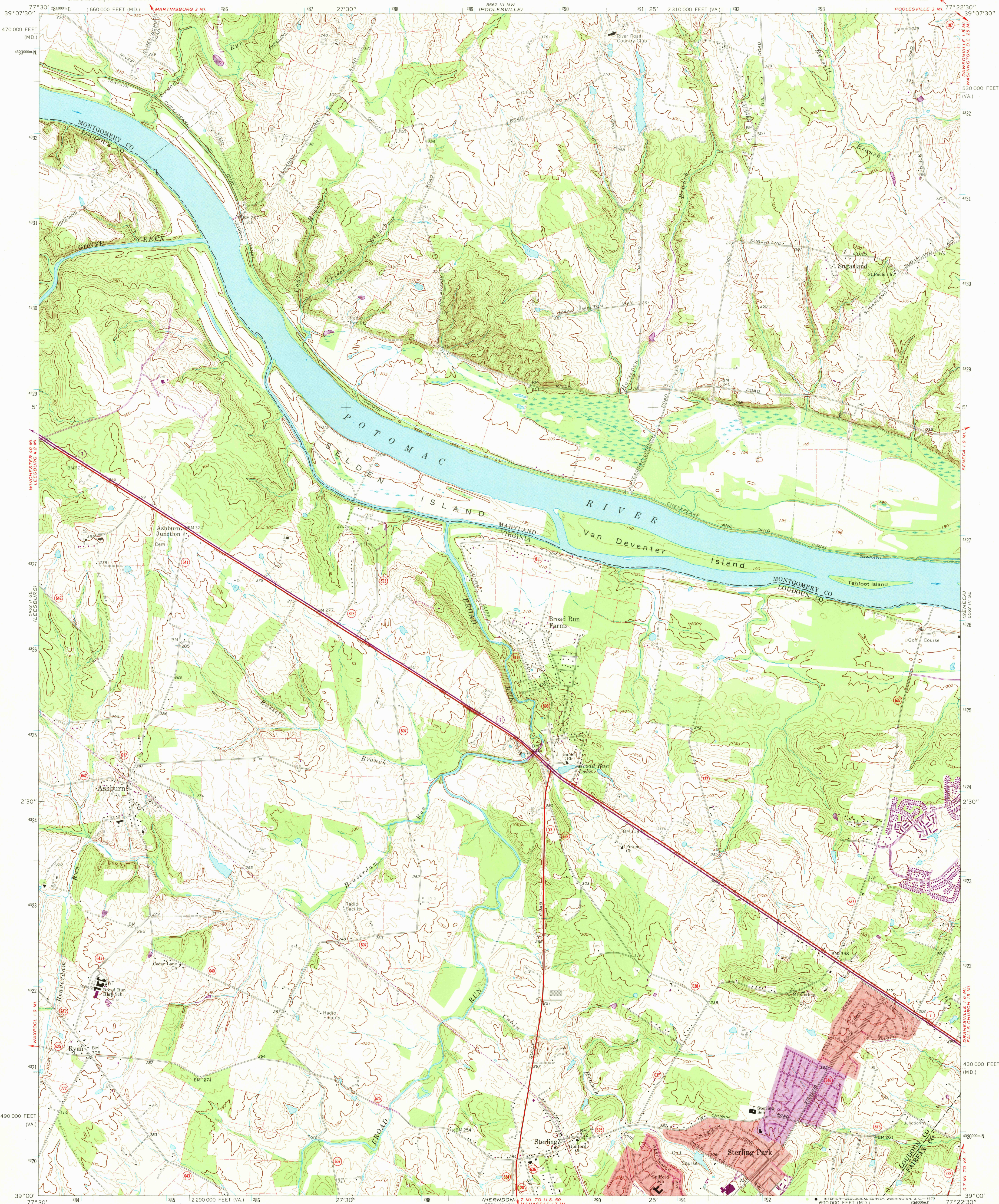
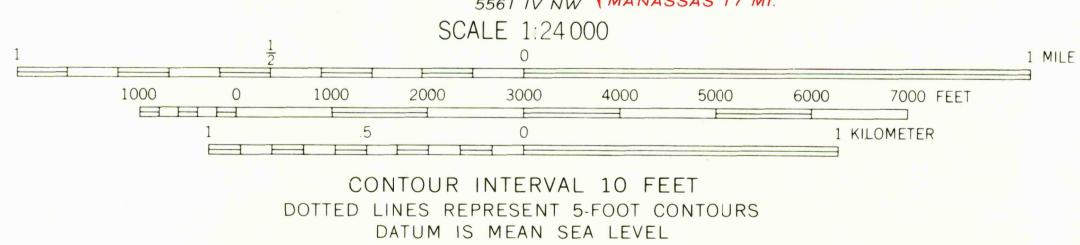
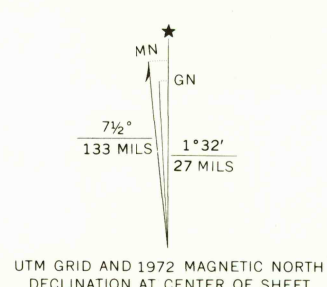


UNITED STATES
DEPARTMENT OF THE INTERIOR
GEOLOGICAL SURVEY

STERLING QUADRANGLE
VIRGINIA-MARYLAND
7.5 MINUTE SERIES (TOPOGRAPHIC)
SW 1/4 SENECA 15' QUADRANGLE

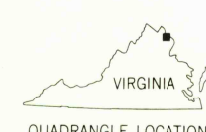


Mapped, edited, and published by the Geological Survey
Control by USGS, USCGS, and USCE
Topography by photogrammetric methods from aerial photographs
taken 1963. Field checked 1968
Supersedes Army Map Service map dated 1952
Polyconic projection. 1927 North American datum
10,000-foot grids based on Virginia coordinate system,
north zone, and Maryland coordinate system
1000-meter Universal Transverse Mercator grid ticks,
zone 18, shown in blue
Fine red dashed lines indicate selected fence and field lines where
generally visible on aerial photographs. This information is unchecked
Red tint indicates areas in which only landmark buildings are shown



THIS MAP COMPLIES WITH NATIONAL MAP ACCURACY STANDARDS
FOR SALE BY U.S. GEOLOGICAL SURVEY, WASHINGTON, D.C. 20242
AND VIRGINIA DIVISION OF MINERAL RESOURCES, CHARLOTTESVILLE, VIRGINIA 22903
A FOLDER DESCRIBING TOPOGRAPHIC MAPS AND SYMBOLS IS AVAILABLE ON REQUEST

ROAD CLASSIFICATION
Primary highway, all weather, hard surface
Secondary highway, all weather, hard surface
Light-duty road, all weather, improved surface
Unimproved road, fair or dry weather
State Route



STERLING, VA.—MD.
SW 1/4 SENECA 15' QUADRANGLE
N3900—W7722.5/7.5
1968
PHOTOREVISED 1972
AMS 5562 III SW—SERIES V834

Revisions shown in purple compiled in cooperation with
Commonwealth of Virginia agencies from aerial photographs
taken 1972. This information not field checked
Purple tint indicates extension of urban areas

5630