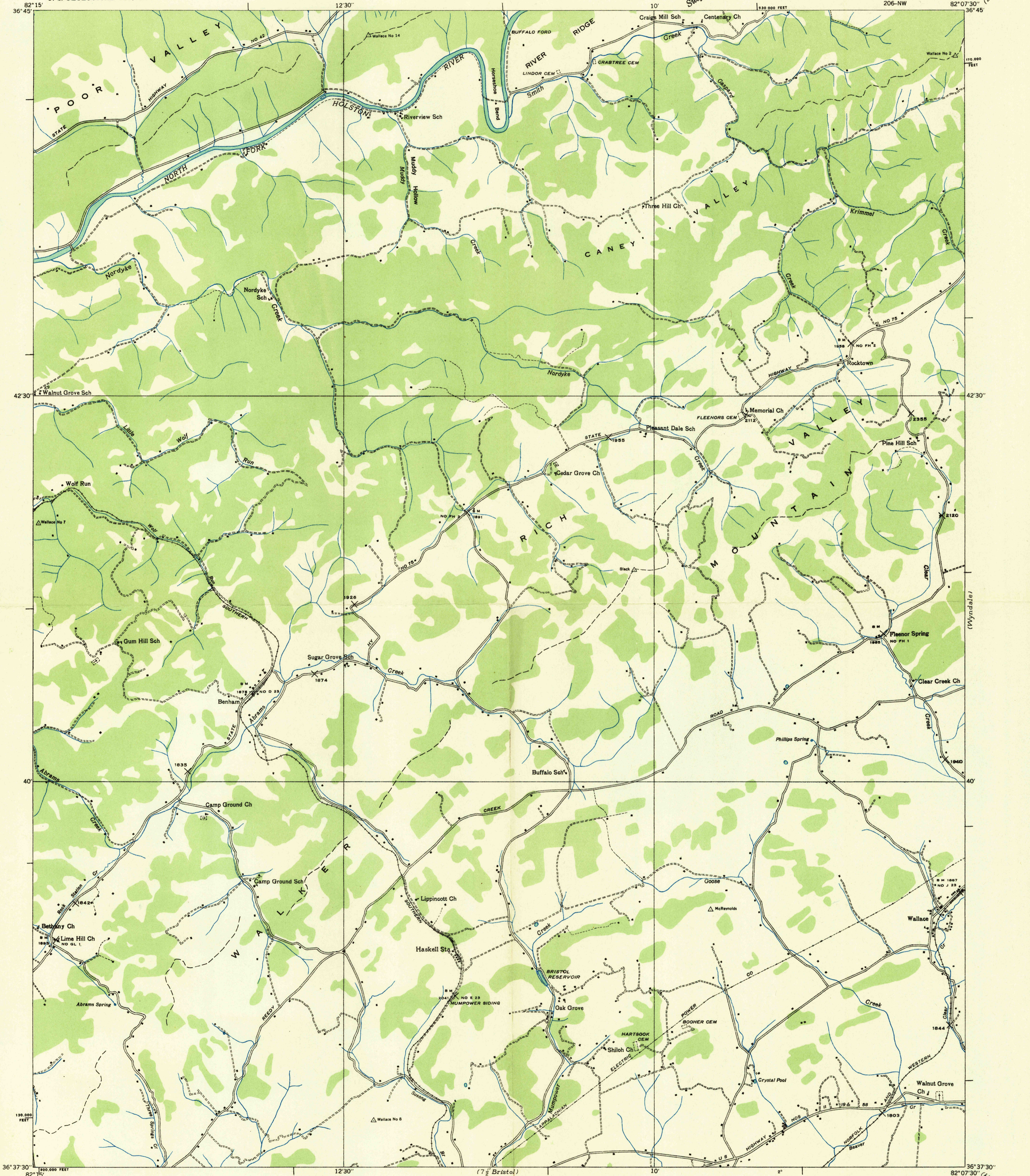
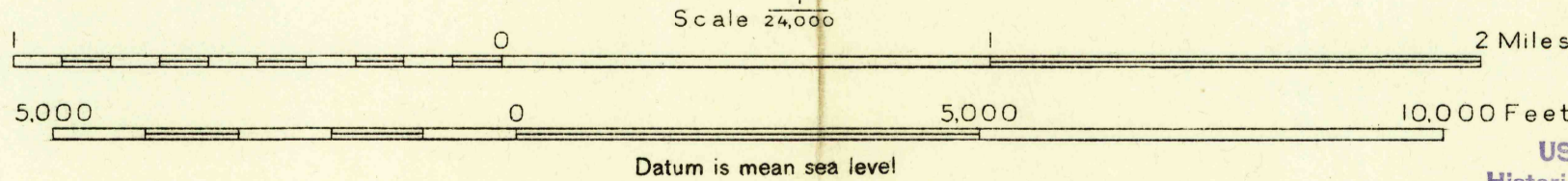


Advance sheet.  
Subject to correction.



Albert Pike, Division Engineer  
Compiled by U. S. Geological Survey from aerial photographs  
Control by U. S. Geological Survey and U. S. Coast and Geodetic Survey  
Field examination in 1934



USGS  
Historical File  
Topographic Division  
APPROXIMATE MEAN  
DECLINATION, 1934

Polyconic projection. 1927 North American datum  
10,000 foot grid based on Virginia  
rectangular coordinate system

Ridge line  
Trail  
Sink  
WALLACE, VA.  
206-NW