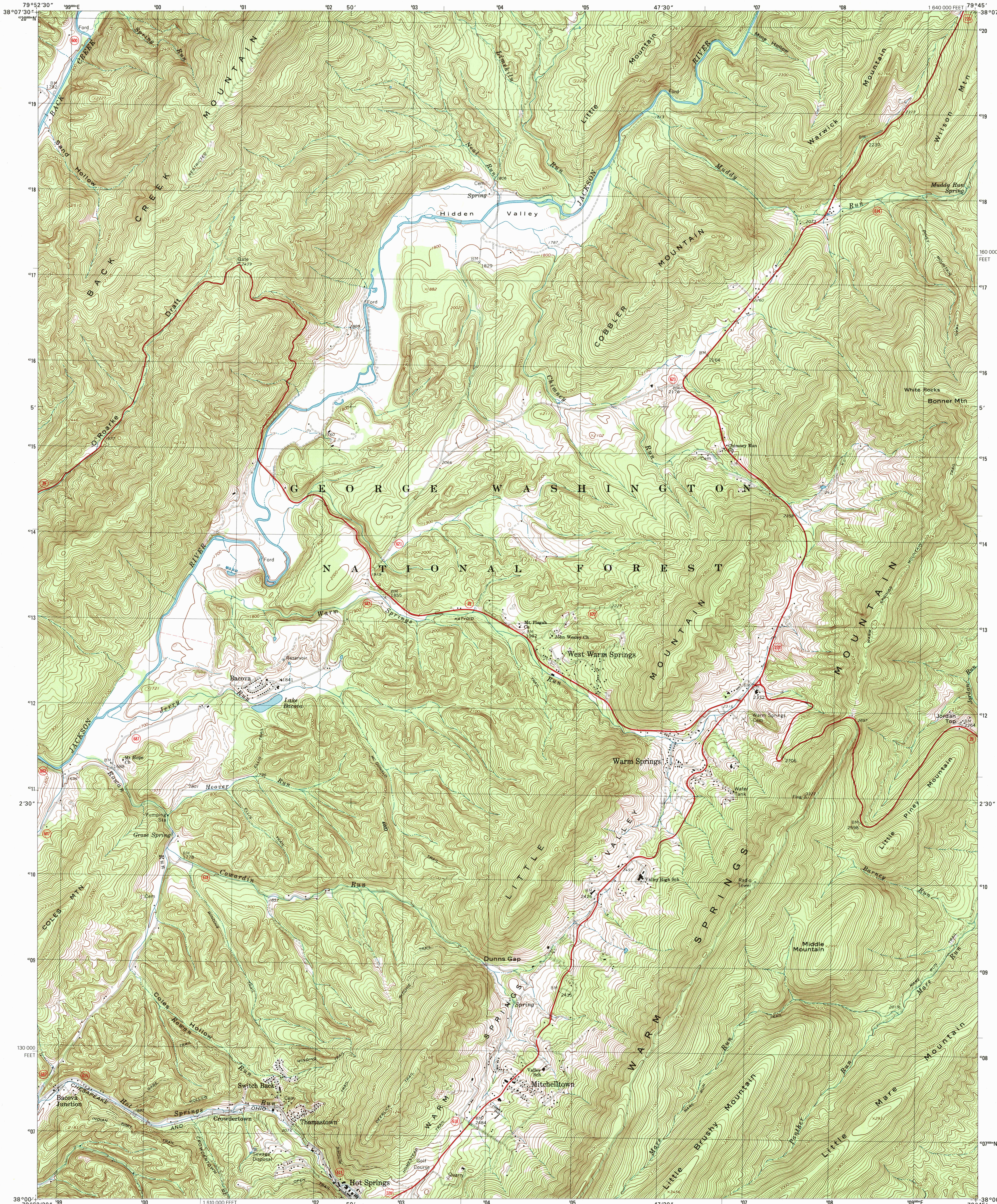




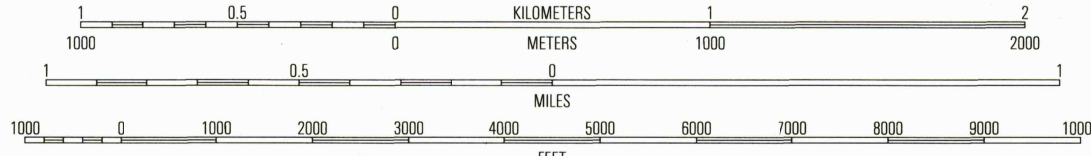
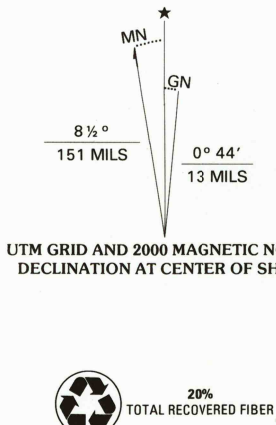
U.S. DEPARTMENT OF THE INTERIOR
U.S. GEOLOGICAL SURVEY

COMMONWEALTH OF VIRGINIA
DEPARTMENT OF TRANSPORTATION
DEPARTMENT OF MINES, MINERALS, AND ENERGY

WARM SPRINGS QUADRANGLE
VIRGINIA-BATH CO.
7.5-MINUTE SERIES (TOPOGRAPHIC)



Produced by the United States Geological Survey
Derived from imagery taken 1966 and other sources. Photosinspected using imagery taken 1999; no major culture or drainage changes observed. Survey control current as of 1968
Boundaries verified 2000
North American Datum of 1927 (NAD 27). Projection and 10 000-foot ticks: Virginia coordinate system, north zone (Lambert conformal conic)
1000-meter Universal Transverse Mercator grid, zone 17
North American Datum of 1983 (NAD 83) is shown by dashed corner ticks. The values of the shift between NAD 27 and NAD 83 for 7.5-minute intersections are obtainable from National Geodetic Survey NADCON software
There may be private inholdings within the boundaries of the National or State reservations shown on this map



CONTOUR INTERVAL 20 FEET
NATIONAL GEODETIC VERTICAL DATUM OF 1929
TO CONVERT FROM FEET TO METERS, MULTIPLY BY 0.3048

THIS MAP COMPLIES WITH NATIONAL MAP ACCURACY STANDARDS
FOR SALE BY U.S. GEOLOGICAL SURVEY, P.O. BOX 25286, DENVER, COLORADO 80225
AND VIRGINIA DIVISION OF MINERAL RESOURCES, CHARLOTTESVILLE, VIRGINIA 22903
A FOLDER DESCRIBING TOPOGRAPHIC MAPS AND SYMBOLS IS AVAILABLE ON REQUEST



1	2	3
4	5	6
7	8	9

ROAD CLASSIFICATION
Primary highway hard surface
Secondary highway hard surface
Unimproved road
Interstate Route U.S. Route State Route

WARM SPRINGS, VA
1999

NIMA 5060 III SE-SERIES V834

RECEIVED

SEP 30 2000

USGS AND
HISTORICAL MAP ARCHIVES

