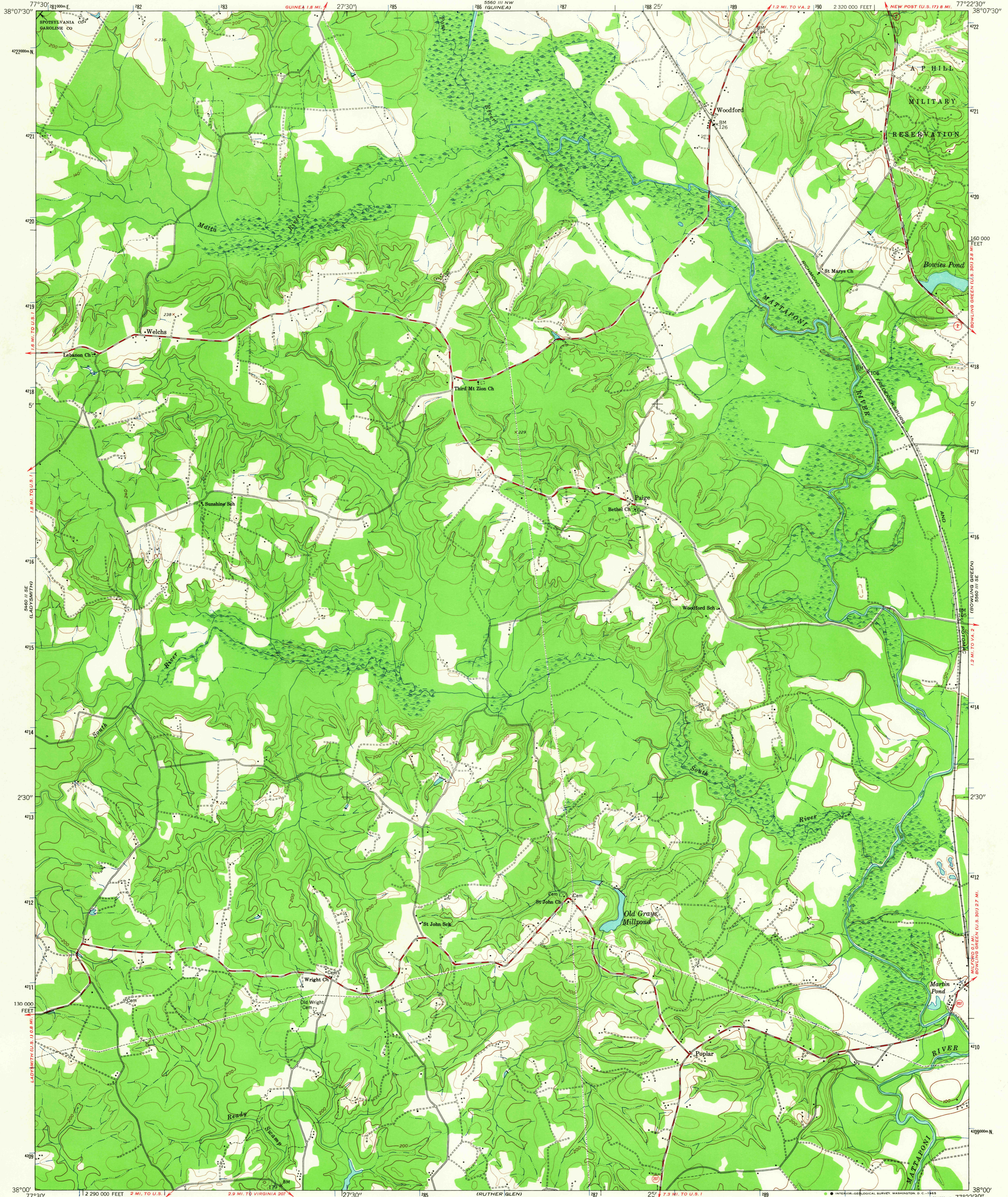


UNITED STATES
DEPARTMENT OF THE INTERIOR
GEOLOGICAL SURVEY

WOODFORD QUADRANGLE
VIRGINIA
7.5 MINUTE SERIES (TOPOGRAPHIC)

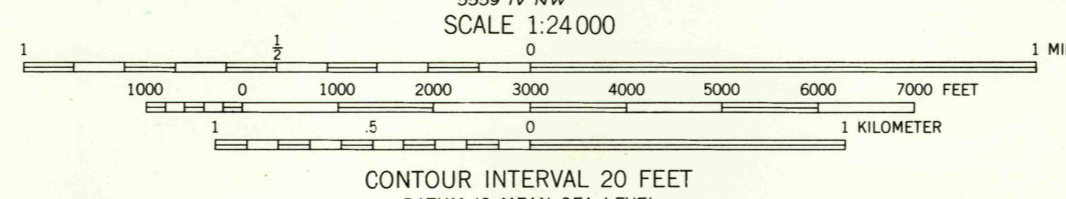
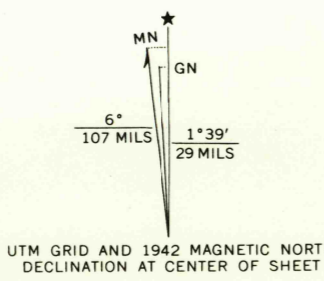


Mapped by the Army Map Service
Published for civil use by the Geological Survey

Control by USGS, USC&GS, and SCS

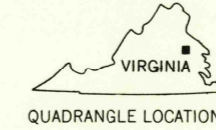
Topography from aerial photographs by photogrammetric methods
and by planetable surveys 1942. Aerial photographs taken 1942
Planimetric detail revised from aerial photographs
taken 1947. Field check 1949

Polyconic projection. 1927 North American datum
10,000-foot grid based on Virginia coordinate system, north zone
1000-meter Universal Transverse Mercator grid ticks,
zone 18, shown in blue



CONTOUR INTERVAL 20 FEET
DATUM IS MEAN SEA LEVEL

ROAD CLASSIFICATION
Medium-duty ——— Light-duty ———
Unimproved dirt ———
State Route ○



U.S.G.S.
FILE COPY
TOPOGRAPHIC DIVISION

WOODFORD, VA.
N3800-W7722.5/7.5

1942

AMS 5560 III SW-SERIES V834

FOR SALE BY U.S. GEOLOGICAL SURVEY, WASHINGTON, D.C. 20242
A FOLDER DESCRIBING TOPOGRAPHIC MAPS AND SYMBOLS IS AVAILABLE ON REQUEST

OCT 1 4 1965

7185