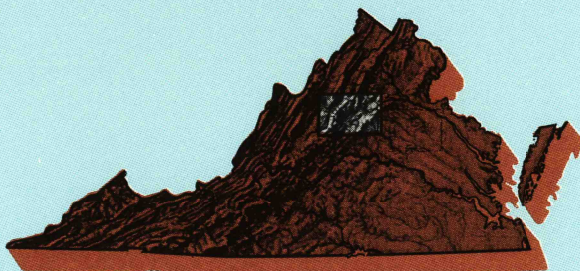


Charlottesville  
VIRGINIA

1:100 000-scale metric  
topographic map



30 X 60 MINUTE QUADRANGLE  
SHOWING

- Contours and elevations in meters
- Highways, roads and other manmade structures
- Water features
- Woodland areas
- Geographic names



GEOLOGICAL SURVEY

1986

Produced by the United States Geological Survey

Compiled from USGS 1:24 000-scale topographic maps dated 1965-1979. Planimetry revised from aerial photographs taken 1984 and other source data. Revised information not field checked. Map edited 1986.

Projection and 10 000-meter grid, zone 17. Universal Transverse Mercator. 25 000-foot grid ticks based on Virginia coordinate system, north and south zones. 1927 North American Datum. To place on the predicted North American Datum 1983 move the projection lines 9 meters south and 23 meters west. There may be private inholdings within the boundaries of the National or State reservations shown on this map.

CONTOUR INTERVAL 20 METERS  
NATIONAL GEODETIC VERTICAL DATUM OF 1929  
ELEVATIONS SHOWN TO THE NEAREST METER

THIS MAP COMPLIES WITH NATIONAL MAP ACCURACY STANDARDS

FOR SALE BY U.S. GEOLOGICAL SURVEY  
P.O. BOX 25286, DENVER, COLORADO 80225

CONVERSION TABLE		DECLINATION DIAGRAM		ADJOINING MAPS			
Meters	Feet	Meters		1	2	3	4
1	3.2808	142 MILS		1	2	3	4
2	6.5617	132 MILS		5	6	7	8
3	9.8425	122 MILS					
4	13.1234	112 MILS					
5	16.4042	102 MILS					
6	19.6850	92 MILS					
7	22.9659	82 MILS					
8	26.2467	72 MILS					
9	29.5275	62 MILS					
10	32.8084	52 MILS					

To convert meters to feet multiply by 3.2808  
To convert feet to meters multiply by 0.3048

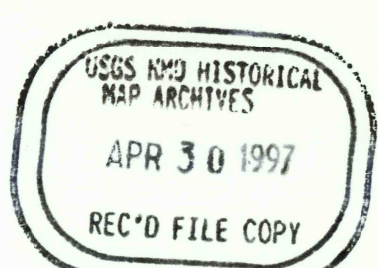
UTM grid convergence (GM and 1983 magnetic declination (MM) at center of map. Diagram is approximate.

1 Elkins  
2 Front Royal  
3 Washington West  
4 Staunton  
5 Shenandoah  
6 Dumfries  
7 Culpeper  
8 Richmond

ISBN 0-607-56663-9



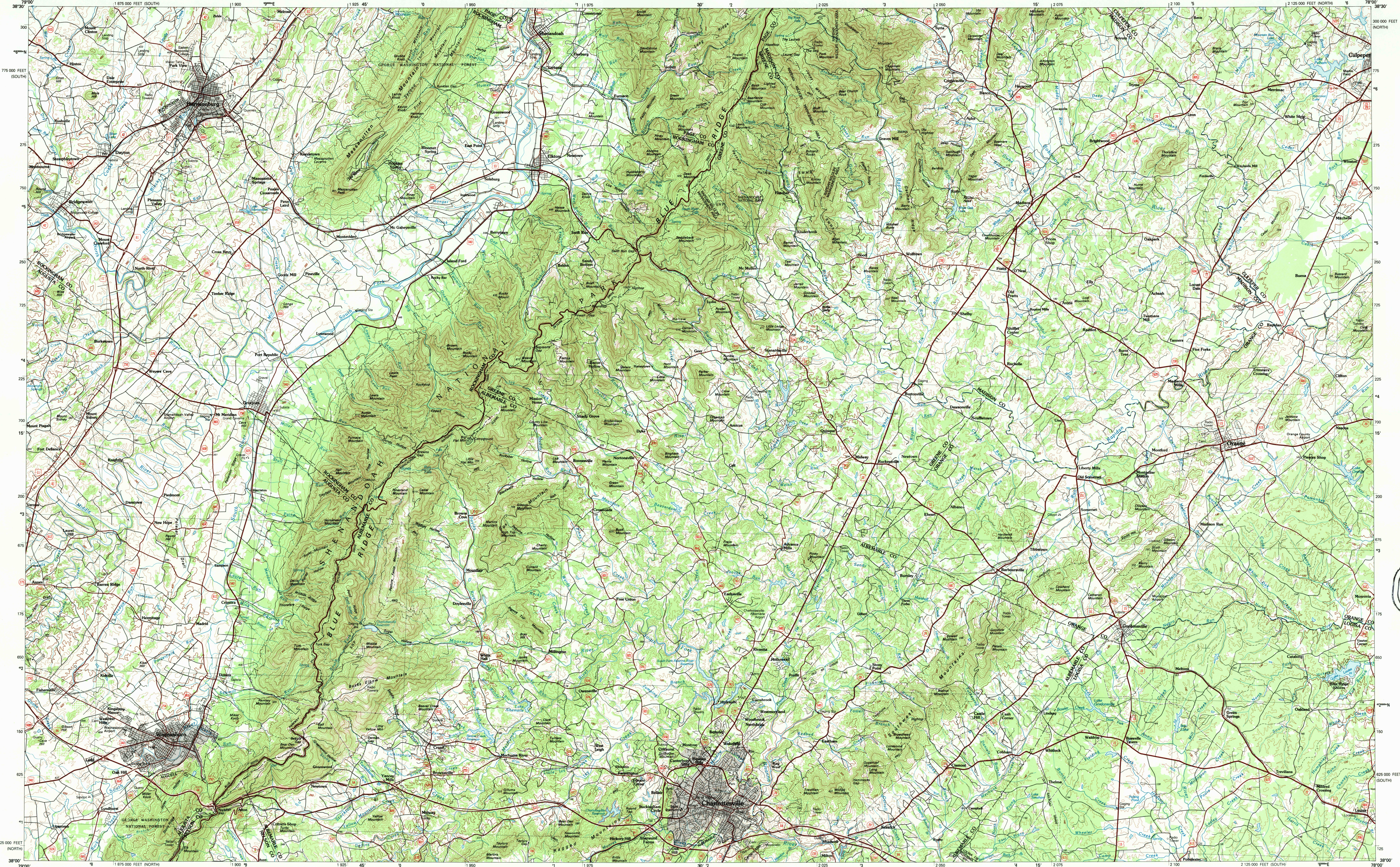
9 780607 566635



Topographic Map Symbols

Primary highway, hard surface	Secondary highway, hard surface	Light duty road, principal street, hard or improved surface	Other road or street; trail	Route marker: Interstate; U. S.; State	Railroad: standard gauge; narrow gauge	Bridge, overpass, underpass	Tunnel: road; railroad	Built up area; locality; elevation	Airport: landing field; landing strip	State boundary	National or State reservation boundary	Land grant boundary	U. S. public lands survey; range, township; section	Range, township; section line; protracted	Power transmission line; pipeline	Dam; dam with lock	Cemetery; building	Wetland; water well; spring	Mine shaft; adit or cave; mine, quarry; gravel pit	Campground; picnic area; U. S. location monument	Railroad; cliff dwelling	Distorted surface: strip mine, lava, sand	Contours: index; intermediate; supplementary	Bathymetric contours: index; intermediate	Stream, lake; perennial; intermittent	Swamp, large and small; lake, large and small	Area to be submerged; marsh, swamp	Land subject to controlled inundation; woodland	Scrub; mangrove	Orchard; vineyard
-------------------------------	---------------------------------	-------------------------------------------------------------	-----------------------------	----------------------------------------	----------------------------------------	-----------------------------	------------------------	------------------------------------	---------------------------------------	----------------	----------------------------------------	---------------------	-----------------------------------------------------	-------------------------------------------	-----------------------------------	--------------------	--------------------	-----------------------------	----------------------------------------------------	--------------------------------------------------	--------------------------	-------------------------------------------	----------------------------------------------	-------------------------------------------	---------------------------------------	-----------------------------------------------	------------------------------------	-------------------------------------------------	-----------------	-------------------

A pamphlet describing topographic maps is available on request



SCALE 1:100 000

1 CENTIMETER ON THE MAP REPRESENTS 1 KILOMETER ON THE GROUND  
CONTOUR INTERVAL 20 METERS

CHARLOTTESVILLE, VIRGINIA

38078-A1-TM-100

1986