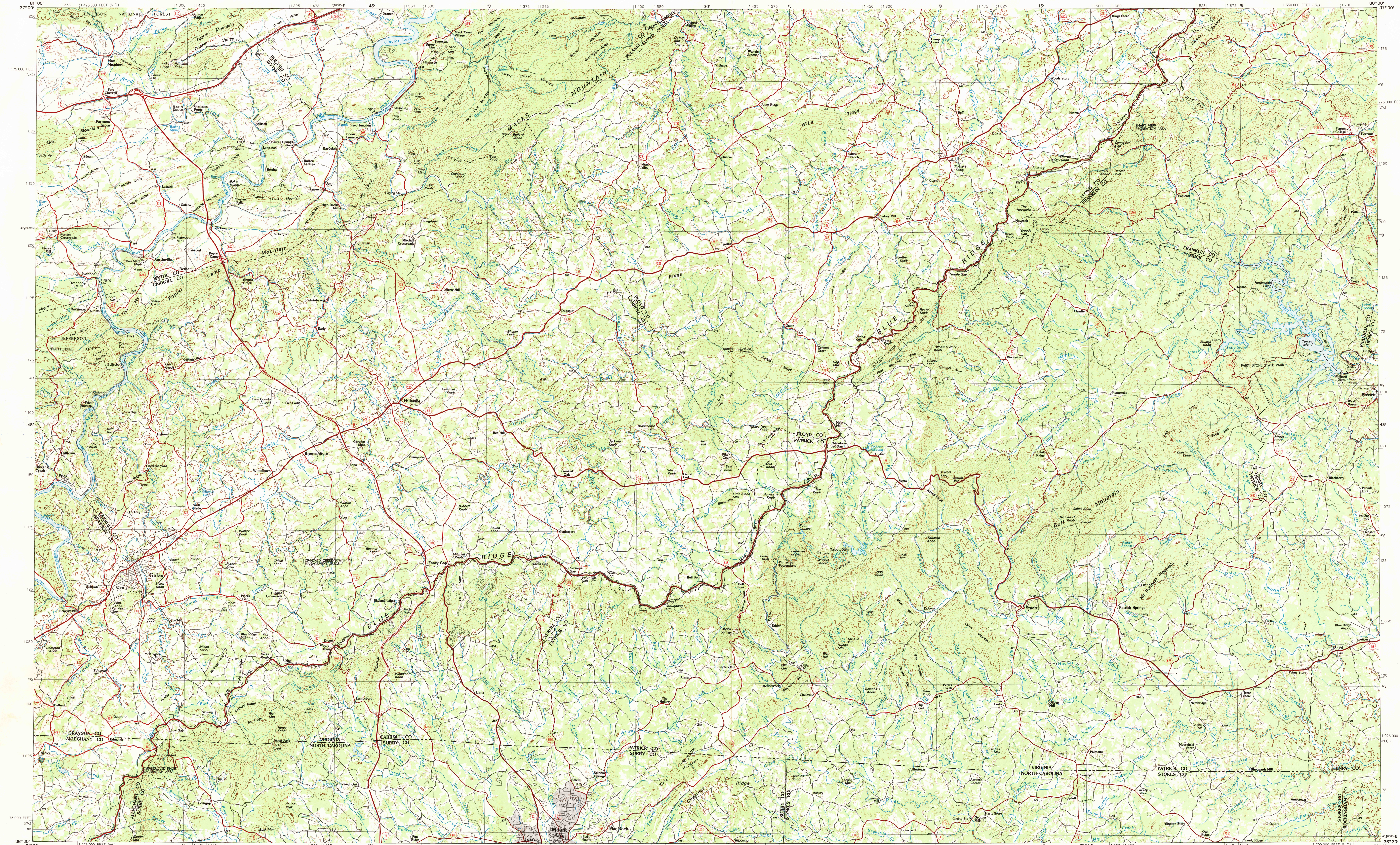


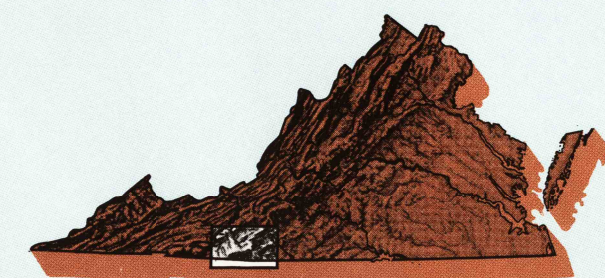
GALAX, VIRGINIA-NORTH CAROLINA

30 X 60 MINUTE SERIES (TOPOGRAPHIC)



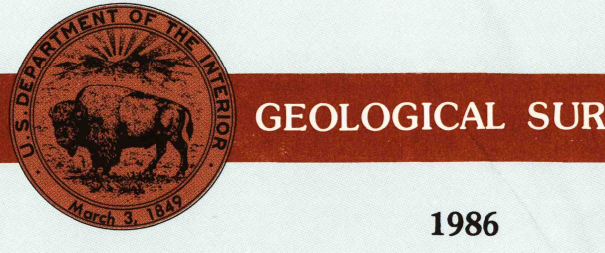
Galax
VIRGINIA-NORTH CAROLINA

1:100 000-scale metric
topographic map



30 X 60 MINUTE QUADRANGLE
SHOWING

- Contours and elevations in meters
- Highways, roads and other manmade structures
- Water features
- Woodland areas
- Geographic names

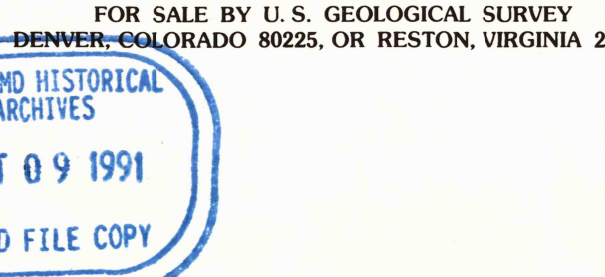


Produced by the United States Geological Survey
Compiled from USGS 1:24 000-scale topographic maps dated 1965-1978. Planimetry revised from aerial photographs taken 1982 and other source data. Revised information not field checked. Map edited 1986
Projection and 10 000-meter grid, zone 17, Universal Transverse Mercator
25 000-foot grid ticks based on Virginia coordinate system, south zone and North Carolina coordinate system 1927 North American Datum
To place on the predicted North American Datum 1983, move the projection lines 9 meters south and 18 meters west
There may be private inholdings within the boundaries of the National or State reservations shown on this map

CONTOUR INTERVAL 50 METERS
NATIONAL GEODETIC VERTICAL DATUM OF 1929
ELEVATIONS SHOWN TO THE NEAREST METER

THIS MAP COMPLIES WITH NATIONAL MAP ACCURACY STANDARDS

CONVERSION TABLE		DECLINATION DIAGRAM	ADJOINING MAPS	
Meters	Feet		1	2
1	3.2808			
2	6.5617			
3	9.8425			
4	13.1234			
5	16.4042			
6	19.6850			
7	22.9659			
8	26.2467			
9	29.5275			
10	32.8084			
To convert meters to feet multiply by 3.2808		UTM grid convergence (00N and 1981 magnetic declination (M)) at center of map Diagram is approximate		
To convert feet to meters multiply by 0.3048		1 Bluefield 2 Radford 3 Roanoke 4 Wytheville 5 Danville 6 Boone 7 Winston-Salem 8 Greensboro		



Topographic Map Symbols

- Primary highway, hard surface
- Secondary highway, hard surface
- Light duty road, principal street, hard or improved surface
- Other road or street, paved
- Railroad: standard gage, narrow gage
- Bridge: overpass; underpass
- Tunnel: road; railroad
- Built up areas, locality, elevation
- Airport: landing field; landing strip
- National boundary
- State boundary
- County boundary
- National or State reservation boundary
- Low grade lands survey: range, township, section
- U.S. public lands survey: range, township, section
- Range, township, section line: protracted
- Power transmission line; pipeline
- Dam; dam with lock
- Cemetery; building
- Wells: water well; spring
- Mine shaft; adit or cave; mine; quarry; gravel pit
- Campground; picnic area; U.S. location monument
- Ruin; cliff dwelling
- Distorted surface: strip mine, lava, sand
- Contours: index; intermediate; supplementary
- Bathymetric contours: index; intermediate
- Stream, lake: perennial; intermittent
- Rapids, large and small; falls, large and small
- Area to be submerged; marsh; swamp
- Land subject to controlled inundation; woodland
- Scrub; mangrove
- Orchard; vineyard

A pamphlet describing topographic maps is available on request

• INTERIOR—GEOLOGICAL SURVEY, RESTON, VIRGINIA—1981



GALAX, VIRGINIA-NORTH CAROLINA
36080-E1-TM-100