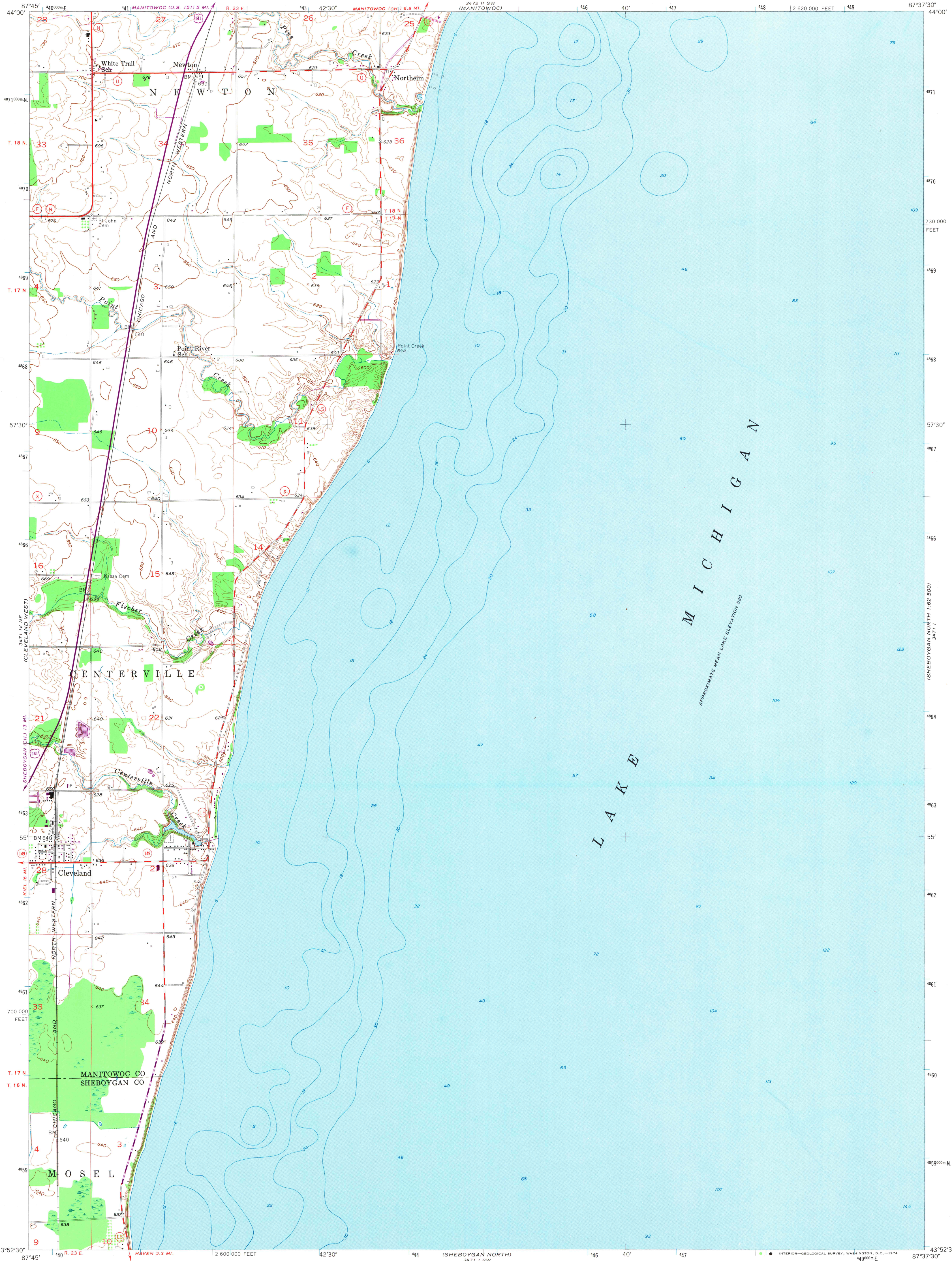


UNITED STATES
DEPARTMENT OF THE INTERIOR
GEOLOGICAL SURVEY

CLEVELAND EAST QUADRANGLE
WISCONSIN
7.5 MINUTE SERIES (TOPOGRAPHIC)
NW 1/4 SHEBOYGAN NORTH 15' QUADRANGLE
2 620 000 FEET

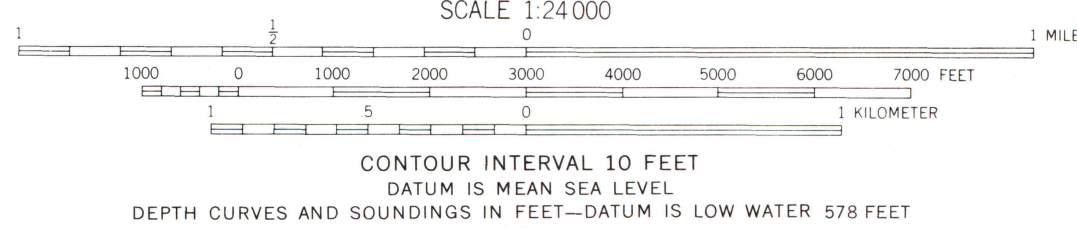
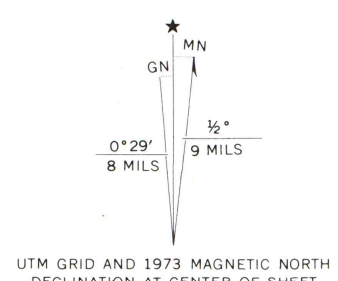


Maped, edited, and published by the Geological Survey
Control by USGS, USC&GS, and U.S. Lake Survey

Topography from aerial photographs by Kelsh plotter
Aerial photographs taken 1951-1952. Field check 1954
Hydrography from U.S. Lake Survey Chart 73 (1:120 000)
Polyconic projection. 1927 North American datum
10,000-foot grid based on Wisconsin coordinate system,
south zone

1000-meter Universal Transverse Mercator grid ticks,
zone 16, shown in blue

Revisions shown in purple compiled from aerial photographs
taken 1973. This information not field checked



THIS MAP COMPLIES WITH NATIONAL MAP ACCURACY STANDARDS
FOR SALE BY U.S. GEOLOGICAL SURVEY, WASHINGTON, D. C. 20242
AND BY THE WISCONSIN GEOLOGICAL AND NATURAL HISTORY SURVEY, MADISON, WISCONSIN 53706
A FOLDER DESCRIBING TOPOGRAPHIC MAPS AND SYMBOLS IS AVAILABLE ON REQUEST



ROAD CLASSIFICATION			
Heavy-duty	Light-duty	Unimproved dirt	
Medium-duty			
U. S. Route	State Route		

CLEVELAND EAST, WIS.
(FORMERLY CLEVELAND)
NW 1/4 SHEBOYGAN NORTH 15' QUADRANGLE
N4352.5-W8737.5/7.5

1954
PHOTOREVISED 1973
AMS 3471.1 NW-SERIES V861

MAP AND AIR PHOTO
LIBRARY

MAR 18 1974

University of Wisconsin

1973
copy
1-1