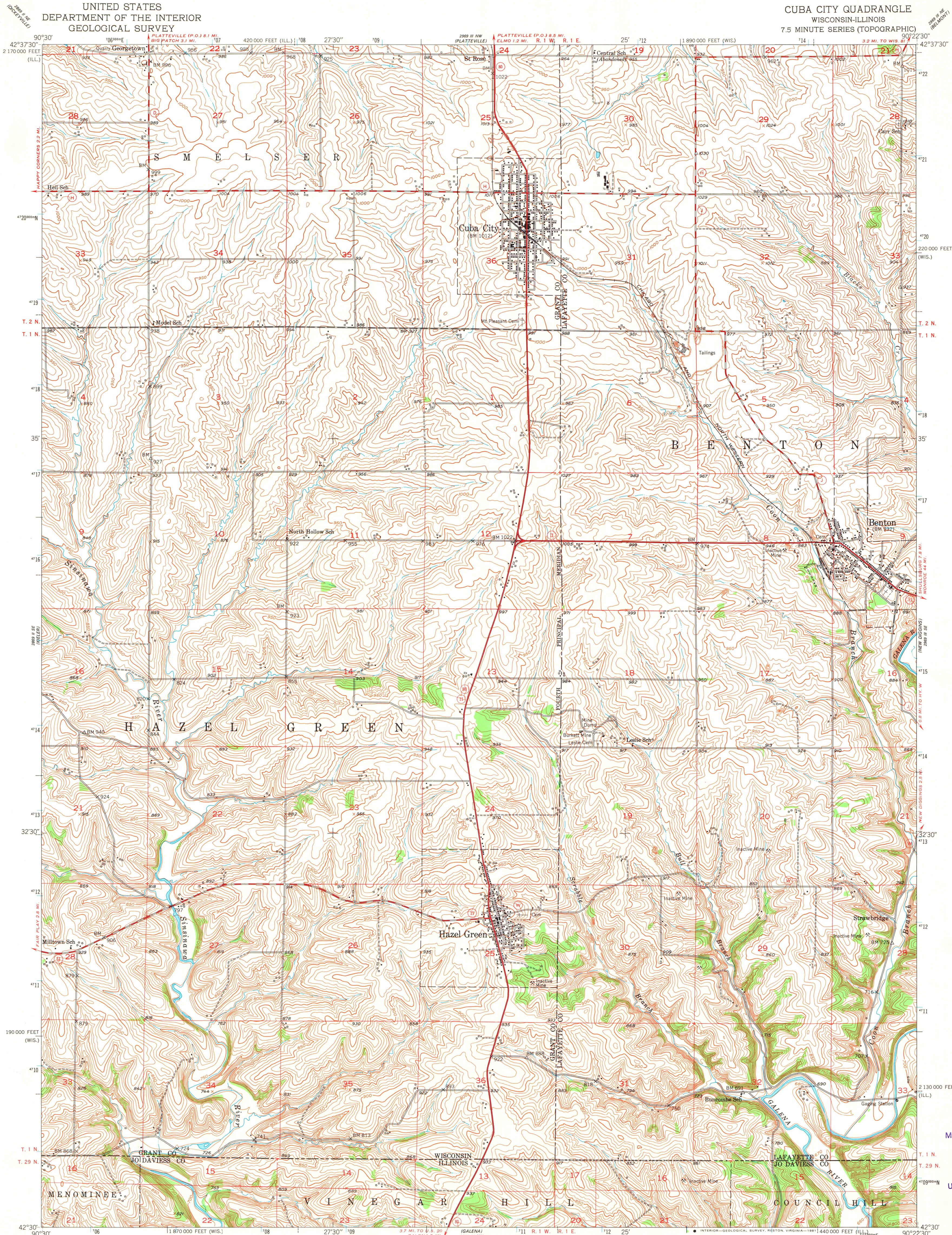


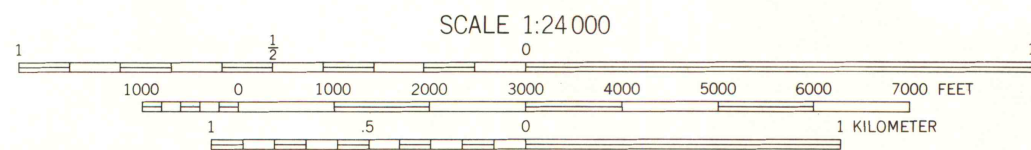
UNITED STATES
DEPARTMENT OF THE INTERIOR
GEOLOGICAL SURVEY

CUBA CITY QUADRANGLE
WISCONSIN-ILLINOIS
7.5 MINUTE SERIES (TOPOGRAPHIC)



Mapped, edited, and published by the Geological Survey
Control by USGS and USC&GS
Topography from aerial photographs by multiplex methods
Aerial photographs taken 1951. Field check 1952
Polyconic projection. 1927 North American datum
10,000-foot grids based on Wisconsin coordinate system,
south zone, and on Illinois coordinate system, west zone
To place on the predicted North American Datum 1983
move the projection lines 4 meters north and
11 meters east as shown by dashed corner ticks
Map photoinspected 1978
No major culture or drainage changes observed

UTM GRID AND 1952 MAGNETIC NORTH
DECLINATION AT CENTER OF SHEET



CONTOUR INTERVAL 10 FEET
NATIONAL GEODETIC VERTICAL DATUM OF 1929
THIS MAP COMPLIES WITH NATIONAL MAP ACCURACY STANDARDS
FOR SALE BY U. S. GEOLOGICAL SURVEY, RESTON, VIRGINIA 22092
WISCONSIN GEOLOGICAL AND NATURAL HISTORY SURVEY, MADISON, WISCONSIN 53706,
AND STATE GEOLOGICAL SURVEY, URBANA, ILLINOIS 61801
A FOLDER DESCRIBING TOPOGRAPHIC MAPS AND SYMBOLS IS AVAILABLE ON REQUEST



ROAD CLASSIFICATION
Heavy-duty 4 LANE 16 LANE Light-duty
Medium-duty 4 LANE 16 LANE Unimproved dirt
U. S. Route State Route

CUBA CITY, WIS.-ILL.
N4230-W9022.5/7.5

1952
PHOTOINSPECTED 1978
DMA 2969 III SW-SERIES V861

MAP AND AIR PHOTO
LIBRARY
JUN 15 1981
University of Wisconsin
Madison

1978
copy
1-1
X