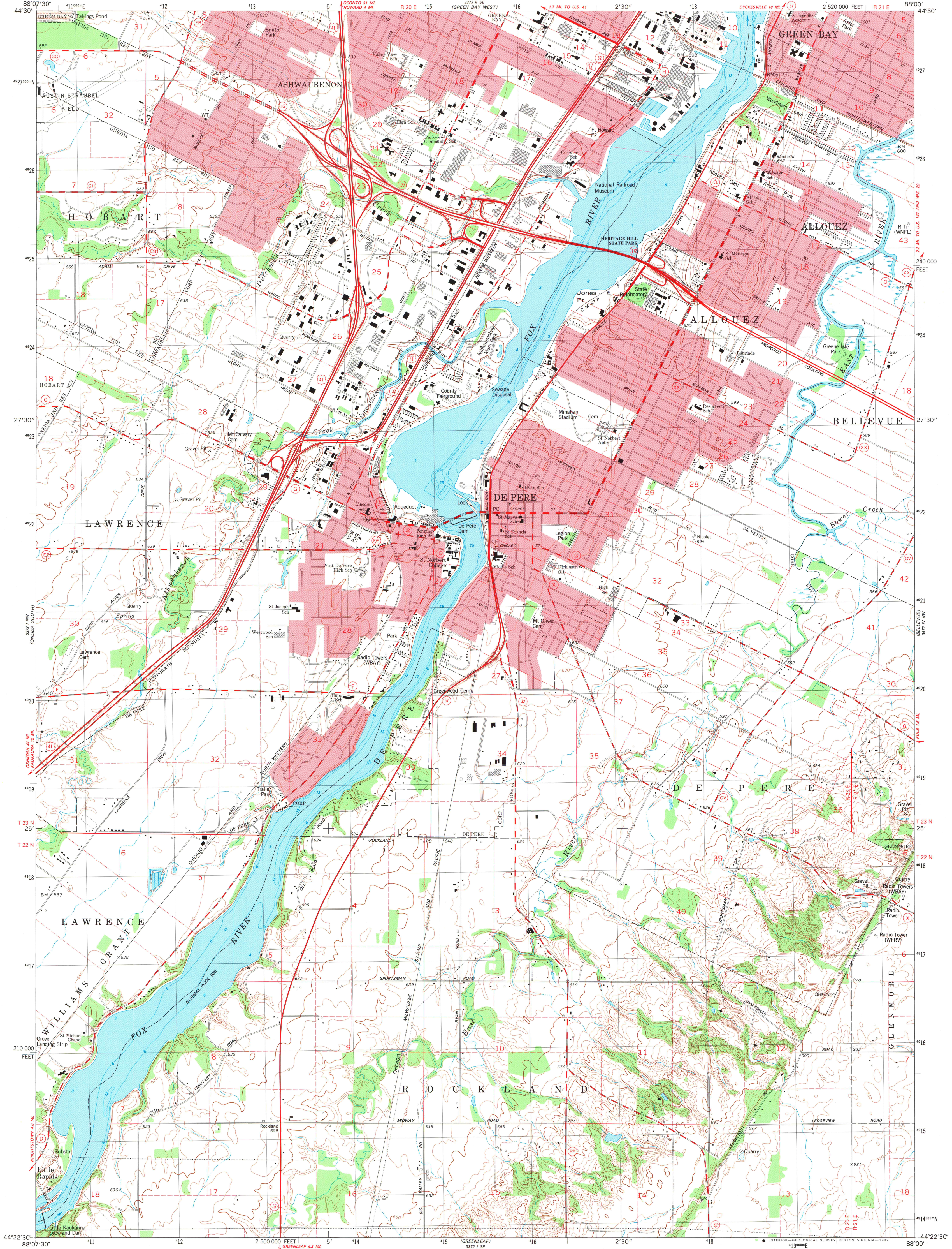


UNITED STATES  
DEPARTMENT OF THE INTERIOR  
GEOLOGICAL SURVEY

DE PERE QUADRANGLE  
WISCONSIN-BROWN CO.  
7.5 MINUTE SERIES (TOPOGRAPHIC)  
NE 4 DE PERE 15' QUADRANGLE



Maped, edited, and published by the Geological Survey  
Control by USGS and NOS/NOAA  
Topography by photogrammetric methods from aerial photographs taken  
1951 and planimetric surveys 1952 and 1954. Revised from aerial  
photographs taken 1978-79. Field checked 1981. Map edited 1982  
Selected hydrographic data compiled from NOS charts 14916 (1979) and  
14918 (1979). This information is not intended for navigational purposes  
Projection and 10,000-foot grid ticks: Wisconsin coordinate  
system, central zone (Lambert conformal conic)  
1000-meter Universal Transverse Mercator grid, zone 16  
1927 North American Datum  
To place on the predicted North American Datum 1983  
move the projection lines 5 meters north and  
7 meters east as shown by dashed corner ticks  
There may be private inholdings within the boundaries of  
the National or State reservations shown on this map  
Red tint indicates areas in which only landmark buildings are shown  
Fine red dashed lines indicate selected fence and field lines where  
generally visible on aerial photographs. This information is unchecked

SCALE 1:24 000  
1 000 0 1000 2000 3000 4000 5000 6000 7000 FEET  
1 0 1 KILOMETER  
CONTOUR INTERVAL 10 FEET  
NATIONAL GEODETIC VERTICAL DATUM OF 1929  
DEPTH CURVES AND SOUNDINGS IN FEET DATUM IS LOW WATER 576.8 FEET  
BELOW DE PERE DAM AND NORMAL POOL LEVELS ABOVE DE PERE DAM

ROAD CLASSIFICATION  
Primary highway, hard surface  
Secondary highway, hard surface  
Unimproved road  
Interstate Route  
U. S. Route  
State Route  
Light-duty road, hard or improved surface  
Unimproved road  
Interstate Route  
U. S. Route  
State Route

DE PERE, WIS.  
NE 4 DE PERE 15' QUADRANGLE  
N4422.5-W8800/7.5  
1982  
DMA 3372 I NE-SERIES V861  
MAP AND AIR PHOTO LIBRARY  
FEB 03 1983  
University of Wisconsin  
Madison

1982  
copy  
1-1