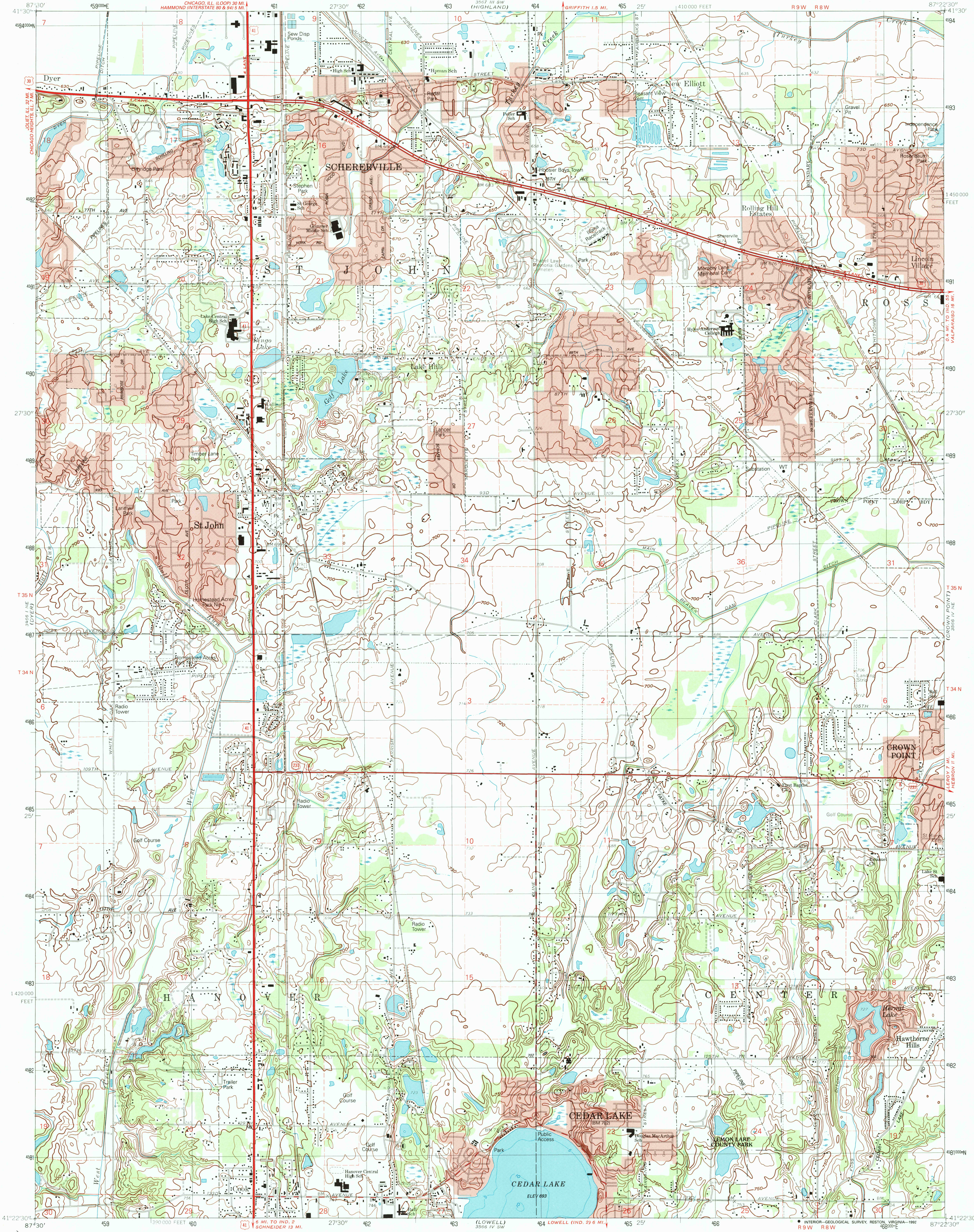
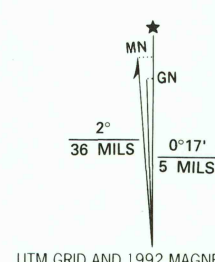


UNITED STATES
DEPARTMENT OF THE INTERIOR
GEOLOGICAL SURVEY

ST. JOHN QUADRANGLE
INDIANA-LAKE CO.
7.5 MINUTE SERIES (TOPOGRAPHIC)



Produced by the United States Geological Survey
Control by USGS and NOS/NOAA
Planimetry by photogrammetric methods from aerial photographs taken
1952. Topography by planimetric surveys 1953. Revised from aerial
photographs taken 1987. Field checked 1991. Map edited 1992
Depth curves compiled from USGS-Indiana
Department of Conservation lake charts
Projection and 10,000-foot grid ticks: Indiana coordinate
system, west zone (transverse Mercator)
1000-meter Universal Transverse Mercator grid, zone 16
1927 North American Datum
The difference between 1927 North American Datum and North
American Datum of 1983 (NAD 83) for 7.5-minute intersections
is given in USGS Bulletin 1875. The NAD 83 is shown by
dashed corner ticks
Red tint indicates areas in which only landmark buildings are shown
Fine red dashed lines indicate selected fence and field lines where
generally visible on aerial photographs. This information is unchecked



SCALE 1:24,000
CONTOUR INTERVAL 10 FEET
NATIONAL GEODETIC VERTICAL DATUM OF 1929

COMPLIES WITH U.S. GEOLOGICAL SURVEY STANDARDS FOR SPATIAL ACCURACY-CLASS 2
FOR SALE BY U.S. GEOLOGICAL SURVEY, DENVER, COLORADO 80225, OR RESTON, VIRGINIA 22092
AND INDIANA DEPARTMENT OF NATURAL RESOURCES, INDIANAPOLIS, INDIANA 46204
A FOLDER DESCRIBING TOPOGRAPHIC MAPS AND SYMBOLS IS AVAILABLE ON REQUEST

ROAD CLASSIFICATION
Primary highway, hard surface
Secondary highway, hard surface
Light-duty road, hard or improved surface
Unimproved road
Interstate Route
U.S. Route
State Route



ST. JOHN, IND.
41087-04-TF-024
1992

DMA 3566 IV NW-SERIES V851

