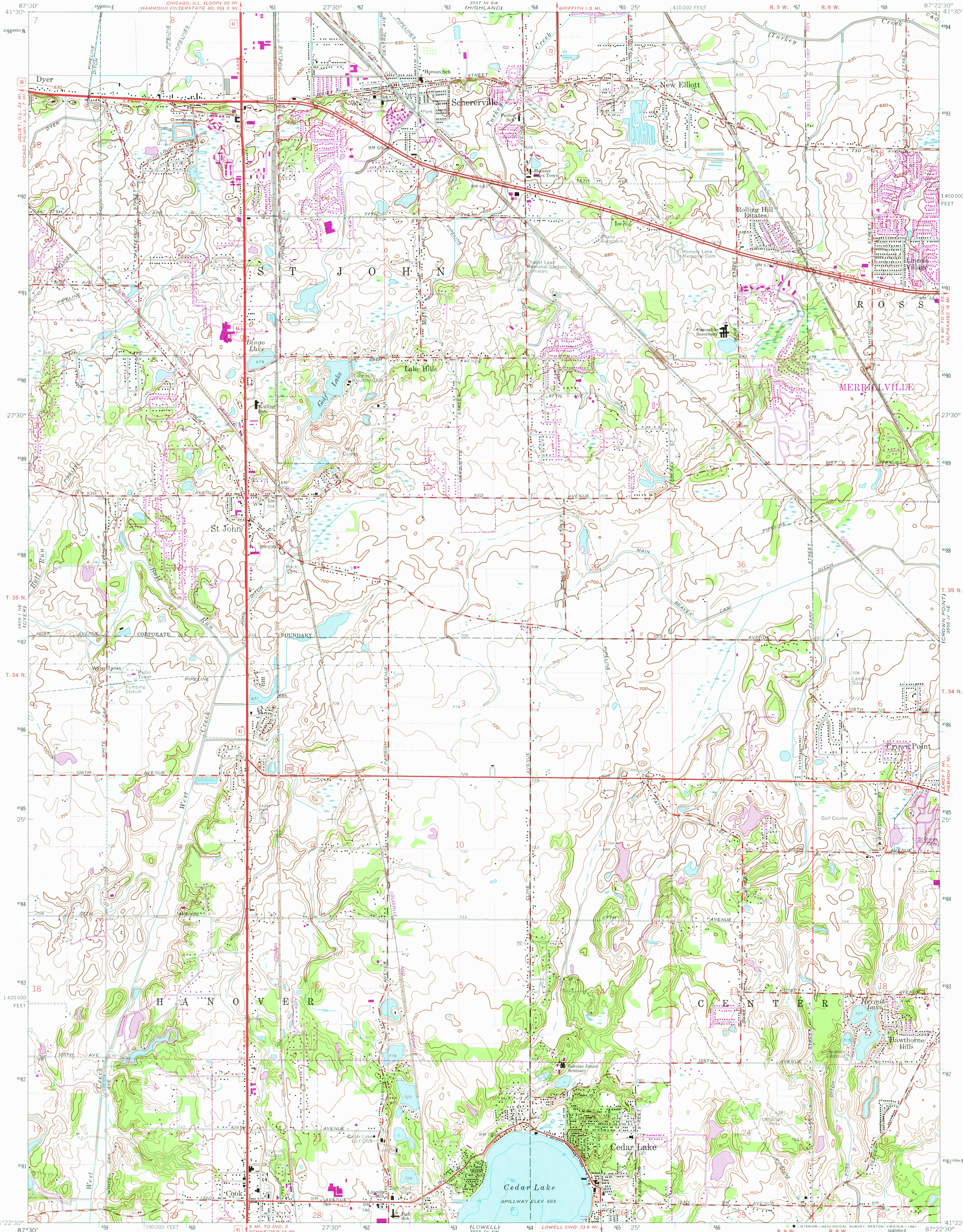
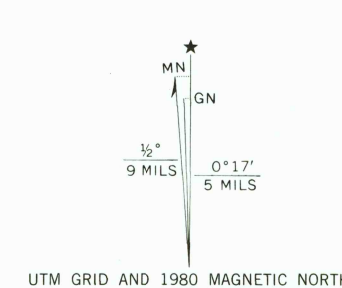


UNITED STATES
DEPARTMENT OF THE INTERIOR
GEOLOGICAL SURVEY

ST. JOHN QUADRANGLE
INDIANA—LAKE CO.
7.5 MINUTE SERIES (TOPOGRAPHIC)



Mapped, edited, and published by the Geological Survey
Revised in cooperation with State of Indiana Department
of Conservation
Control by USGS and NOS/NOAA
Planimetry by photogrammetric methods from aerial photographs
taken 1952. Topography by planetable surveys 1953. Revised 1962
Depth curves compiled from USGS—Indiana
Department of Conservation lake charts
Polyconic projection. 10,000-foot grid based on
Indiana coordinate system, west zone
1000-meter Universal Transverse Mercator grid ticks,
zone 16, shown in blue. 1927 North American Datum
To place on the predicted North American Datum 1983
move the projection lines 1 meter north and
4 meters east as shown by dashed corner ticks
Fine red dashed lines indicate selected fence and field lines where
generally visible on aerial photographs. This information is unchecked



SCALE 1:24,000
CONTOUR INTERVAL 10 FEET
NATIONAL GEODETIC VERTICAL DATUM OF 1929

ROAD CLASSIFICATION
Heavy-duty ——— Light-duty ———
Medium-duty ——— Unimproved dirt ———
U.S. Route ——— State Route ———

ST. JOHN, IND.
N4122.5—W8722.5/7.5
1962
PHOTOREVISED 1980
DMA 3566 IV NW—SERIES V851

USGS
Historical File
National Mapping Div.

MAR 12 1981

2250