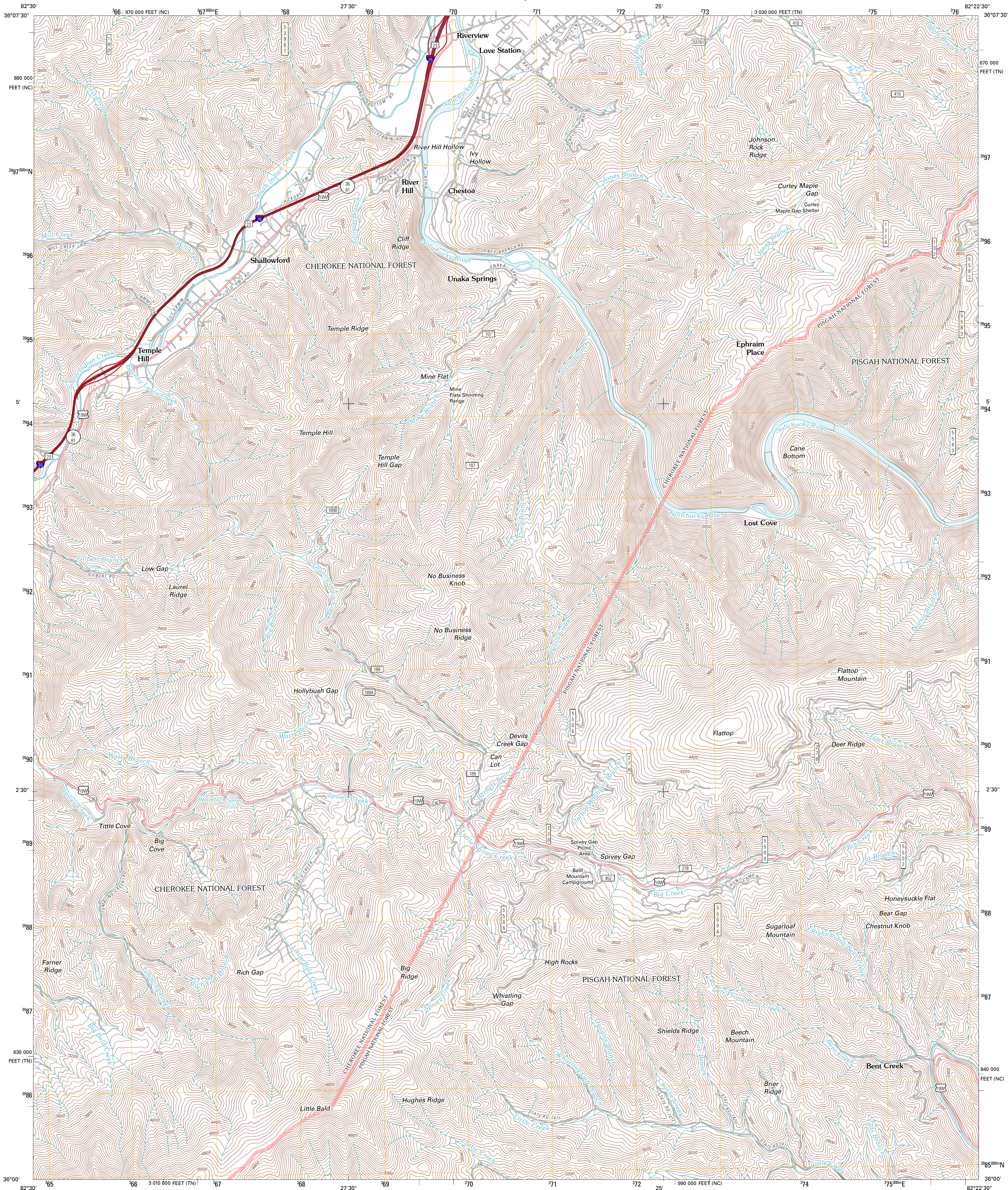




U.S. DEPARTMENT OF THE INTERIOR
U. S. GEOLOGICAL SURVEY

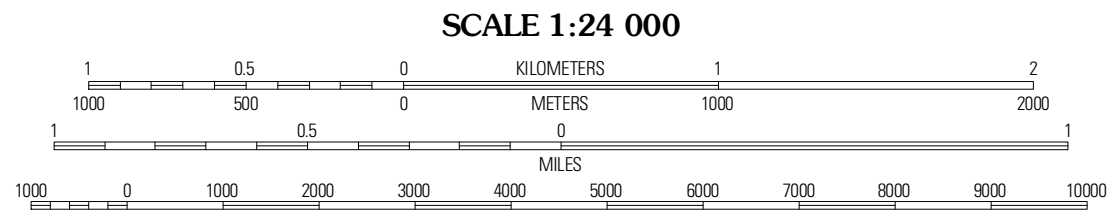
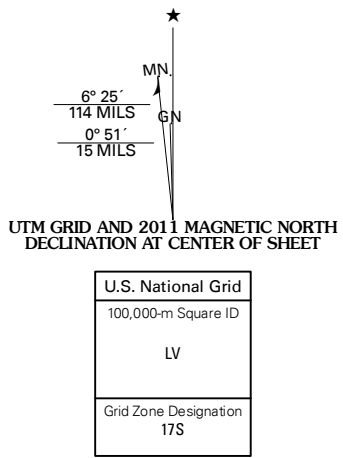


CHESTOA QUADRANGLE
TENNESSEE-NORTH CAROLINA
7.5-MINUTE SERIES

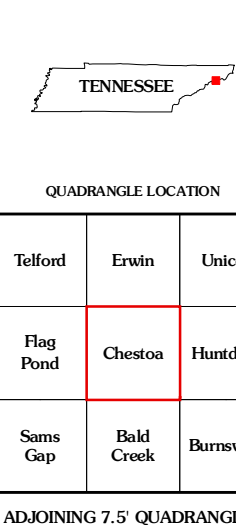


Produced by the United States Geological Survey
North American Datum of 1983 (NAD83)
World Geodetic System of 1984 (WGS84). Projection and
1 000-meter grid: Universal Transverse Mercator, Zone 17S
10 000-foot ticks: Tennessee Coordinate System of 1983,
North Carolina Coordinate System of 1983

Imagery.....NAIP, April 2010
Roads.....©2006-2010 Tele Atlas
Roads within US Forest Service Lands.....FSTopo Data
with limited Forest Service updates, 2009
Names.....CNS, 2010
Hydrography.....National Hydrography Dataset, 2010
Contours.....National Elevation Dataset, 2001



CONTOUR INTERVAL 40 FEET
NORTH AMERICAN VERTICAL DATUM OF 1988
This map was produced to conform with version 0.5.10 of the
draft USGS Standards for 7.5-Minute Quadrangle Maps.
A metadata file associated with this product is draft version 0.5.12



ROAD CLASSIFICATION
Interstate Route
US Route
Ramp
State Route
Local Road
4WD
US Route
FS Passenger Route
FS High Clearance Route
Check with local Forest Service unit
for current travel conditions and restrictions.

CHESTOA, TN-NC
2011