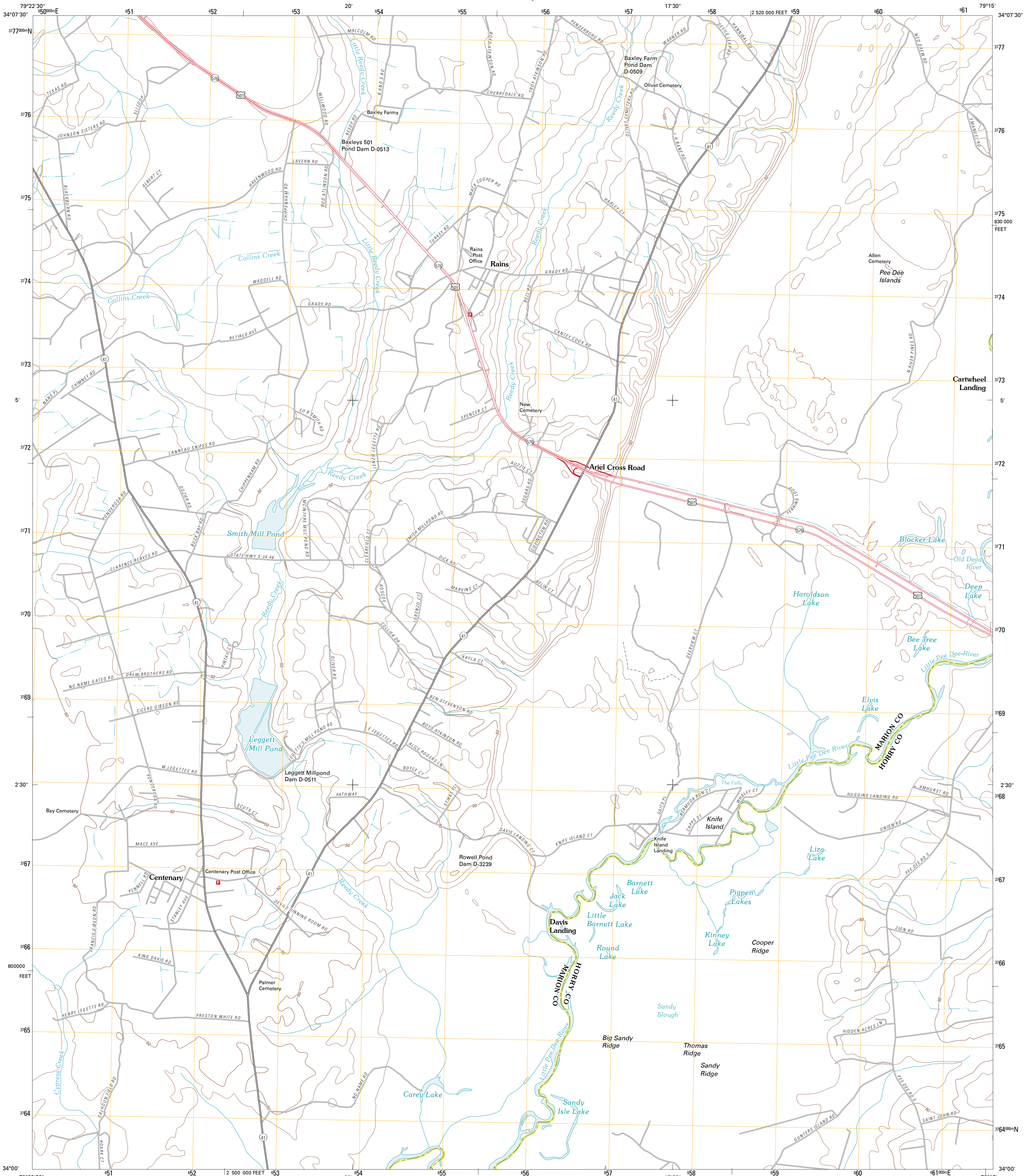




U.S. DEPARTMENT OF THE INTERIOR  
U. S. GEOLOGICAL SURVEY

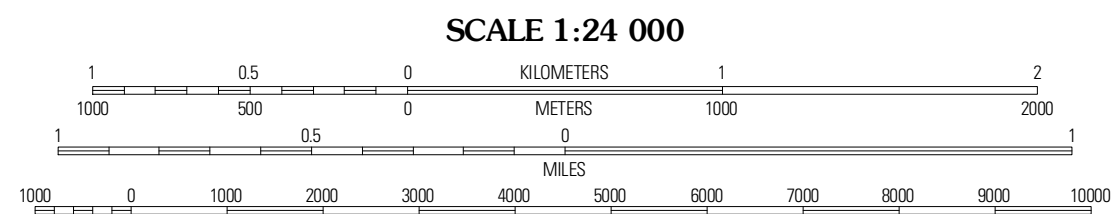
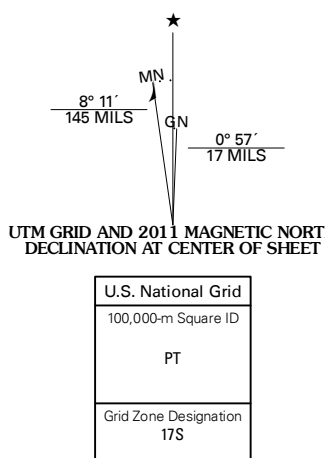


CENTENARY QUADRANGLE  
SOUTH CAROLINA  
7.5-MINUTE SERIES



Produced by the United States Geological Survey  
North American Datum of 1983 (NAD83)  
World Geodetic System of 1984 (WGS84). Projection and  
1 000-meter grid: Universal Transverse Mercator, Zone 17S  
10 000-foot ticks: South Carolina Coordinate System of 1983

Imagery.....N/AIP, June 2009  
Roads.....©2006-2010 Tele Atlas  
Names.....GNIS, 2010  
Hydrography.....National Hydrography Dataset, 2009  
Contours.....National Elevation Dataset, 2011  
Boundaries.....Census, IBWC, USGS, 1972-2010



CONTOUR INTERVAL 10 FEET  
NORTH AMERICAN VERTICAL DATUM OF 1988  
This map was produced to conform with version 0.5.10  
of the USGS US Topo Product Standard.  
A metadata file associated with this product is draft version 0.5.16



QUADRANGLE LOCATION		
Marion	Mullins	Nichols
Friendship	Centenary	Gulva's Ferry
Gresham	Brittons Neck	Horry

ROAD CLASSIFICATION		
Interstate Route	State Route	Local Road
US Route	4WD	
Ramp	Interstate Route	US Route
	State Route	

CENTENARY, SC  
2011