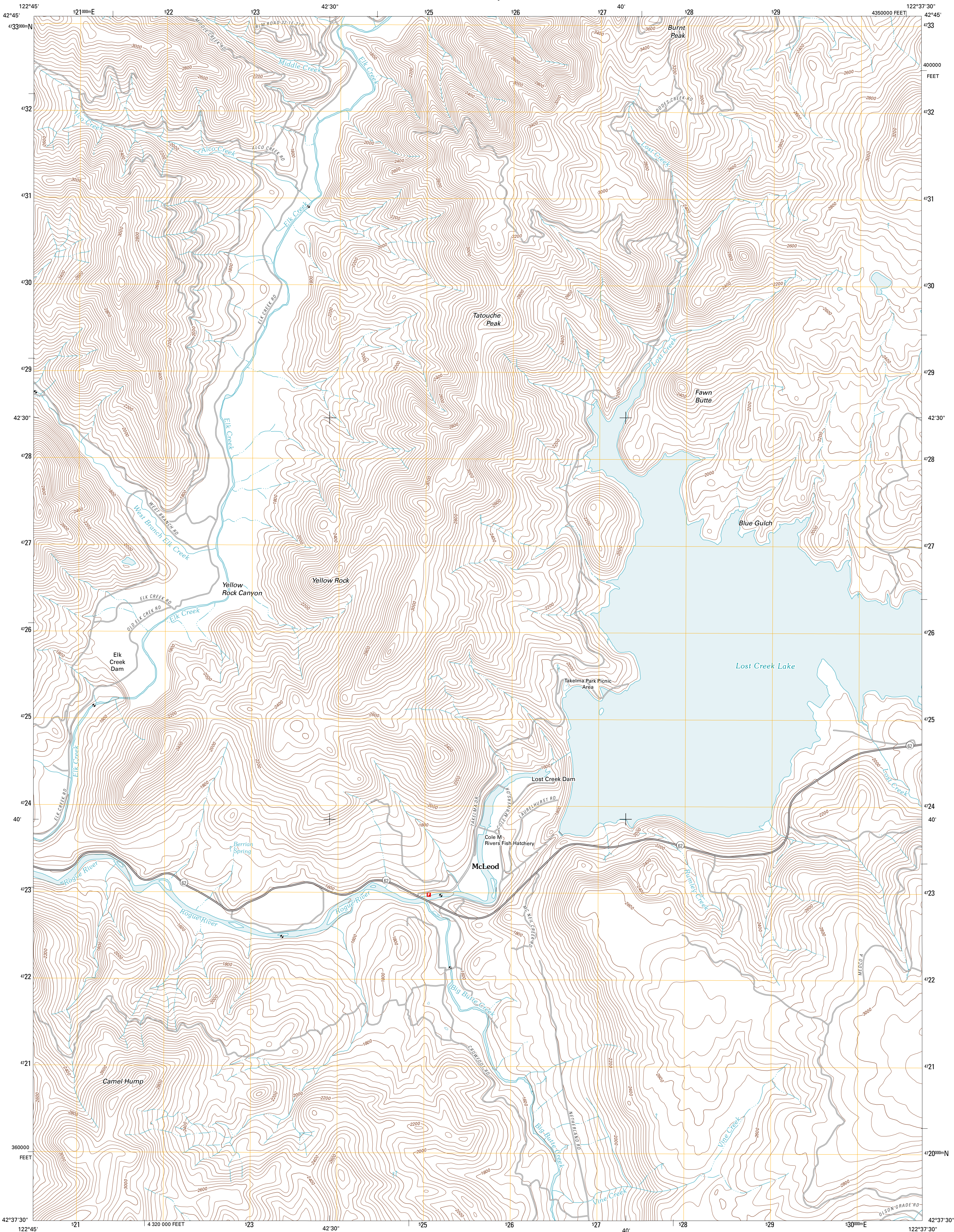




U.S. DEPARTMENT OF THE INTERIOR
U. S. GEOLOGICAL SURVEY

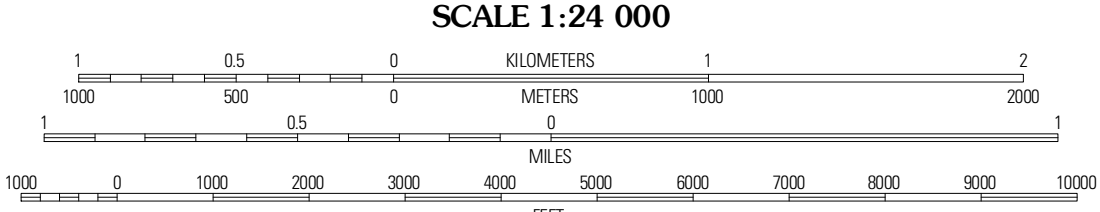
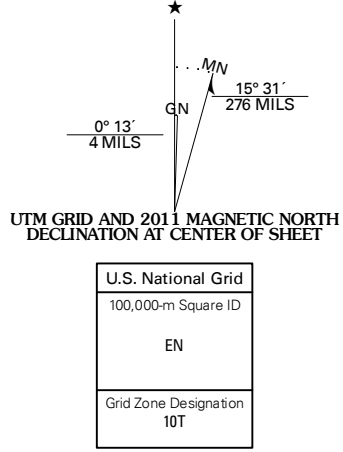


MCLEOD QUADRANGLE
OREGON-JACKSON CO.
7.5-MINUTE SERIES



Produced by the United States Geological Survey
North American Datum of 1983 (NAD83)
World Geodetic System of 1984 (WGS84). Projection and
1 000-meter grid: Universal Transverse Mercator, Zone 10T
10 000-foot ticks: Oregon Coordinate System of 1983 (south
zone)

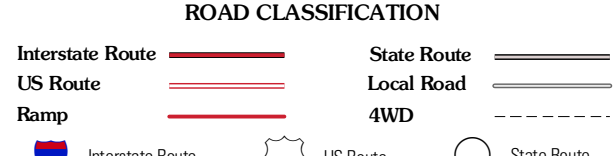
Imagery.....N.A.P., July 2009
Roads.....©2006-2010 Tele Atlas
Names.....GNSS, 2010
Hydrography.....National Hydrography Dataset, 2009
Contours.....National Elevation Dataset, 1999
Boundaries.....Census, IBWC, IBC, USGS, 1972 - 2010



CONTOUR INTERVAL 40 FEET
NORTH AMERICAN VERTICAL DATUM OF 1988
This map was produced to conform with version 0.5.10
of the USGS US Topo Product Standard.
A metadata file associated with this product is draft version 0.5.16



Ragsdale Butte	Sugarpine Creek	Whetstone Point
Trail	McLeod	Cascade Gorge
Shady Cove	Oberchain Mountain	Butte Falls



MCLEOD, OR
2011

ADJOINING 7.5' QUADRANGLES