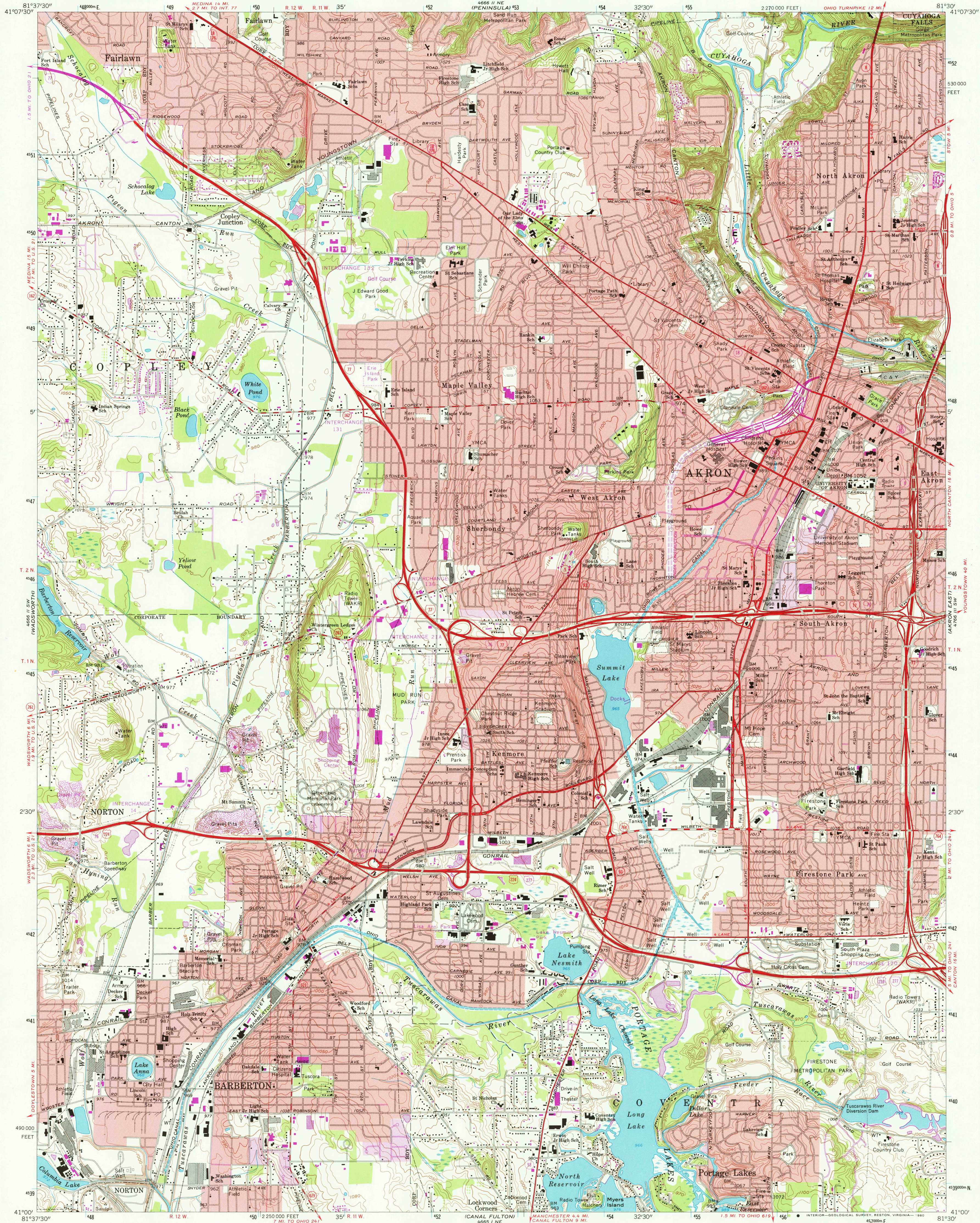
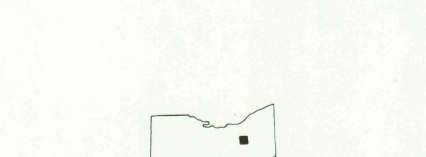
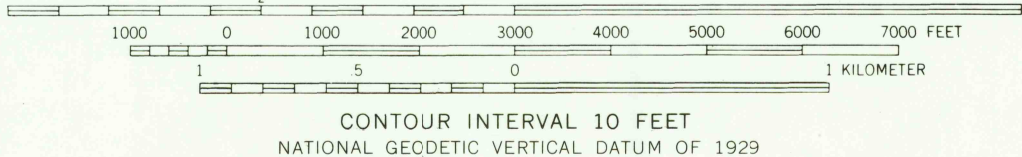
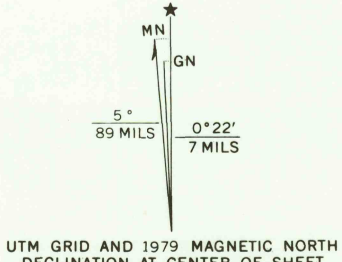


UNITED STATES
DEPARTMENT OF THE INTERIOR
GEOLOGICAL SURVEY

AKRON WEST QUADRANGLE
OHIO-SUMMIT CO.
7.5 MINUTE SERIES (TOPOGRAPHIC)



Mapped, edited, and published by the Geological Survey
Revised in cooperation with State of Ohio Agencies
Control by USGS and USC&GS
Topography by photogrammetric methods from aerial photographs
taken 1957. Field checked 1958. Revised from aerial
photographs taken 1966. Field checked 1967
Polyconic projection. 1927 North American datum.
10,000-foot grid based on Ohio coordinate system, north zone
1000-meter Universal Transverse Mercator grid ticks,
zone 17, shown in blue
Fine red dashed lines indicate selected fence and field lines where
generally visible on aerial photographs. This information is unchecked
Red tint indicates areas in which only landmark buildings are shown
Entire area lies within the Connecticut Western Reserve
Land lines established by private subdivision of the
Connecticut Western Reserve



ROAD CLASSIFICATION
Primary highway, all weather, hard surface
Secondary highway, all weather, hard surface
Unimproved road, fair or dry weather
Interstate Route
U.S. Route
State Route

USGS
AKRON WEST, OHIO
Historical File
Topographic Division
N4100-W8130/7.5
1967
PHOTOREVISED 1979
AMS 4666 II SE-SERIES V852

JUL 1 6 1980