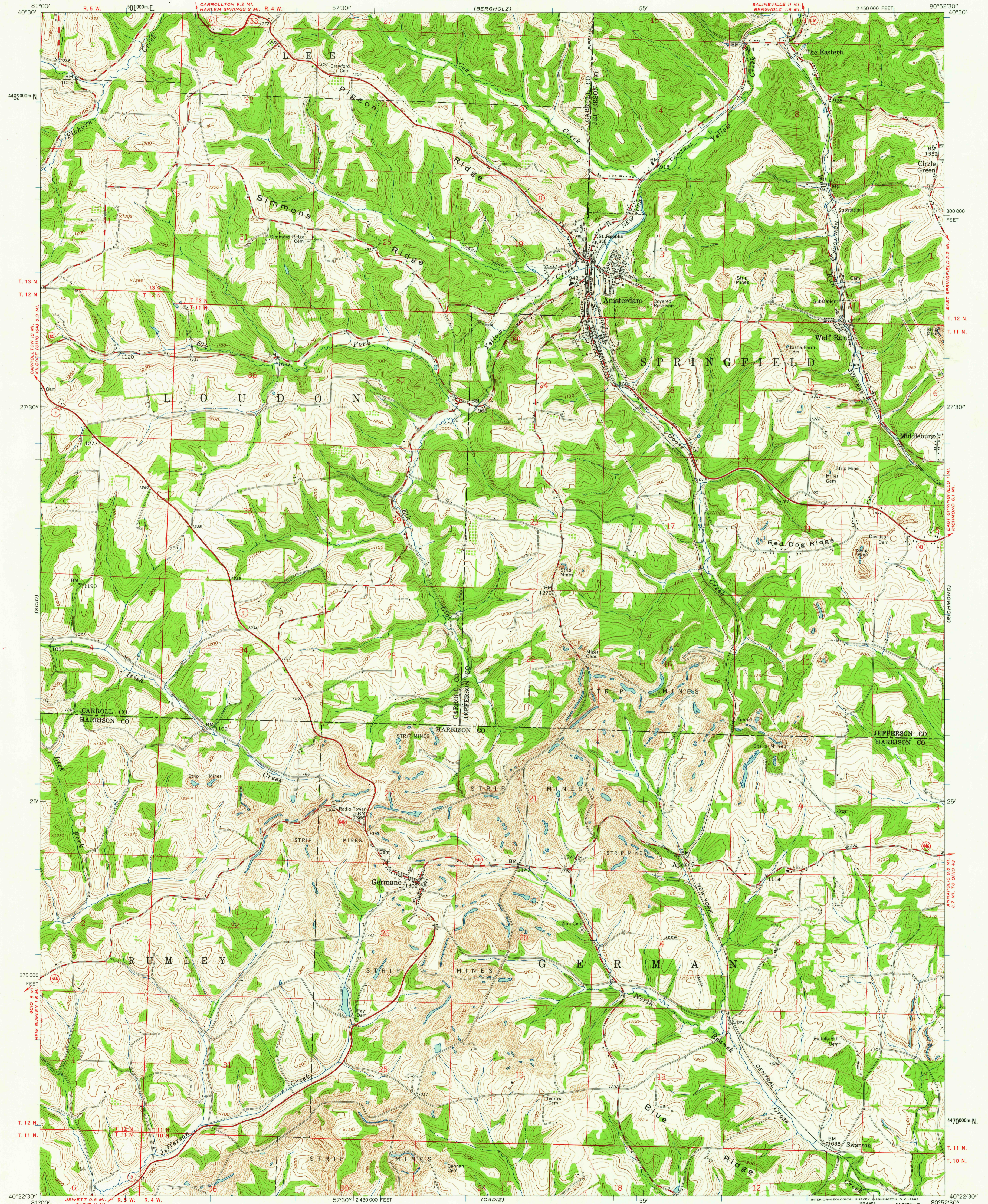


UNITED STATES
DEPARTMENT OF THE INTERIOR
GEOLOGICAL SURVEY

STATE OF OHIO
DEPARTMENT OF HIGHWAYS
DEPARTMENT OF NATURAL RESOURCES
DIVISION OF GEOLOGICAL SURVEY

AMSTERDAM QUADRANGLE
OHIO
7.5 MINUTE SERIES (TOPOGRAPHIC)
NW 1/4 CADIZ 15' QUADRANGLE



Mapped, edited, and published by the Geological Survey

Control by USGS and USC&GS

Topography by photogrammetric methods from aerial photographs taken 1958 and 1959. Field checked 1960

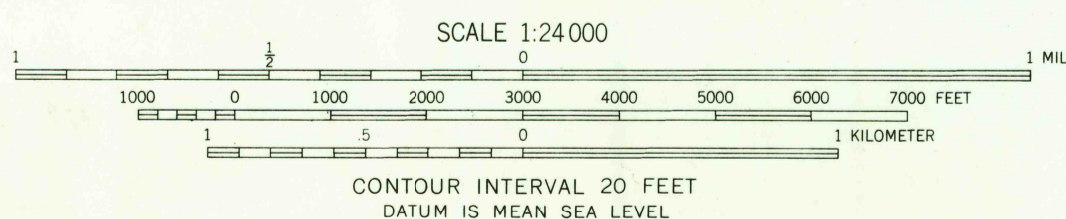
Polyconic projection, 1927 North American datum
10,000-foot grid based on Ohio coordinate system, north zone
1000-meter Universal Transverse Mercator grid ticks, zone 17, shown in blue

Fine red dashed lines indicate selected fence and field lines where generally visible on aerial photographs. This information is unchecked

Entire area lies within the Old Seven Ranges

Land lines based on the Ohio River Base

APPROXIMATE MEAN
DECLINATION, 1960



USGS
Historical File
Topographic Division



QUADRANGLE LOCATION

ROAD CLASSIFICATION
Heavy-duty ——— Light-duty ———
Medium-duty ——— Unimproved dirt ———
State Route

U.S.G.S.
FILE COPY
TOPOGRAPHIC DIVISION
AMSTERDAM, OHIO
NW 1/4 CADIZ 15' QUADRANGLE
N4022.5-W8052.5/7.5
1960

THIS MAP COMPLIES WITH NATIONAL MAP ACCURACY STANDARDS
FOR SALE BY U. S. GEOLOGICAL SURVEY, WASHINGTON 25, D. C.
A FOLDER DESCRIBING TOPOGRAPHIC MAPS AND SYMBOLS IS AVAILABLE ON REQUEST

OCT - 8 1962

2655