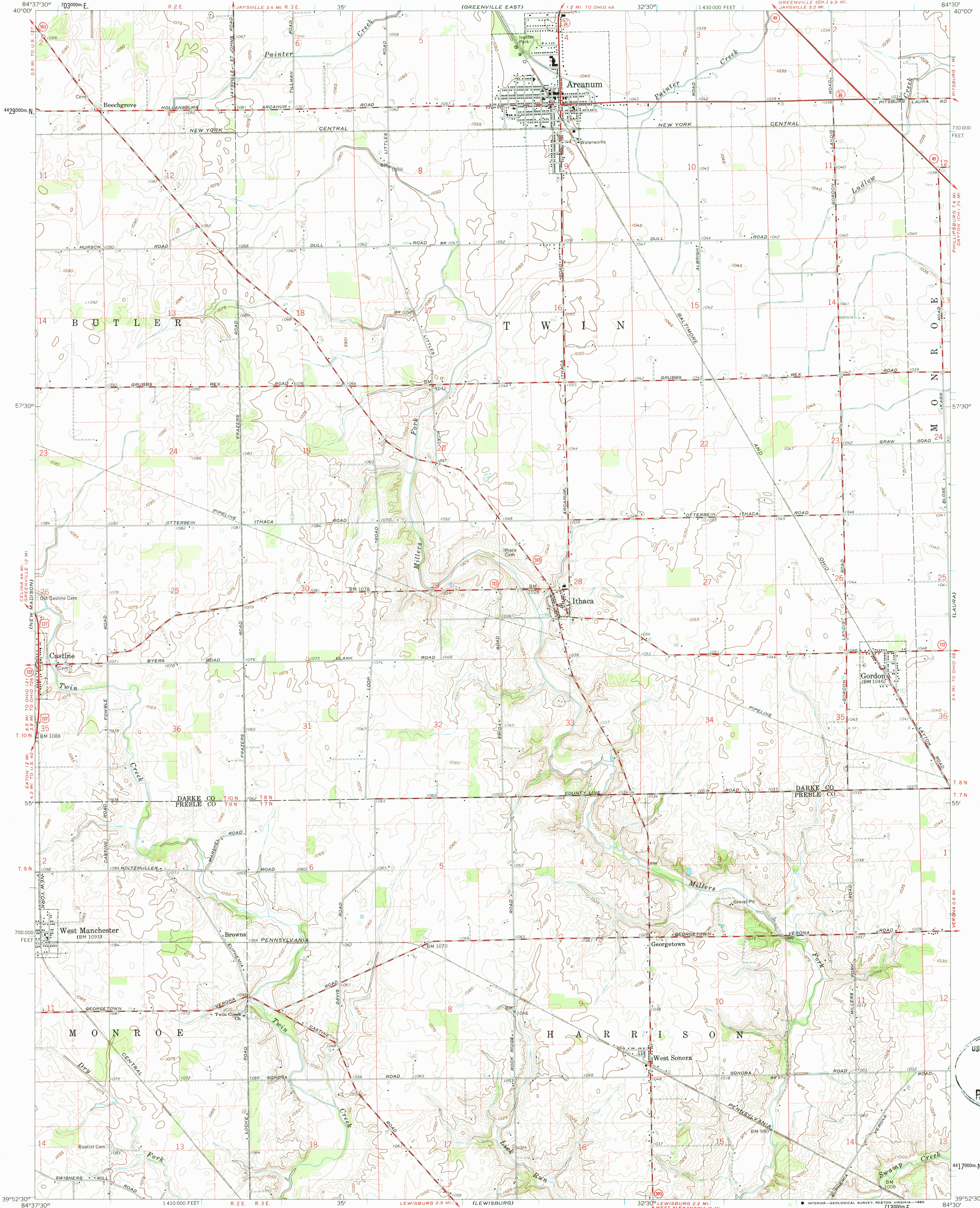


UNITED STATES
DEPARTMENT OF THE INTERIOR
GEOLOGICAL SURVEY

STATE OF OHIO
DEPARTMENT OF HIGHWAYS
DEPARTMENT OF NATURAL RESOURCES
DIVISION OF GEOLOGICAL SURVEY

ARCANUM QUADRANGLE
OHIO
7.5 MINUTE SERIES (TOPOGRAPHIC)
NE 1/4 WEST MANCHESTER 15' QUADRANGLE



Mapped, edited, and published by the Geological Survey

Control by USGS and USC&GS

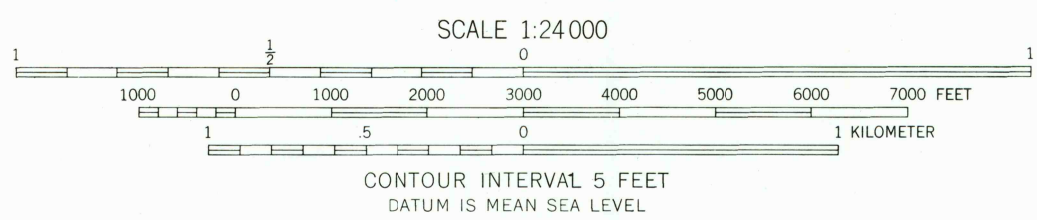
Topography by photogrammetric methods from aerial photographs taken 1956-57 and 1959-60. Field checked 1961

Polyconic projection. 1927 North American datum
10,000-foot grid based on Ohio coordinate system, south zone
1000-meter Universal Transverse Mercator grid ticks, zone 16, shown in blue

Entire area lies within the Miami River Survey
Land lines based on the Great Miami River Base

Fine red dashed lines indicate selected fence and field lines where generally visible on aerial photographs. This information is unchecked

APPROXIMATE MEAN
DECLINATION, 1961



ROAD CLASSIFICATION
Heavy-duty ——— Light-duty ———
Medium-duty ——— Unimproved dirt ———
U. S. Route —○— State Route —○—



ARCANUM, OHIO
NE 1/4 WEST MANCHESTER 15' QUADRANGLE
N 3952.5 — W 8430/7.5

1961

USGS NMD HISTORICAL MAP
SEP 25 1996
REC'D FILE COPY