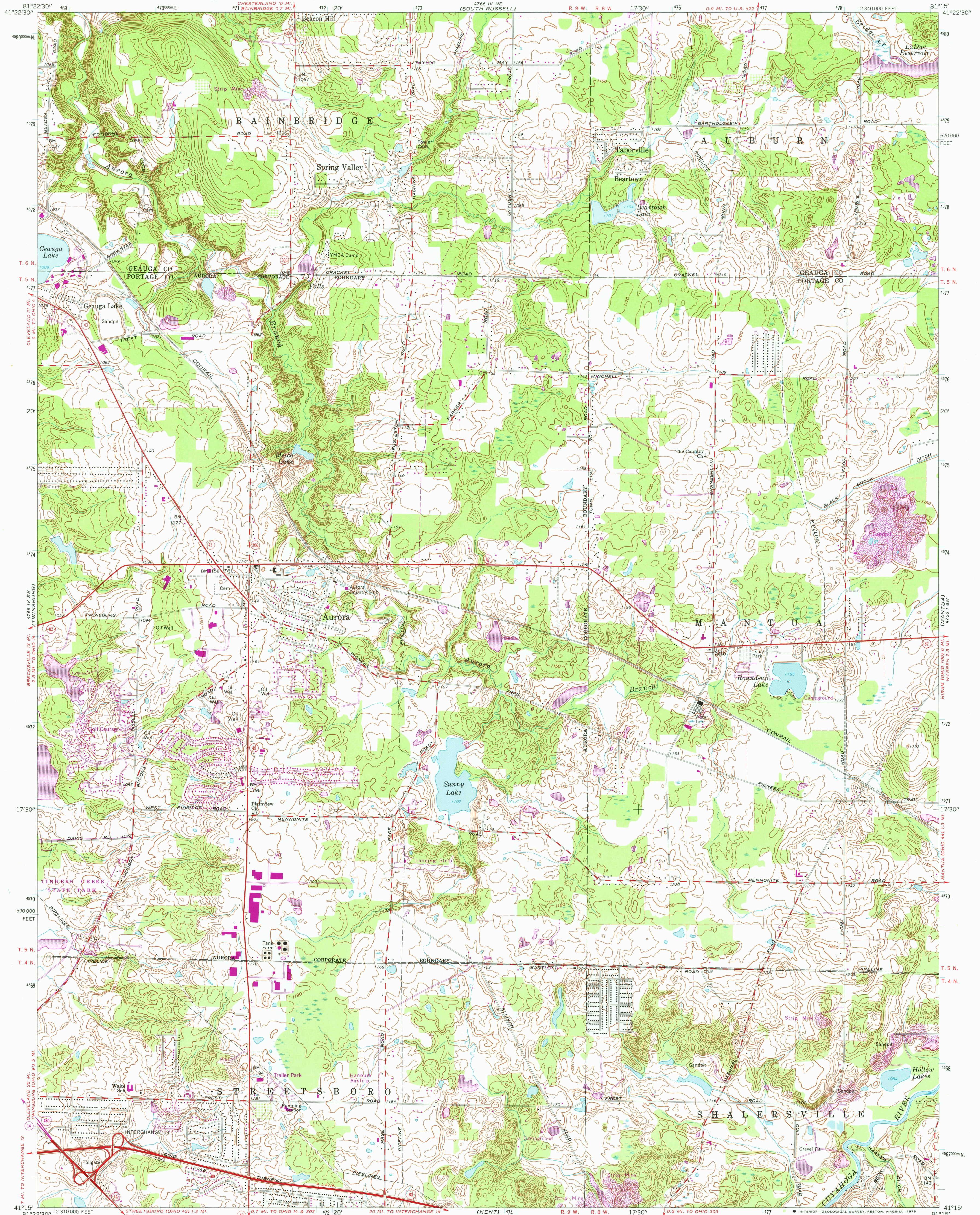


UNITED STATES  
DEPARTMENT OF THE INTERIOR  
GEOLOGICAL SURVEY

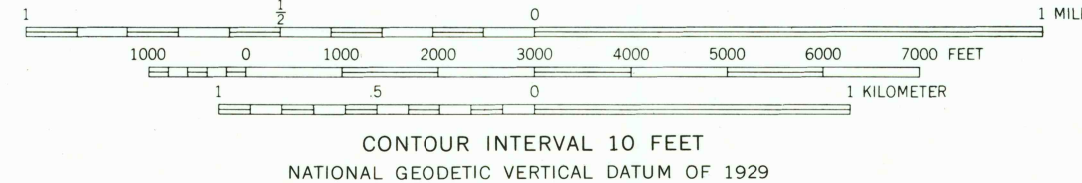
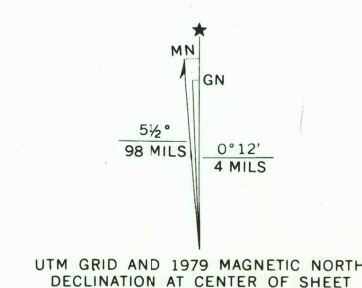


AURORA QUADRANGLE  
OHIO  
7.5 MINUTE SERIES (TOPOGRAPHIC)

476 1 NW  
(BAURTON)



Mapped, edited, and published by the Geological Survey  
Revised in cooperation with State of Ohio agencies  
Control by USGS, USCGS, and the Cleveland Regional Geodetic Survey  
Topography by photogrammetric methods from aerial photographs  
taken 1952. Field checked 1953. Revised from aerial photographs  
taken 1962. Field checked 1962  
Polyconic projection. 1927 North American datum  
10,000-foot grid based on Ohio coordinate system, north zone  
1000-meter Universal Transverse Mercator grid ticks,  
zone 17, shown in blue  
Fine red dashed lines indicate selected fence and field lines where  
generally visible on aerial photographs. This information is unchecked  
Area covered by dashed light blue pattern is subject to controlled inundation  
Entire area lies within the Connecticut Western Reserve. Land lines  
established by private subdivision of the Connecticut Western Reserve



THIS MAP COMPLIES WITH NATIONAL MAP ACCURACY STANDARDS  
FOR SALE BY U.S. GEOLOGICAL SURVEY, RESTON, VIRGINIA 22092  
A FOLDER DESCRIBING TOPOGRAPHIC MAPS AND SYMBOLS IS AVAILABLE ON REQUEST



ROAD CLASSIFICATION  
Heavy-duty ——— Light-duty ———  
Medium-duty ——— Unimproved dirt ———  
Interstate Route ——— State Route ———

USGS  
Historical File  
Topographic Division  
AURORA, OHIO  
N4115—W8115/7.5  
1962  
PHOTOREVISED 1979  
AMS 4766 IV SE—SERIES V852

FEB 19 1980

1350