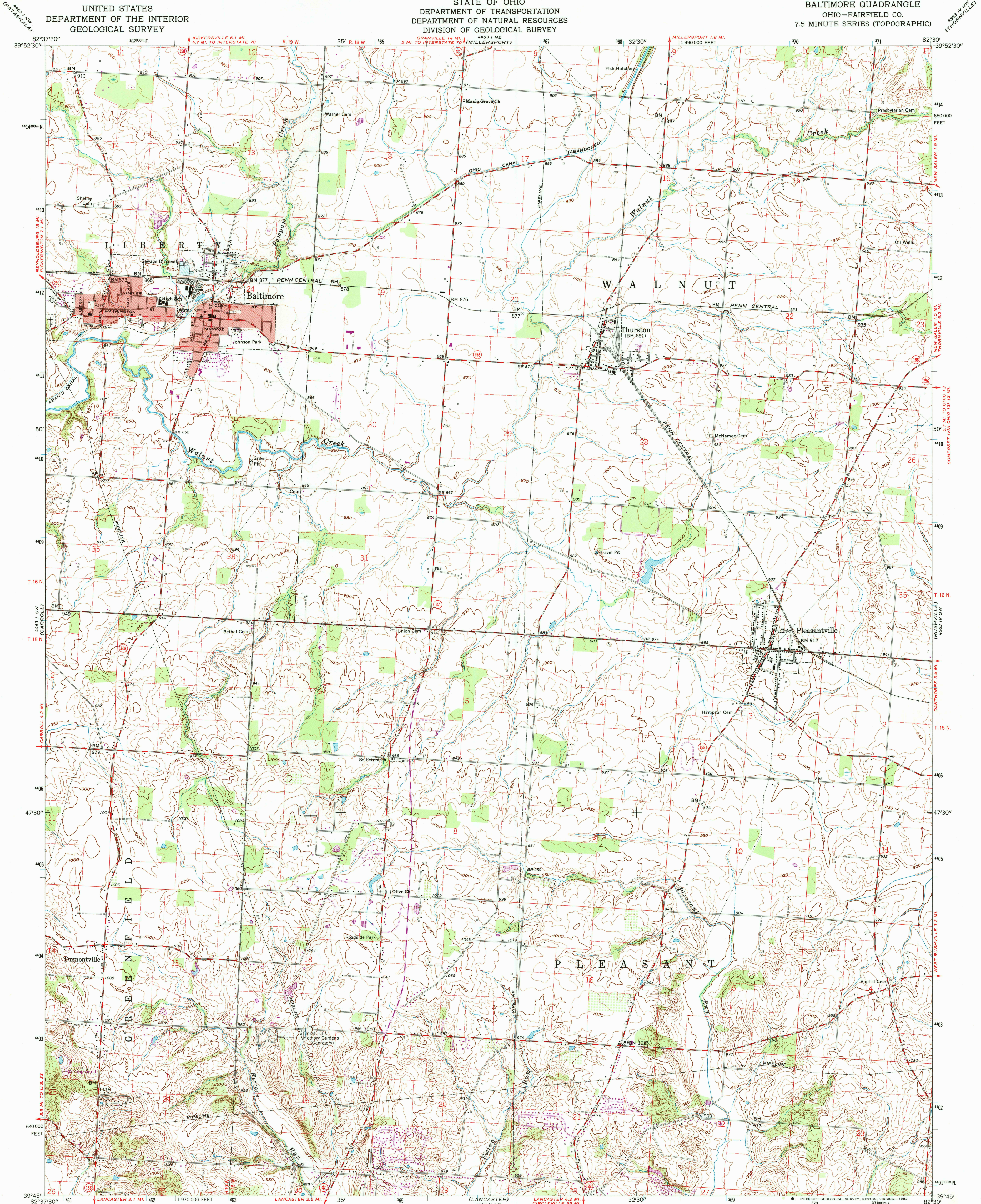


UNITED STATES
DEPARTMENT OF THE INTERIOR
GEOLOGICAL SURVEY

STATE OF OHIO
DEPARTMENT OF TRANSPORTATION
DEPARTMENT OF NATURAL RESOURCES
DIVISION OF GEOLOGICAL SURVEY

BALTIMORE QUADRANGLE
OHIO—FAIRFIELD CO.
7.5 MINUTE SERIES (TOPOGRAPHIC)



Mapped, edited, and published by the Geological Survey

Control by USGS & USCA&GS

Topography by photogrammetric methods from aerial
photographs taken 1959-60. Field checked 1961

Polyconic projection. 1927 North American datum
10,000-foot grid based on Ohio coordinate system, south zone
1000-metre Universal Transverse Mercator grid ticks,
zone 17, shown in blue

Red tint indicates areas in which only landmark buildings are shown

Entire area lies within Congress Lands east of the Scioto River
Land lines based on the Ohio River Base

The difference between 1927 North American Datum and North
American Datum of 1983 (NAD 83) for 7.5-minute intersections
is given in USGS Bulletin 1875. The NAD 83 is shown by
dashed corner ticks

UTM GRID AND 1974 MAGNETIC NORTH
DECLINATION AT CENTER OF SHEET

Map photocopied 1987
No major culture or drainage changes observed

SCALE 1:24,000

1 1000 0 1000 2000 3000 4000 5000 6000 7000 FEET
1 5 10 15 20 25 30 35 40 45 50 KILOMETRE

CONTOUR INTERVAL 10 FEET
NATIONAL GEODETIC VERTICAL DATUM OF 1929

OHIO
QUADRANGLE LOCATION



ROAD CLASSIFICATION

Medium-duty ——— Light-duty ———

Unimproved dirt ———

State Route —○—

BALTIMORE, OHIO

39082-65-TF-024
PHOTOINSPECTED 1987

1961

PHOTOREVISED 1974

DNA 4463 1 SE—SERIES V852

THIS MAP COMPLIES WITH NATIONAL MAP ACCURACY STANDARDS

FOR SALE BY U.S. GEOLOGICAL SURVEY

DENVER, COLORADO 80225, OR RESTON, VIRGINIA 22092

A FOLDER DESCRIBING TOPOGRAPHIC MAPS AND SYMBOLS IS AVAILABLE ON REQUEST

Revisions shown in purple compiled from topographic maps
State of Ohio agencies from aerial photographs taken
1974. This information not field checked.