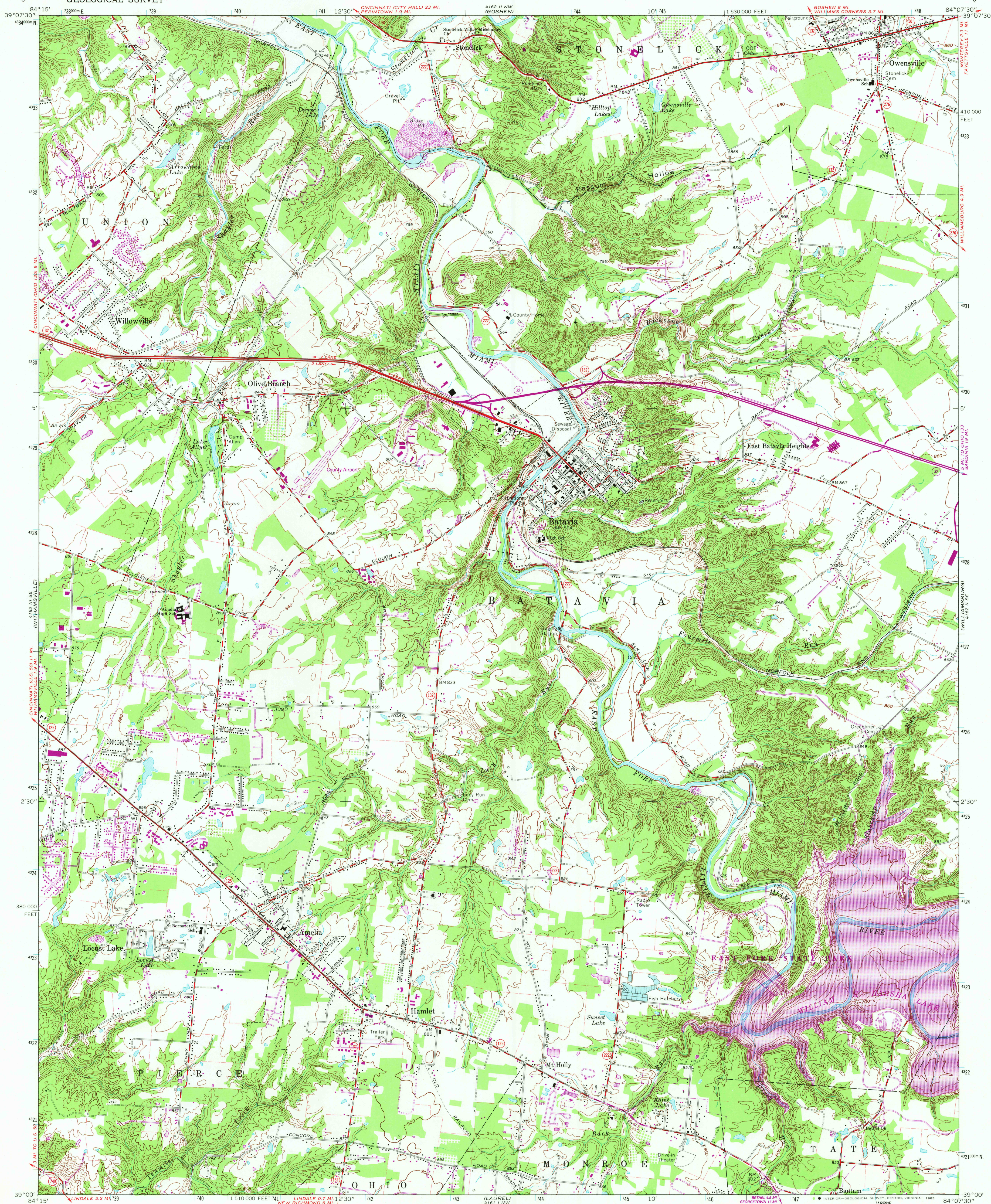
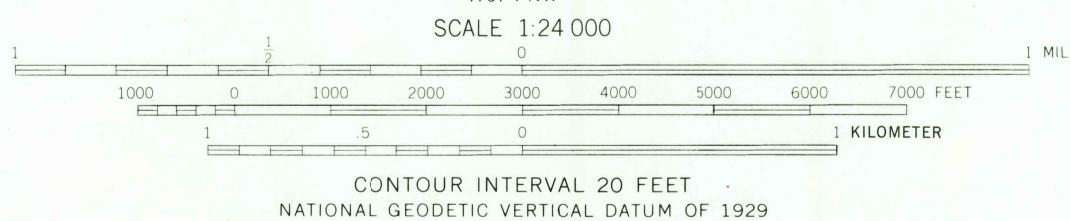
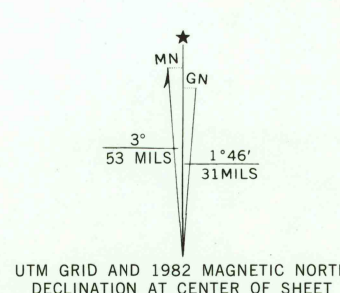


UNITED STATES  
DEPARTMENT OF THE INTERIOR  
GEOLOGICAL SURVEY

BATAVIA QUADRANGLE  
OHIO—CLERMONT CO.  
7.5 MINUTE SERIES (TOPOGRAPHIC)



Mapped, edited, and published by the Geological Survey  
Revised in cooperation with State of Ohio agencies  
Control by USGS and NOS/NOAA  
Topography by photogrammetric methods from aerial photographs  
taken 1952. Field checked 1953. Revised 1965  
Polyconic projection. 10,000-foot grid ticks based on  
Ohio coordinate system, south zone. 1000-meter  
Universal Transverse Mercator grid ticks, zone 16,  
shown in blue. 1927 North American Datum. To place on  
the predicted North American Datum 1983  
move the projection lines 3 meters south and 6 meters  
west as shown by dashed corner ticks.  
Fine red dashed lines indicate selected fence and field lines where  
generally visible on aerial photographs. This information is uncorrected  
Entire area lies within the Virginia Military District  
There may be private inholdings within the boundaries of the National or  
State reservations shown on this map  
Revisions shown in purple and woodland compiled in cooperation  
with State of Ohio agencies from aerial photographs taken 1979  
and other sources. This information not field checked.  
Map edited 1982



ROAD CLASSIFICATION	
Heavy-duty	Light-duty
Medium-duty	Unimproved dirt
U.S. Route	State Route

BATAVIA, OHIO  
N3900—W8407.5/7.5  
1965  
PHOTOREVISED 1982  
DMA 4162 II SW—SERIES V852

THIS MAP COMPLIES WITH NATIONAL MAP ACCURACY STANDARDS  
FOR SALE BY U.S. GEOLOGICAL SURVEY, RESTON, VIRGINIA 22092  
A FOLDER DESCRIBING TOPOGRAPHIC MAPS AND SYMBOLS IS AVAILABLE ON REQUEST

RETURN TO:  
USGS AND HISTORICAL MAP ARCHIVES  
JUN 2 1982