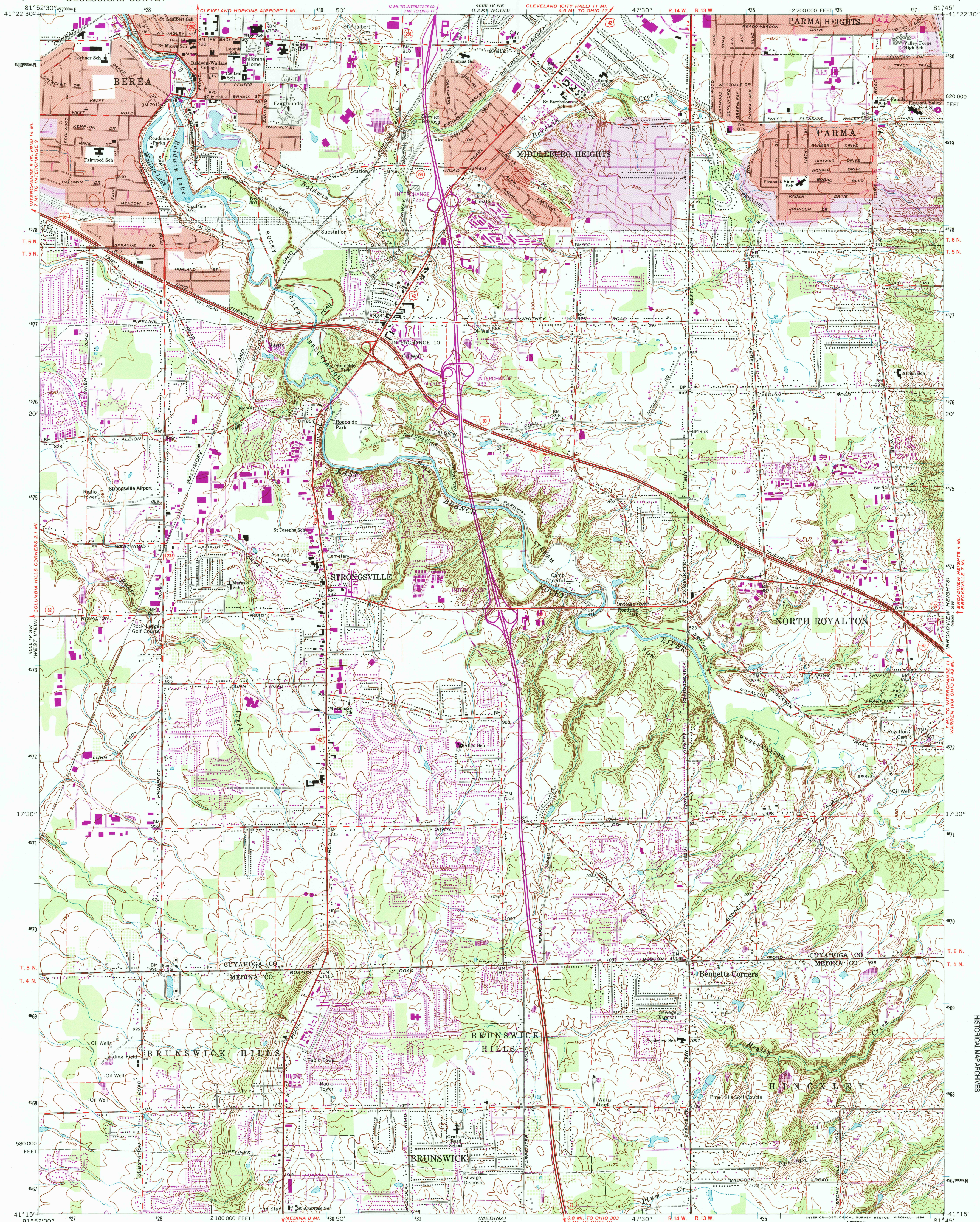


UNITED STATES
DEPARTMENT OF THE INTERIOR
GEOLOGICAL SURVEY

BEREA QUADRANGLE
OHIO
7.5 MINUTE SERIES (TOPOGRAPHIC)



Mapped, edited, and published by the Geological Survey
Revised in cooperation with State of Ohio agencies
Control by USGS, NOS/NOAA, and Cleveland Regional Geodetic Survey
Topography by photogrammetric methods from aerial photographs
taken 1952 and planetable surveys 1953. Revised from aerial
photographs taken 1962. Field checked 1963
Polyconic projection. 10,000-foot grid ticks based on Ohio
coordinate system, north zone
1000-meter Universal Transverse Mercator grid ticks,
zone 17, shown in blue
1927 North American Datum
To place on the predicted North American Datum 1983
move the projection lines 2 meters south and
12 meters west as shown by dashed corner ticks
Fine red dashed lines indicate selected fence and field lines where
generally visible on aerial photographs
Red tint indicates areas in which only landmark buildings are shown

UTM GRID AND 1984 MAGNETIC NORTH
DECLINATION AT CENTER OF SHEET
Entire area lies within the Connecticut Western Reserve
Land lines established by private subdivision of the
Connecticut Western Reserve

THIS MAP COMPLIES WITH NATIONAL MAP ACCURACY STANDARDS
FOR SALE BY U. S. GEOLOGICAL SURVEY
DENVER, COLORADO 80225, OR RESTON, VIRGINIA 22092
A FOLDER DESCRIBING TOPOGRAPHIC MAPS AND SYMBOLS IS AVAILABLE ON REQUEST

Revisions shown in purple and woodland compiled in cooperation
with State of Ohio agencies from aerial photographs
taken 1982 and other sources. This information not field checked
Map edited 1984
Purple tint indicates extension of urban areas

ROAD CLASSIFICATION
Heavy-duty ——— Light-duty ———
Medium-duty ——— Unimproved dirt ———
Interstate Route U. S. Route State Route

BEREA, OHIO
41081-C7-TF-024

1983
PHOTOREVISED 1984
DMA 4666 IV SE-SERIES V852

RECEIVED
MAR 31 1999
USGS NHD
HISTORICAL MAP ARCHIVES

