

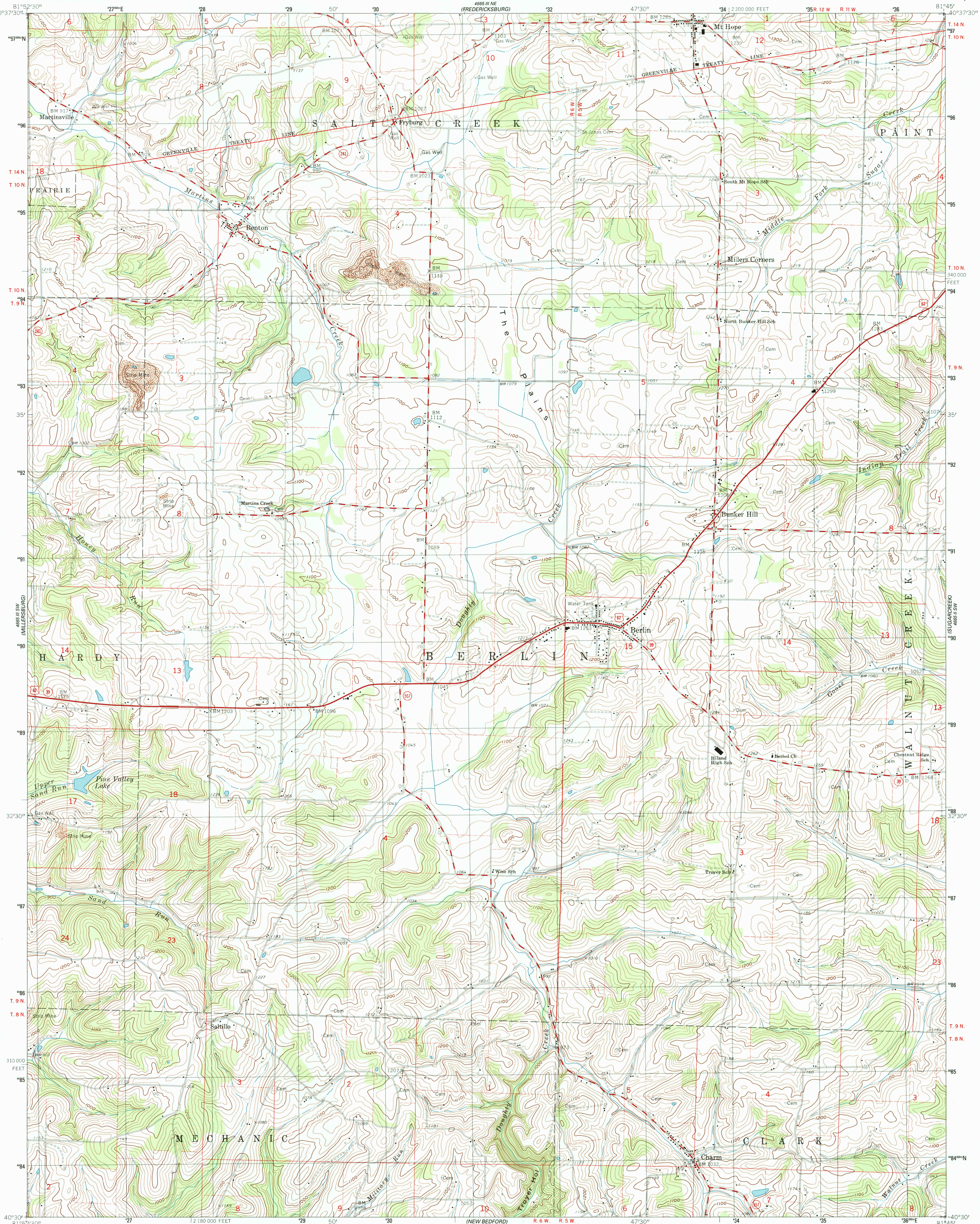
4685 III SW  
(HOLMESVILLE)

UNITED STATES  
DEPARTMENT OF THE INTERIOR  
GEOLOGICAL SURVEY

STATE OF OHIO  
DEPARTMENT OF TRANSPORTATION  
DEPARTMENT OF NATURAL RESOURCES  
DIVISION OF GEOLOGICAL SURVEY

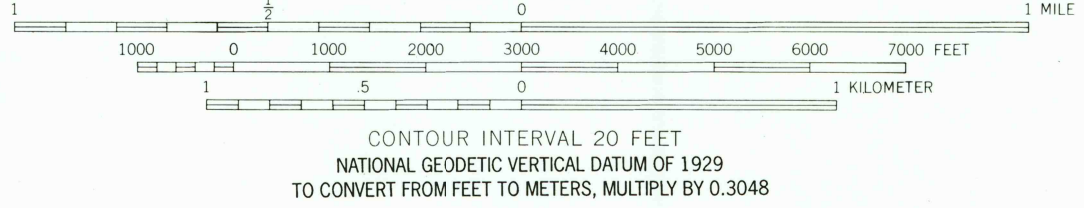
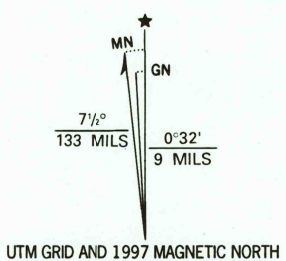
BERLIN QUADRANGLE  
OHIO - HOLMES CO.  
7.5 MINUTE SERIES (TOPOGRAPHIC)

4685 I NW  
(WILMOT)



4685 I SW  
(WILMOT)

Produced by the United States Geological Survey  
Topography compiled 1960. Planimetry derived from imagery taken 1960. Photosinspected using imagery dated 1994; no major culture or drainage changes observed. Survey control current as of 1962. Boundaries verified 1997.  
North American Datum of 1927 (NAD 27). Projection and 10 000-foot ticks: Ohio coordinate system, north zone (Lambert conformal conic).  
1000-meter Universal Transverse Mercator grid, zone 17.  
North American Datum of 1983 (NAD 83) is shown by dashed corner ticks. The values of the shift between NAD 27 and NAD 83 for 7.5-minute intersections are obtainable from National Geodetic Survey NADCON software.  
Area north of Greenville Treaty Line lies within Congress Lands north of the Old Seven Ranges. Land lines based on the Ohio River Base.  
Area south of Greenville Treaty Line lies within the United States Military District. Land lines based on the Base Line of the United States Military District.



ROAD CLASSIFICATION  
Primary highway, hard surface  
Secondary highway, hard surface  
Light-duty road, hard or improved surface  
Unimproved road  
Interstate Route  
U. S. Route  
State Route

BERLIN, OH  
1994

NIMA 4665 III SE-SERIES V852

