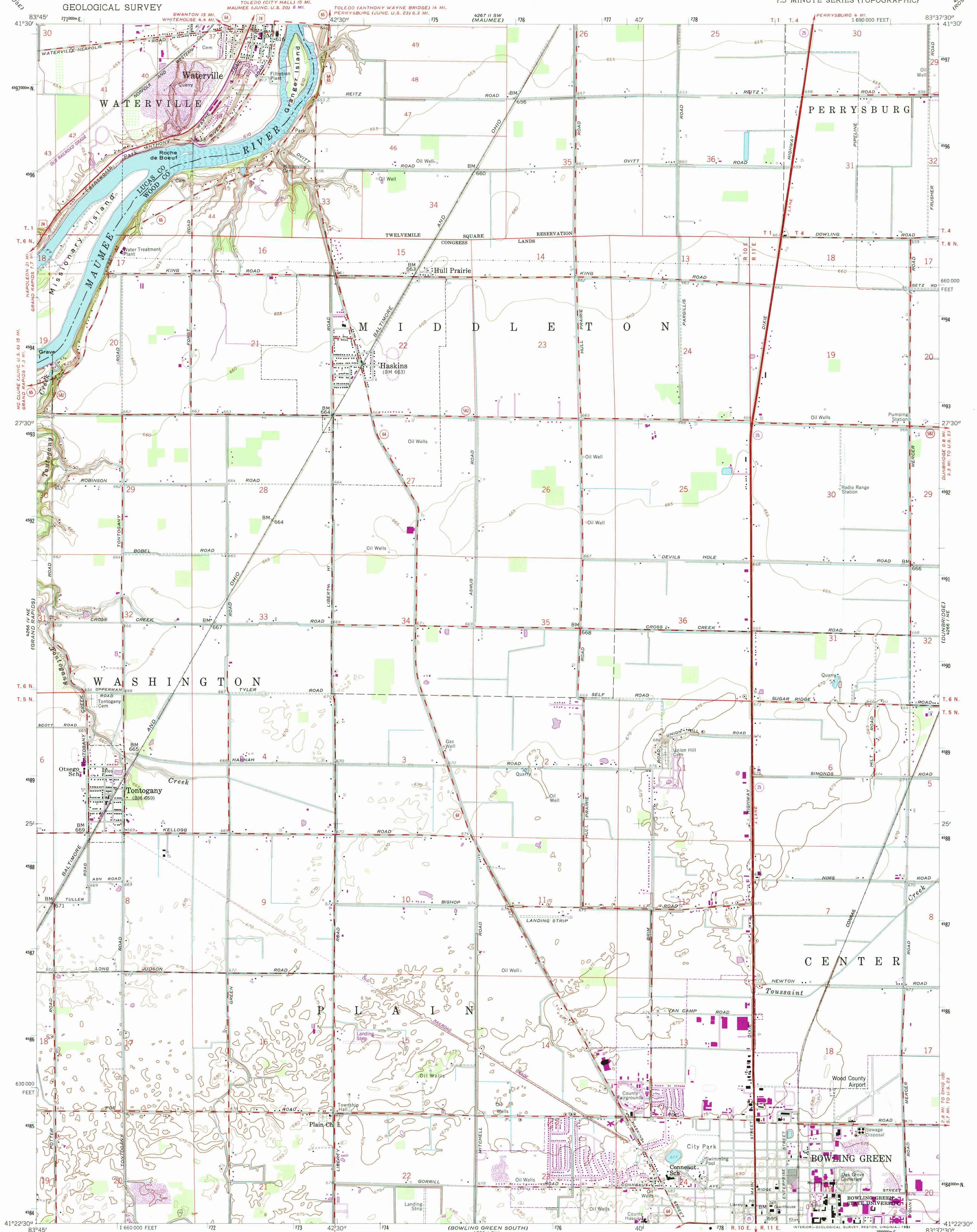


UNITED STATES
DEPARTMENT OF THE INTERIOR
GEOLOGICAL SURVEY

BOWLING GREEN NORTH QUADRANGLE
OHIO
7.5 MINUTE SERIES (TOPOGRAPHIC)

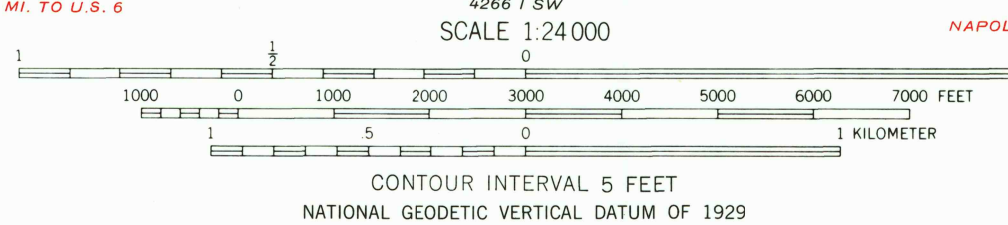


Mapped, edited, and published by the Geological Survey
Control by USGS and NOS/NOAA

Culture and drainage in Wood County from controlled aerial
photo mosaic. Aerial photographs taken 1951
Topography by planetable surveys 1958
Lucas County portion by planetable surveys 1935. Revised 1958

Polyconic projection. 10,000-foot grid based on
Ohio coordinate system, north zone
1000-meter Universal Transverse Mercator grid ticks,
zone 17, shown in blue. 1927 North American Datum
The difference between 1927 North American Datum and North American
Datum of 1983 (NAD 83) for 7.5-minute intersections is given in USGS
Bulletin 1875. The NAD 83 is shown by dashed corner ticks
Red tint indicates area in which only landmark buildings are shown
Land lines within Congress Lands based on the
First Principal Meridian

Map photorevised 1988
No major culture or drainage changes observed



ROAD CLASSIFICATION
Heavy-duty ——— Light-duty ———
Medium-duty ——— Unimproved dirt ———
U.S. Route ——— State Route ———

BOWLING GREEN NORTH, OHIO

41083D6-TF-024
PHOTOINSPECTED 1988
1958
PHOTOREVISED 1980
DMA 4266 1 NW—SERIES V852

Revisions shown in purple compiled in cooperation with State of
Ohio agencies from aerial photographs taken 1977 and other
source data. This information not field checked. Map edited 1980