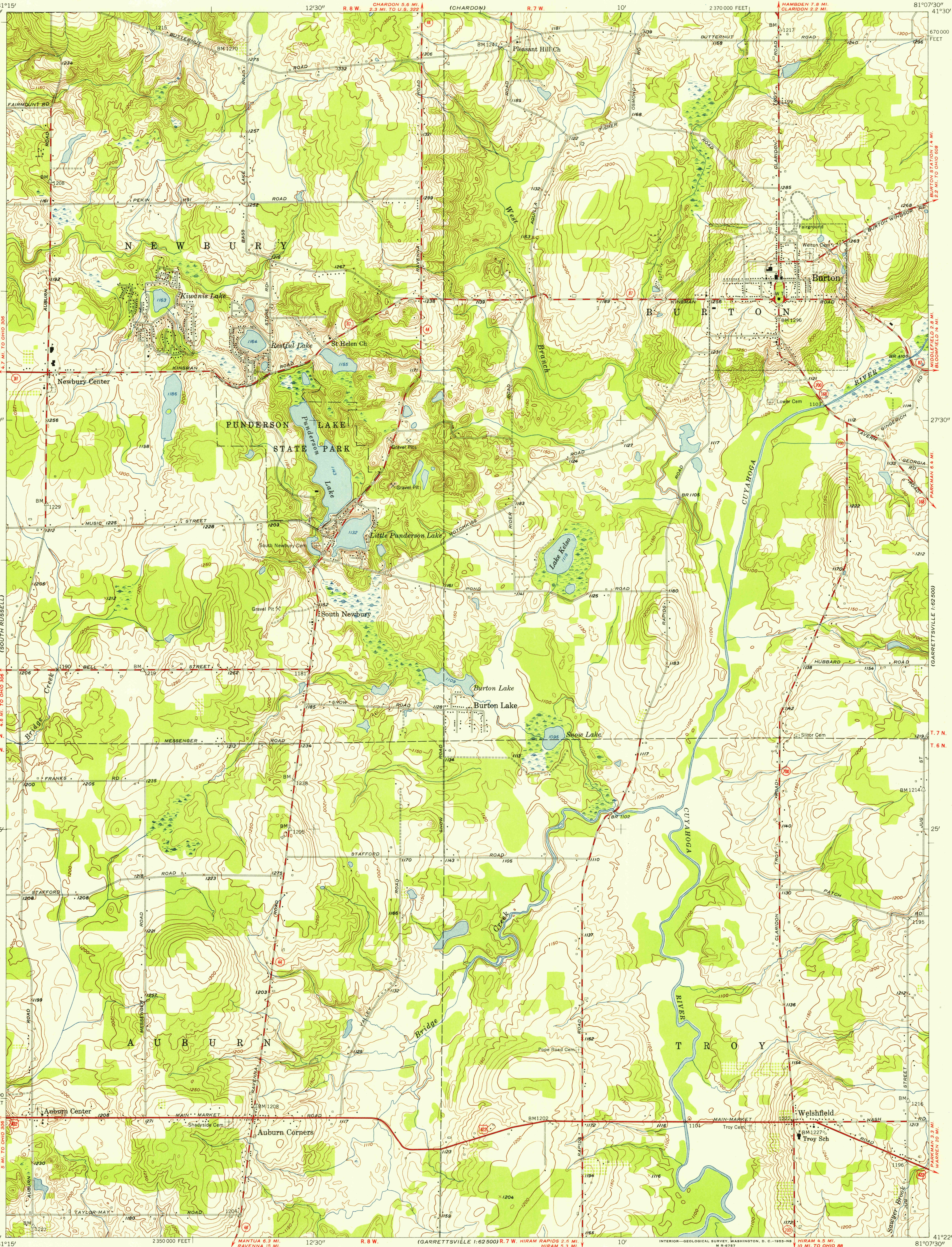


UNITED STATES
DEPARTMENT OF THE INTERIOR
GEOLOGICAL SURVEY

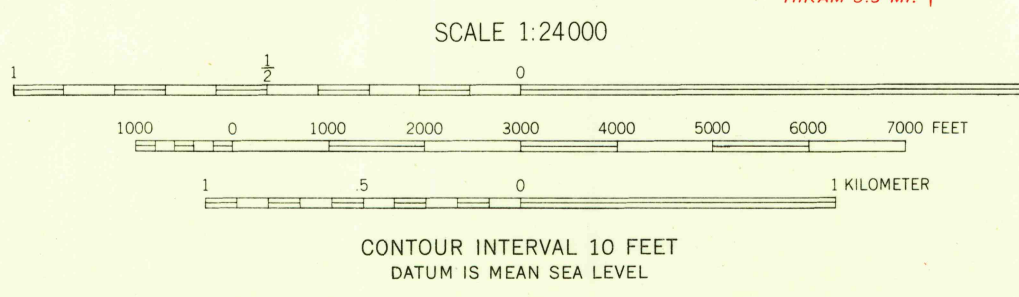
BURTON QUADRANGLE
OHIO—GEAUGA CO.
7.5 MINUTE SERIES (TOPOGRAPHIC)
NW 1/4 GARRETTSVILLE 15' QUADRANGLE

U.S.G.S.
FILE COPY
TOPOGRAPHIC DIVISION

U.S.G.S.
FILE COPY
TOPOGRAPHIC DIVISION



Mapped, edited, and published by the Geological Survey
Control by USGS and USC&GS
Topography from aerial photographs by Kelsh plotter
Aerial photographs taken 1952. Field check 1953
Polyconic projection. 1927 North American datum
10,000-foot grid based on Ohio coordinate system,
north zone
Entire area lies within the Connecticut Western Reserve
Land lines were established by the Connecticut Land Company



ROAD CLASSIFICATION
Heavy-duty ——— 4 LANE 16 LANE Light-duty ———
Medium-duty ——— 4 LANE 16 LANE Unimproved dirt ———
U.S. Route ——— State Route ———

BURTON, OHIO
NW 1/4 GARRETTSVILLE 15' QUADRANGLE
N 4122.5—W 8107.5/7.5

1953

THIS MAP COMPLIES WITH NATIONAL MAP ACCURACY STANDARDS
FOR SALE BY U. S. GEOLOGICAL SURVEY, WASHINGTON, 25, D. C.
A FOLDER DESCRIBING TOPOGRAPHIC MAPS AND SYMBOLS IS AVAILABLE ON REQUEST

MAY 18 1955

3210