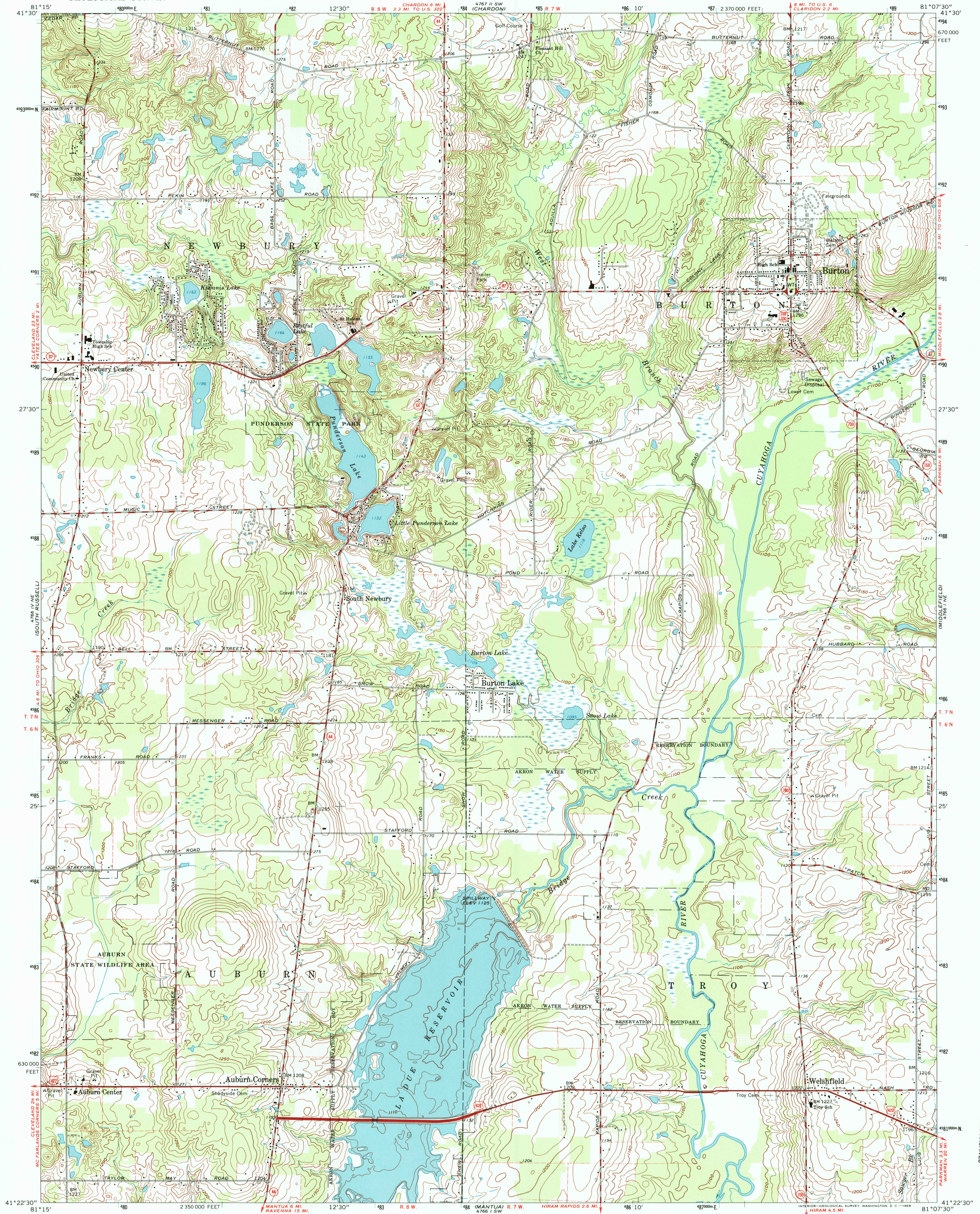


UNITED STATES
DEPARTMENT OF THE INTERIOR
GEOLOGICAL SURVEY

BURTON QUADRANGLE
OHIO—GEAUGA CO.
7.5 MINUTE SERIES (TOPOGRAPHIC)
NW/4 GARRETSVILLE 15' QUADRANGLE



Mapped, edited, and published by the Geological Survey
Revised in cooperation with State of Ohio agencies
Control by USGS and USC&GS
Topography by photogrammetric methods from aerial photographs
taken 1952. Field checked 1953. Revised 1966
Polyconic projection. 1927 North American datum
10,000-foot grid based on Ohio coordinate system, north zone
1000-meter Universal Transverse Mercator grid ticks,
zone 17, shown in blue
Fine red dashed lines indicate selected fence and field lines where
generally visible on aerial photographs. This information is unchecked!
Entire area lies within the Connecticut Western Reserve
Land lines established by private subdivision of the
Connecticut Western Reserve

UTM GRID AND 1966 MAGNETIC NORTH
DECLINATION AT CENTER OF SHEET

SCALE 1:24,000
1 MILE
1 KILOMETER
CONTOUR INTERVAL 10 FEET
DATUM IS MEAN SEA LEVEL

ROAD CLASSIFICATION
Heavy-duty ——— Light-duty ———
Medium-duty ——— Unimproved dirt ———
U.S. Route ——— State Route ———

OHIO
QUADRANGLE LOCATION

BURTON, OHIO
NW/4 GARRETSVILLE 15' QUADRANGLE
N4122.5—W8107.5/7.5
1966
AMS 4766 1 NW—SERIES W852

THIS MAP COMPLIES WITH NATIONAL MAP ACCURACY STANDARDS
FOR SALE BY U.S. GEOLOGICAL SURVEY, WASHINGTON, D.C. 20542
A FOLDER DESCRIBING TOPOGRAPHIC MAPS AND SYMBOLS IS AVAILABLE ON REQUEST

RECEIVED
MAY 3 1 1999
USGS NMD
HISTORICAL MAP ARCHIVES
16691271090846
X-1572H-L05-D-N831