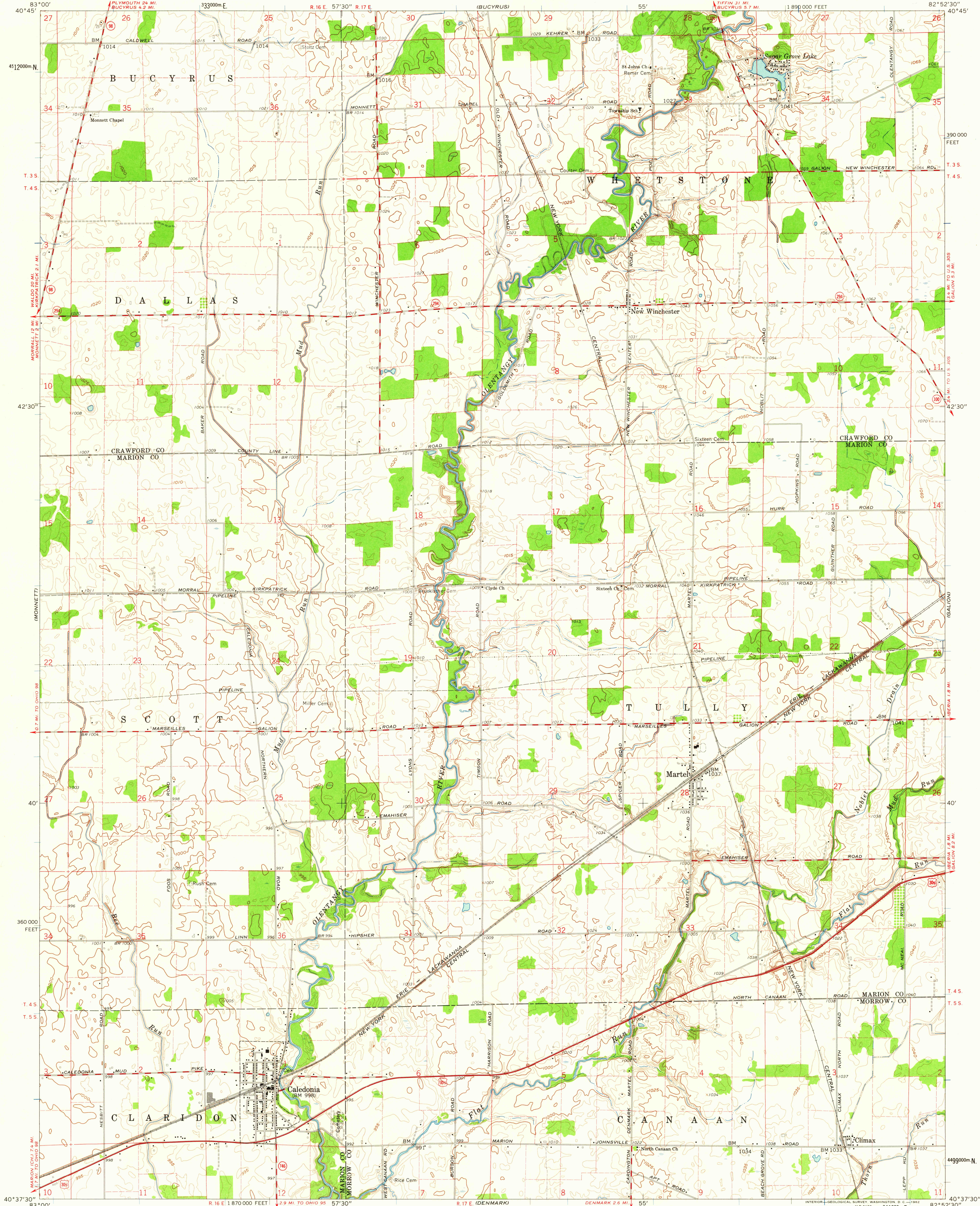


UNITED STATES
DEPARTMENT OF THE INTERIOR
GEOLOGICAL SURVEY

STATE OF OHIO
DEPARTMENT OF HIGHWAYS
DEPARTMENT OF NATURAL RESOURCES
DIVISION OF GEOLOGICAL SURVEY

CALEDONIA QUADRANGLE
OHIO
7.5 MINUTE SERIES (TOPOGRAPHIC)



Mapped, edited, and published by the Geological Survey
Control by USGS and USC&GS
Topography by photogrammetric methods from aerial
photographs taken 1960. Field checked 1961
Polyconic projection. 1927 North American datum.
10,000-foot grid based on Ohio coordinate system, north zone
1000-meter Universal Transverse Mercator grid ticks,
zone 17, shown in blue
Entire area lies within Congress Lands
Land lines based on the First Principal Meridian
Fine red dashed lines indicate selected fence and field lines where
generally visible on aerial photographs. This information is unchecked

SCALE 1:24,000
1 0 1000 2000 3000 4000 5000 6000 7000 FEET
1 0 5 10 KILOMETER
CONTOUR INTERVAL 5 FEET
DATUM IS MEAN SEA LEVEL
THIS MAP COMPLIES WITH NATIONAL MAP ACCURACY STANDARDS
FOR SALE BY U. S. GEOLOGICAL SURVEY, WASHINGTON 25, D. C.
A FOLDER DESCRIBING TOPOGRAPHIC MAPS AND SYMBOLS IS AVAILABLE ON REQUEST

ROAD CLASSIFICATION
Heavy-duty Road Light-duty Road
Medium-duty Road Unimproved dirt Road
U. S. Route State Route

USGS
Historical File
Topographic Division

CALEDONIA, OHIO
NW 1/4 MOUNT GILEAD 15' QUADRANGLE
N4037.5-W8252.5/7.5