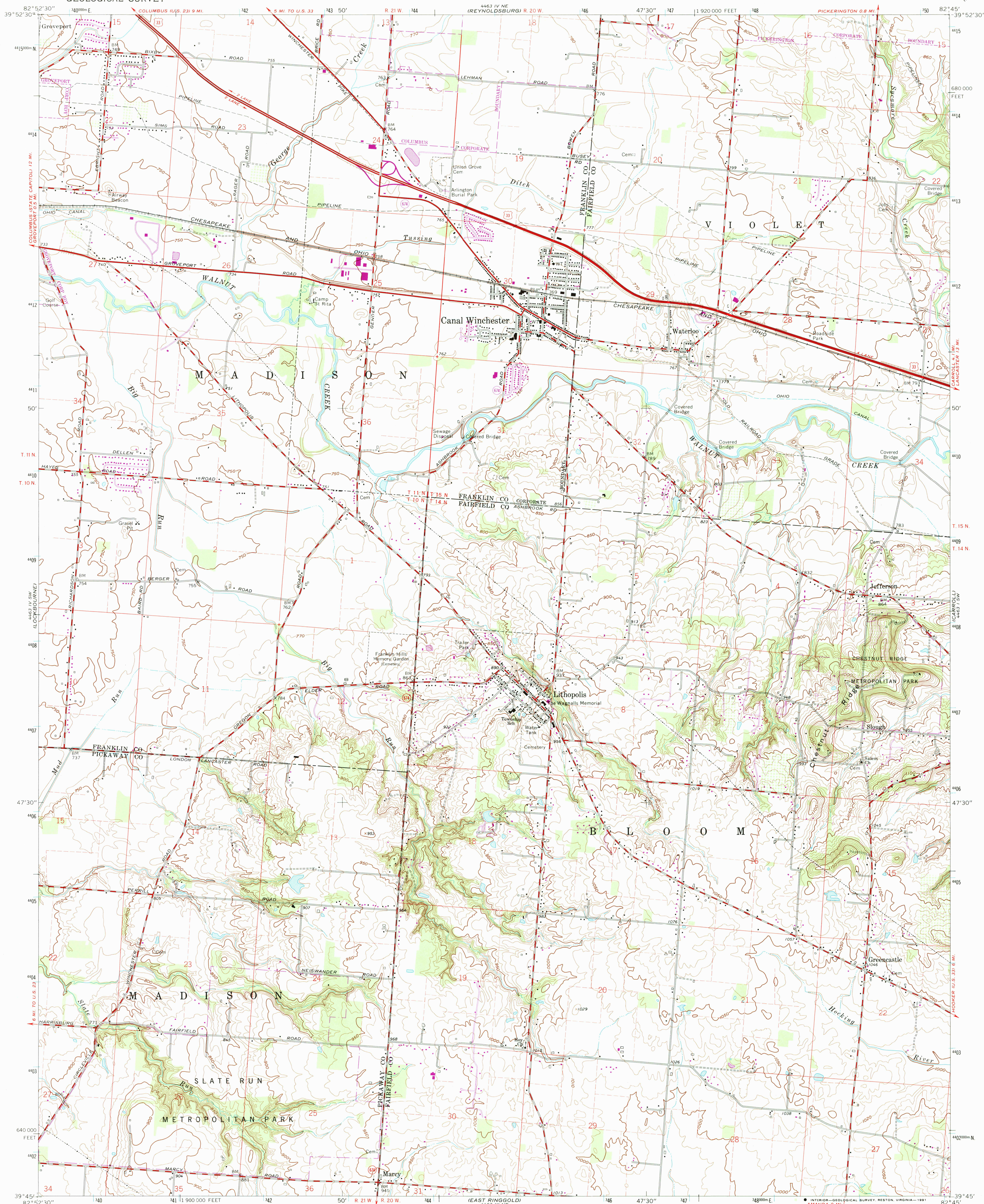


UNITED STATES  
DEPARTMENT OF THE INTERIOR  
GEOLOGICAL SURVEY

CANAL WINCHESTER QUADRANGLE  
OHIO  
7.5 MINUTE SERIES (TOPOGRAPHIC)



Mapped, edited, and published by the Geological Survey  
Revised in cooperation with State of Ohio agencies  
Control by USGS, USC&GS, and Franklin County  
Topography by photogrammetric methods from aerial photographs  
taken 1953. Field checked 1955. Revised 1966  
Polyconic projection. 1927 North American datum  
10,000-foot grid based on Ohio coordinate system, south zone  
1000-meter Universal Transverse Mercator grid ticks,  
zone 17, shown in blue  
The difference between 1927 North American Datum and North  
American Datum of 1983 (NAD 83) for 7.5-minute intersections  
is given in USGS Bulletin 1875. The NAD 83 is shown by  
dashed corner ticks  
Fine red dashed lines indicate selected fence and field lines where  
generally visible on aerial photographs. This information is unchecked  
Entire area lies within Congress Lands east of the Scioto River  
Land lines based on the Ohio River Base

Map photorevised 1987  
No major culture or drainage changes observed

THIS MAP COMPLIES WITH NATIONAL MAP ACCURACY STANDARDS  
FOR SALE BY U.S. GEOLOGICAL SURVEY  
DENVER, COLORADO 80225, OR RESTON, VIRGINIA 22092  
A FOLDER DESCRIBING TOPOGRAPHIC MAPS AND SYMBOLS IS AVAILABLE ON REQUEST

Revisions shown in purple compiled in cooperation with  
State of Ohio agencies from aerial photographs taken  
1966  
1983. This information not field checked. Map edited 1985

CANAL WINCHESTER, OHIO

39082-GF-T024  
PHOTOINSPECTED 1987  
1966  
PHOTOREVISED 1985  
DMA 4463 IV SE-SERIES V852

