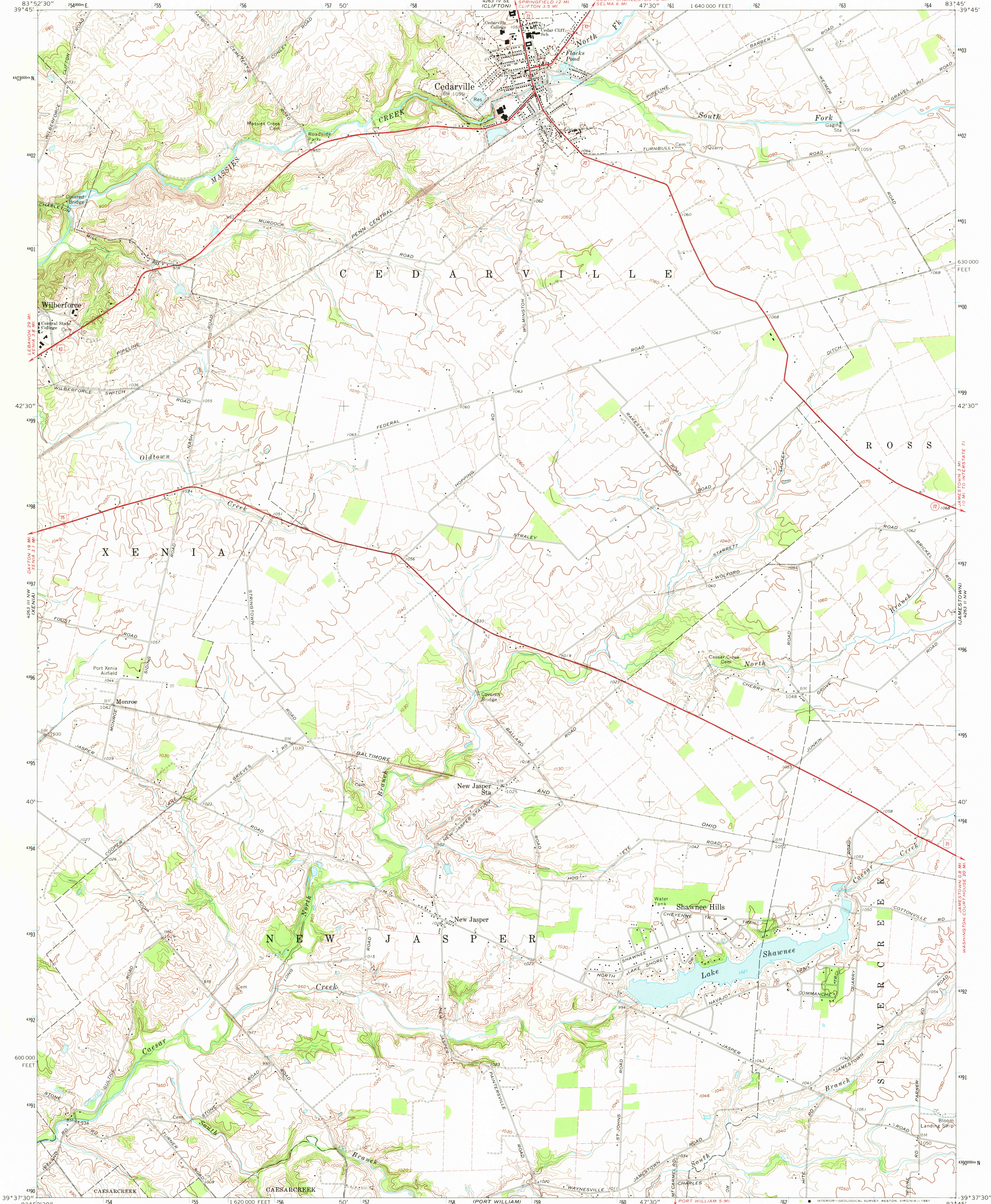


UNITED STATES  
DEPARTMENT OF THE INTERIOR  
GEOLOGICAL SURVEY

CEDARVILLE QUADRANGLE  
OHIO—GREENE CO.  
7.5 MINUTE SERIES (TOPOGRAPHIC)



Mapped, edited, and published by the Geological Survey  
in cooperation with the Army Map Service  
Revised in cooperation with State of Ohio agencies  
Control by USGS and USC&GS

Topography by photogrammetric methods from aerial photographs  
taken 1954. Field checked 1955. Revised from aerial  
photographs taken 1968. Field checked 1968

Polyconic projection. 10,000-foot grid ticks based on  
Ohio coordinate system, south zone  
1000-meter Universal Transverse Mercator grid ticks,  
zone 17, shown in blue. 1927 North American Datum  
To place on the predicted North American Datum 1983  
move the projection lines 3 meters south and  
7 meters west as shown by dashed corner ticks

Fine red dashed lines indicate selected fence and field lines where  
generally visible on aerial photographs. This information is unchecked

UTM GRID AND 1968 MAGNETIC NORTH  
DECLINATION AT CENTER OF SHEET  
Entire area lies within the Virginia Military District  
Map photosinspected 1974  
No major culture or drainage changes observed

THIS MAP COMPLIES WITH NATIONAL MAP ACCURACY STANDARDS  
FOR SALE BY U.S. GEOLOGICAL SURVEY, RESTON, VIRGINIA 22092  
A FOLDER DESCRIBING TOPOGRAPHIC MAPS AND SYMBOLS IS AVAILABLE ON REQUEST

ROAD CLASSIFICATION  
Primary highway, all weather, Light-duty road, all weather,  
hard surface improved surface  
Unimproved road, fair or dry  
weather  
U. S. Route State Route

CEDARVILLE, OHIO  
N3937.5—W8345.7.5

1968  
PHOTOINSPECTED 1974  
AMS 4263 III NE—SERIES V852

RETURN TO:  
USGS NHD HISTORICAL MAP ARCHIVES

NOV 23 1981

1608