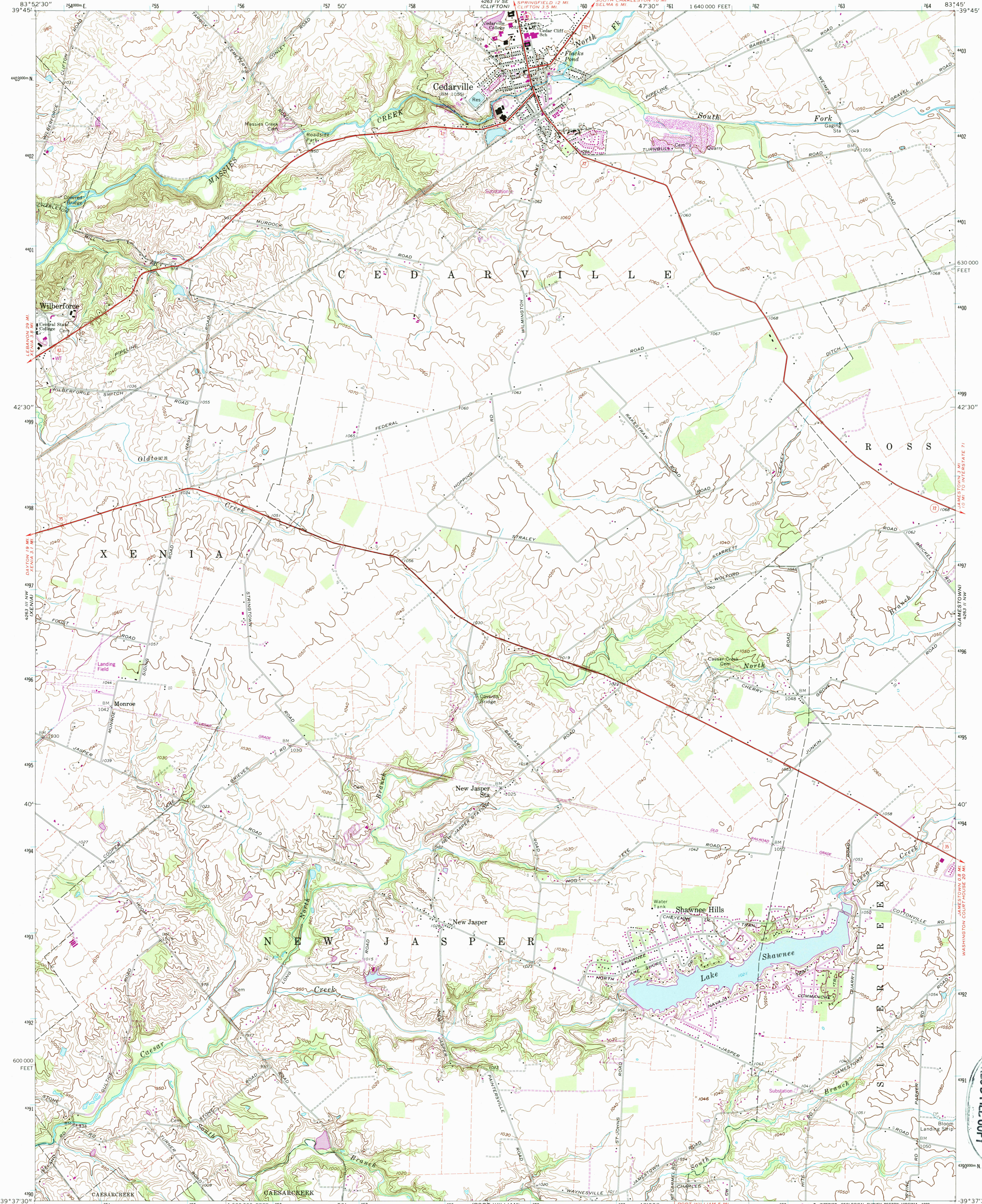


UNITED STATES  
DEPARTMENT OF THE INTERIOR  
GEOLOGICAL SURVEY

CEDARVILLE QUADRANGLE  
OHIO—GREENE CO.  
7.5 MINUTE SERIES (TOPOGRAPHIC)



Mapped, edited, and published by the Geological Survey in cooperation with the Army Map Service. Revised in cooperation with State of Ohio agencies. Control by USGS and USC&GS.

Topography by photogrammetric methods from aerial photographs taken 1954. Field checked 1955. Revised from aerial photographs taken 1968. Field checked 1968.

Polyconic projection. 1927 North American datum. 10,000-foot grid based on Ohio coordinate system, south zone 1000-meter Universal Transverse Mercator grid ticks, zone 17, shown in blue.

To place on the predicted North American Datum 1983 move the projection lines 3 meters south and 7 meters west as shown by dashed corner ticks.

Entire area lies within the Virginia Military District.

Revisions shown in purple and woodland compiled in cooperation with State of Ohio agencies from aerial photographs taken 1983 and other sources. This information not field checked.

Map edited 1987.

THIS MAP COMPLIES WITH NATIONAL MAP ACCURACY STANDARDS FOR SALE BY U. S. GEOLOGICAL SURVEY. DENVER, COLORADO 80225 OR RESTON, VIRGINIA 22092. A FOLDER DESCRIBING TOPOGRAPHIC MAPS AND SYMBOLS IS AVAILABLE ON REQUEST.

ROAD CLASSIFICATION

Primary highway, all weather, hard surface

Light-duty road, all weather, improved surface

Unimproved road, fair or dry weather

U. S. Route

State Route

CEDARVILLE, OHIO  
39083-F7-TF-024

1968  
PHOTOREVISED 1987  
DMA 4263 III NE—SERIES V852