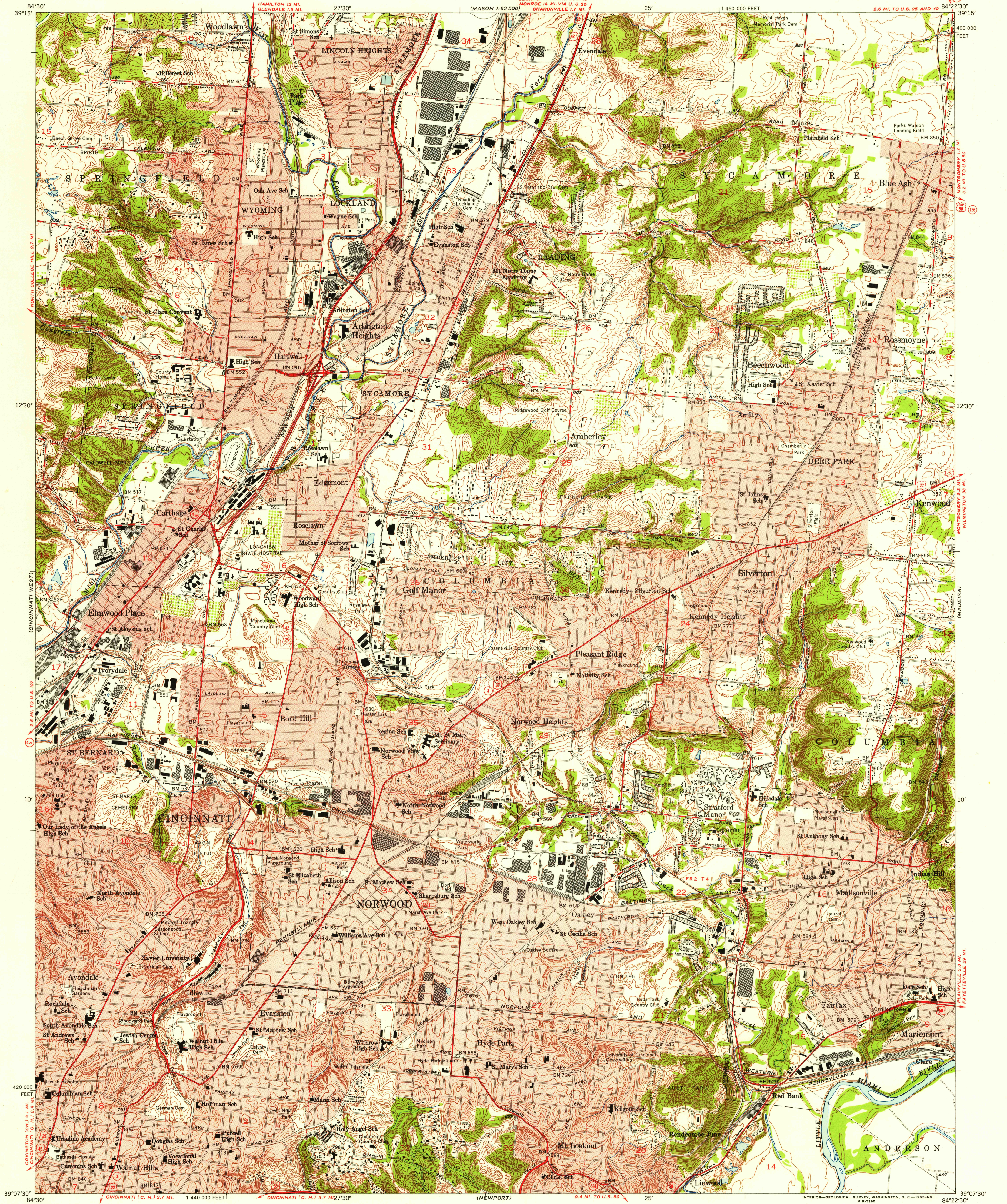


UNITED STATES
DEPARTMENT OF THE INTERIOR
GEOLOGICAL SURVEY

CINCINNATI EAST QUADRANGLE
OHIO—HAMILTON CO.
7.5 MINUTE SERIES (TOPOGRAPHIC)

NW/4 EAST CINCINNATI 15' QUADRANGLE
2.6 MI. TO U.S. 25 AND 42
84°22'30" 39°15'



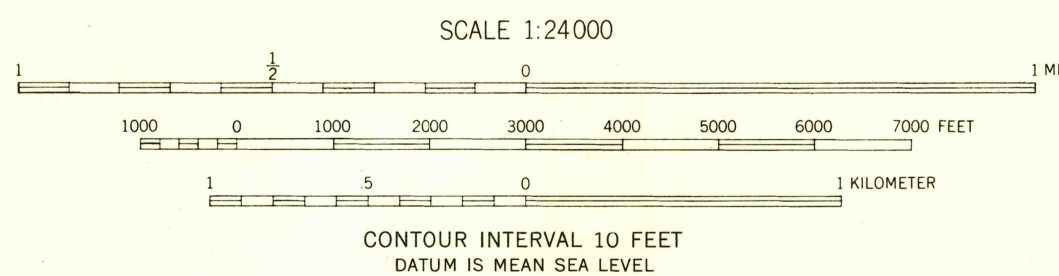
Mapped, edited, and published by the Geological Survey

Control by USC&GS and City of Cincinnati
Topography by multiplex methods from aerial photographs
taken 1949 and in part by City of Cincinnati 1950
Field check 1953

Polyconic projection, 1927 North American datum
10,000-foot grid based on Ohio coordinate system,
south zone

Red tint indicates areas in which only
landmark buildings are shown
Dotted land lines were established by private
subdivision of Symmes Purchase

TRUE NORTH
MAGNETIC NORTH
APPROXIMATE MEAN
DECLINATION, 1953



ROAD CLASSIFICATION
Heavy-duty ——— 4 LANE 16 LANE Light-duty ———
Medium-duty ——— 4 LANE 16 LANE Unimproved dirt ———
U. S. Route ——— State Route ———



CINCINNATI EAST, OHIO
NW/4 EAST CINCINNATI 15' QUADRANGLE
N 3907.5—W 8422.5/7.5

1953

JUL 6 1955

THIS MAP COMPLIES WITH NATIONAL MAP ACCURACY STANDARDS
FOR SALE BY U. S. GEOLOGICAL SURVEY, WASHINGTON 25, D. C.
A FOLDER DESCRIBING TOPOGRAPHIC MAPS AND SYMBOLS IS AVAILABLE ON REQUEST