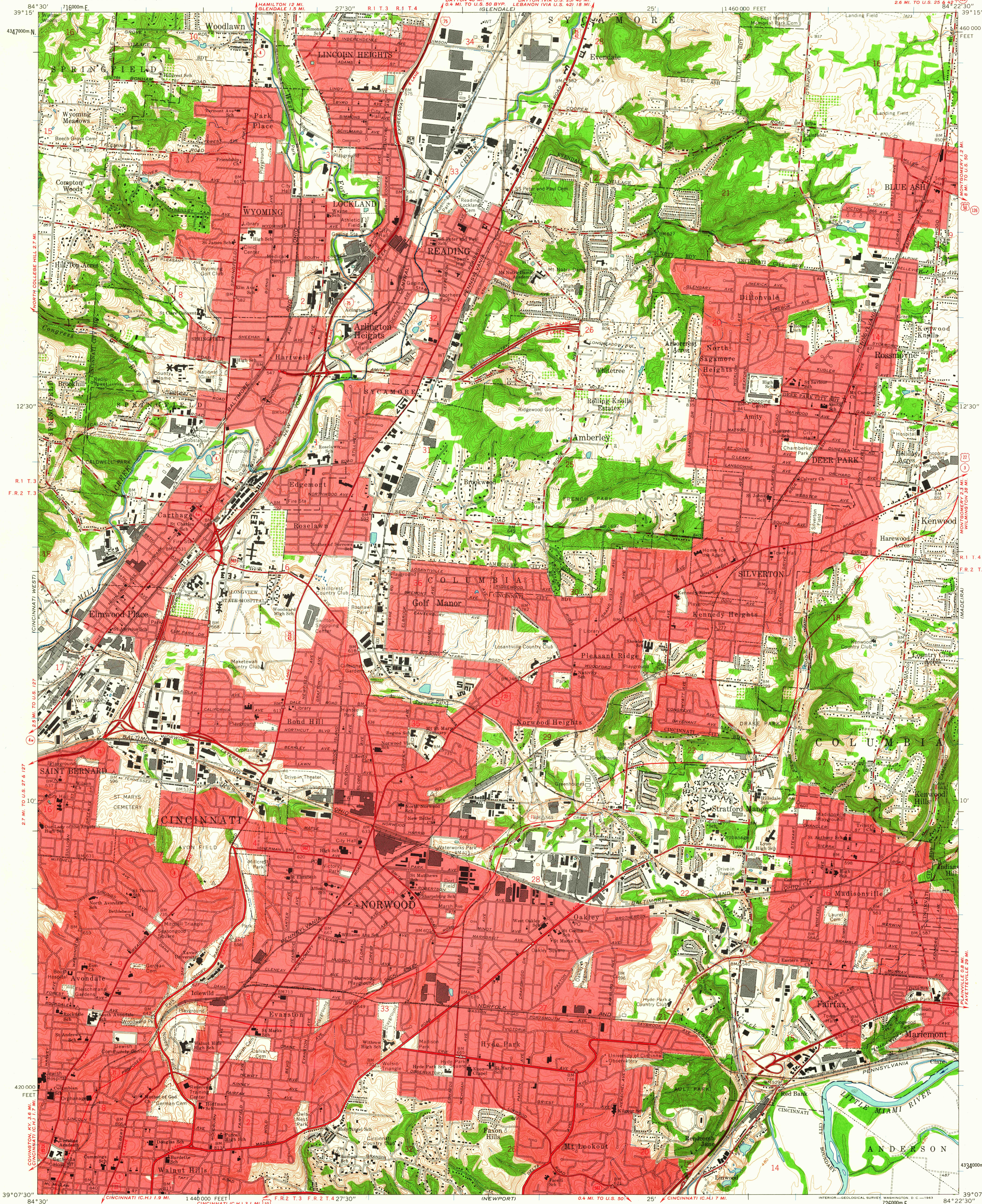


UNITED STATES
DEPARTMENT OF THE INTERIOR
GEOLOGICAL SURVEY

CINCINNATI EAST QUADRANGLE
OHIO—HAMILTON CO.
7.5 MINUTE SERIES (TOPOGRAPHIC)
NW/4 EAST CINCINNATI 15' QUADRANGLE
2.6 MI. TO U.S. 25 84° 22' 30" W



Mapped, edited, and published by the Geological Survey

Control by USGS, USC&GS, USCE, and City of Cincinnati

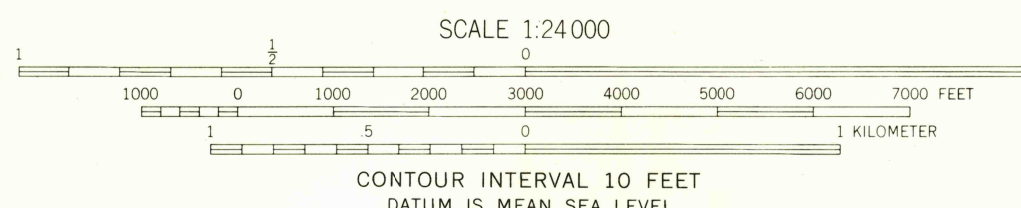
Topography by photogrammetric methods from aerial photographs taken 1949 and in part by City of Cincinnati
Field checked 1953. Revised 1961

Polyconic projection. 1927 North American datum
10,000-foot grid based on Ohio coordinate system, south zone
1000-meter Universal Transverse Mercator grid ticks, zone 16, shown in blue

Red tint indicates areas in which only landmark buildings are shown

Area east of the Little Miami River lies within the Virginia Military District. Area west of the Little Miami River lies within the Between the Miamis. Land lines based on the Great Miami River Base. Dotted land lines established by private subdivision of the Symmes Purchase

TRUE NORTH
MAGNETIC NORTH
APPROXIMATE MEAN
DECLINATION, 1961



ROAD CLASSIFICATION
Heavy-duty ——— Light-duty ———
Medium-duty ——— Unimproved dirt ———
Interstate Route U.S. Route State Route



CINCINNATI EAST, OHIO
NW/4 EAST CINCINNATI 15' QUADRANGLE
N3907.5—W8422.5/7.5

1961

THIS MAP COMPLIES WITH NATIONAL MAP ACCURACY STANDARDS
FOR SALE BY U. S. GEOLOGICAL SURVEY, WASHINGTON 25, D. C.
A FOLDER DESCRIBING TOPOGRAPHIC MAPS AND SYMBOLS IS AVAILABLE ON REQUEST

NOV 2 6 1963

3/20