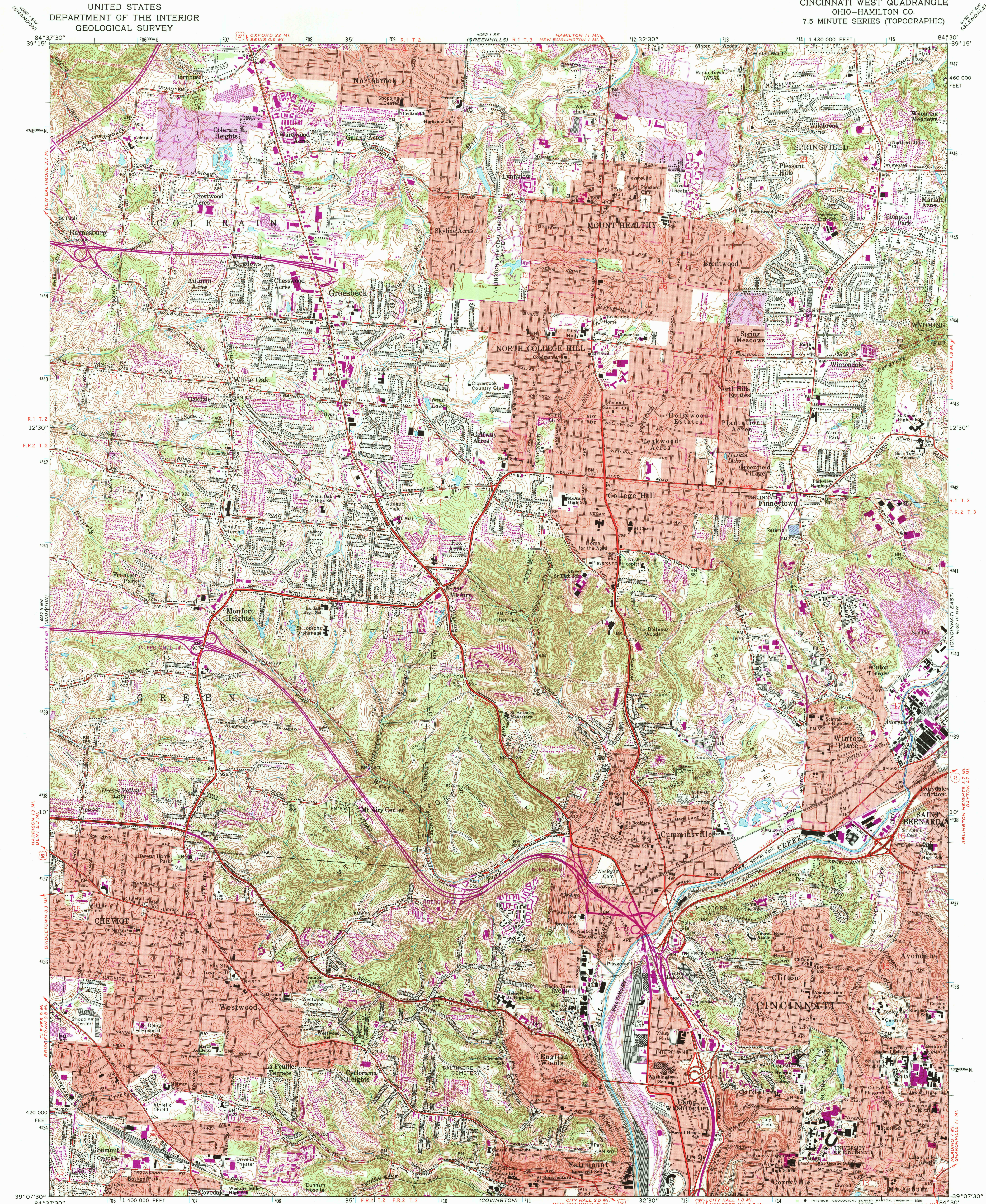


UNITED STATES
DEPARTMENT OF THE INTERIOR
GEOLOGICAL SURVEY

CINCINNATI WEST QUADRANGLE
OHIO—HAMILTON CO.
7.5 MINUTE SERIES (TOPOGRAPHIC)



Mapped, edited, and published by the Geological Survey
Control by USGS, NOS/NOAA, and City of Cincinnati

Topography by photogrammetric methods from aerial photographs
taken 1949 and in part by City of Cincinnati. Field checked
1953. Revised 1961

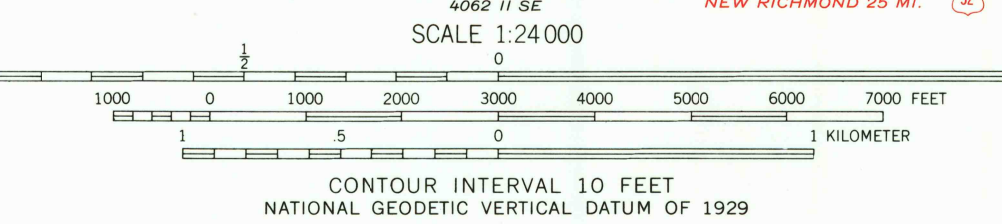
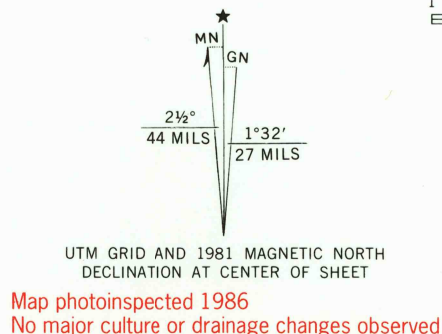
Polyconic projection. 10,000-foot grid ticks based on Ohio coordinate
system, south zone. 1000-meter Universal Transverse Mercator
grid ticks, zone 16, shown in blue. 1927 North American Datum
To place on the predicted North American Datum 1983 move
the projection lines 3 meters south and 5 meters west as shown
by dashed corner ticks

Red tint indicates areas in which only landmark buildings are shown

Entire area lies within the Between the Miamis
Land lines based on the Great Miami River Base
Dotted land lines established by private subdivision of the Symmes Purchase

Revisions shown in purple and woodland compiled in
cooperation with State of Ohio agencies from
aerial photographs taken 1979 and other sources
This information not field checked. Map edited 1981

Purple tint indicates extension of urban areas



THIS MAP COMPLIES WITH NATIONAL MAP ACCURACY STANDARDS
FOR SALE BY U.S. GEOLOGICAL SURVEY
DENVER, COLORADO 80225, OR RESTON, VIRGINIA 22092
A FOLDER DESCRIBING TOPOGRAPHIC MAPS AND SYMBOLS IS AVAILABLE ON REQUEST

ROAD CLASSIFICATION
Heavy-duty ——— Light-duty ———
Medium-duty ——— Unimproved dirt ———
Interstate Route ——— U.S. Route ——— State Route ———



USGS NMU HISTORICAL MAP

CINCINNATI WEST, OHIO

OCT 11 1989

REC'D FILE COPY

39084-B5-TF-024
PHOTOINSPECTED 1986
1961
PHOTOREVISED 1981
DMA 4062 II NE-SERIES V852