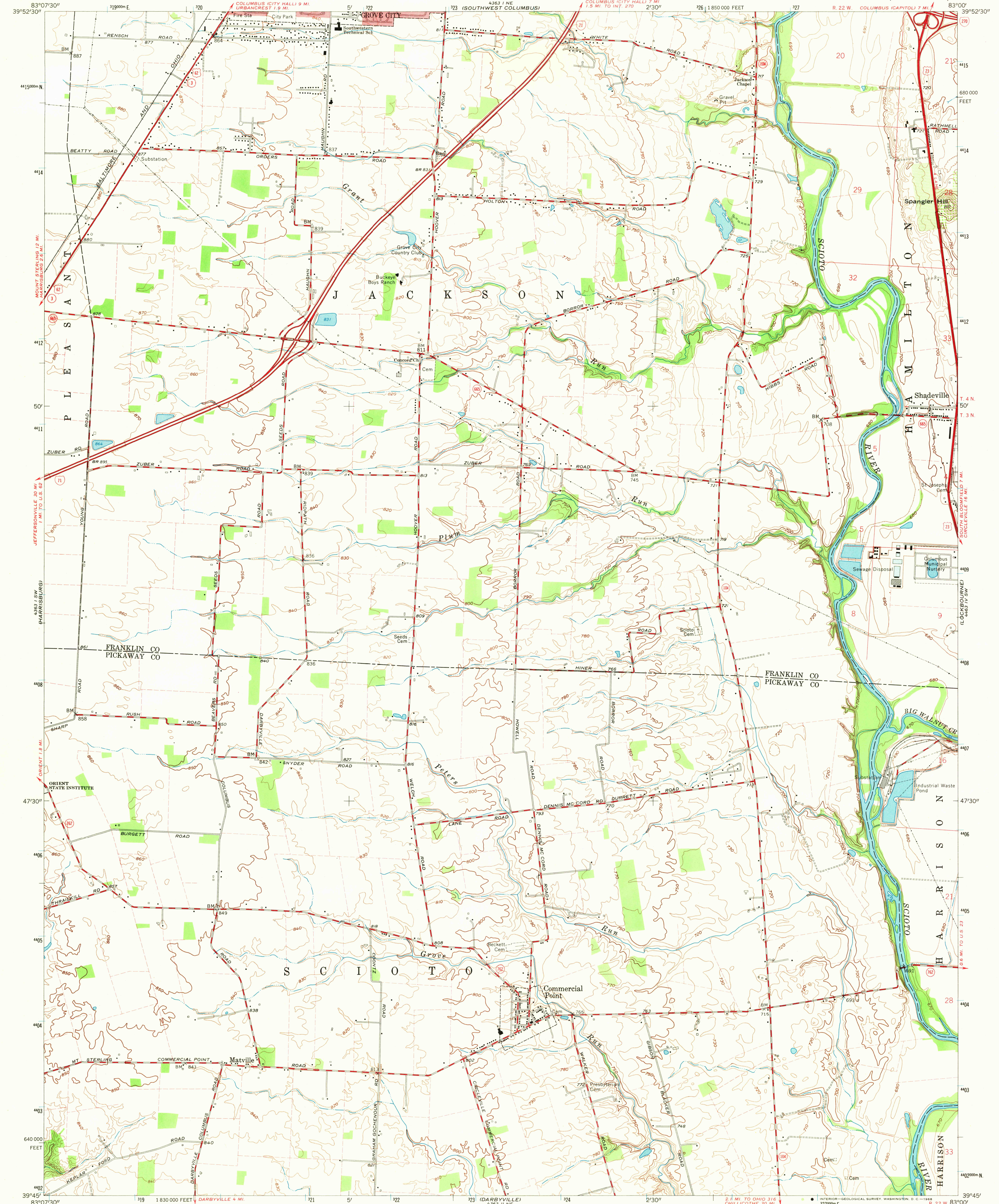


43°11'N
68°11'W
(GALLOP)

UNITED STATES
DEPARTMENT OF THE INTERIOR
GEOLOGICAL SURVEY

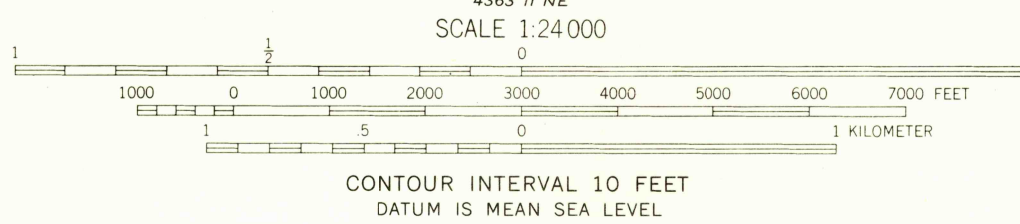
COMMERCIAL POINT QUADRANGLE
OHIO
7.5 MINUTE SERIES (TOPOGRAPHIC)

43°11'N
68°11'W
(SOUTHEAST COLUMBUS)



Mapped, edited, and published by the Geological Survey
Revised in cooperation with State of Ohio agencies
Control by USGS and USC&GS
Topography by photogrammetric methods from aerial photographs
taken 1953. Field checked 1955. Revised 1966
Polyconic projection. 1927 North American datum
10,000-foot grid based on Ohio coordinate system, south zone
1000-meter Universal Transverse Mercator grid ticks,
zone 17, shown in blue
Fine red dashed lines indicate selected fence and field lines where
generally visible on aerial photographs. This information is unchecked
Red tint indicates areas in which only landmark buildings are shown
Area west of the Scioto River lies within the Virginia Military District
Area east of the Scioto River lies within Congress Lands east of the Scioto
River. Land lines based on the Scioto River Base

UTM GRID AND 1966 MAGNETIC NORTH
DECLINATION AT CENTER OF SHEET



USGS
Historical File
Topographic Division



ROAD CLASSIFICATION
Heavy-duty ——— Light-duty ———
Medium-duty ——— Unimproved dirt ———
○ Interstate Route ○ U. S. Route ○ State Route

COMMERCIAL POINT, OHIO
N 3945—W 8300/7.5

1966

AMS 4363 I SE—SERIES V852

U.S.G.S.
FILE COPY
TOPOGRAPHIC DIVISION

2635
JAN 3 1999