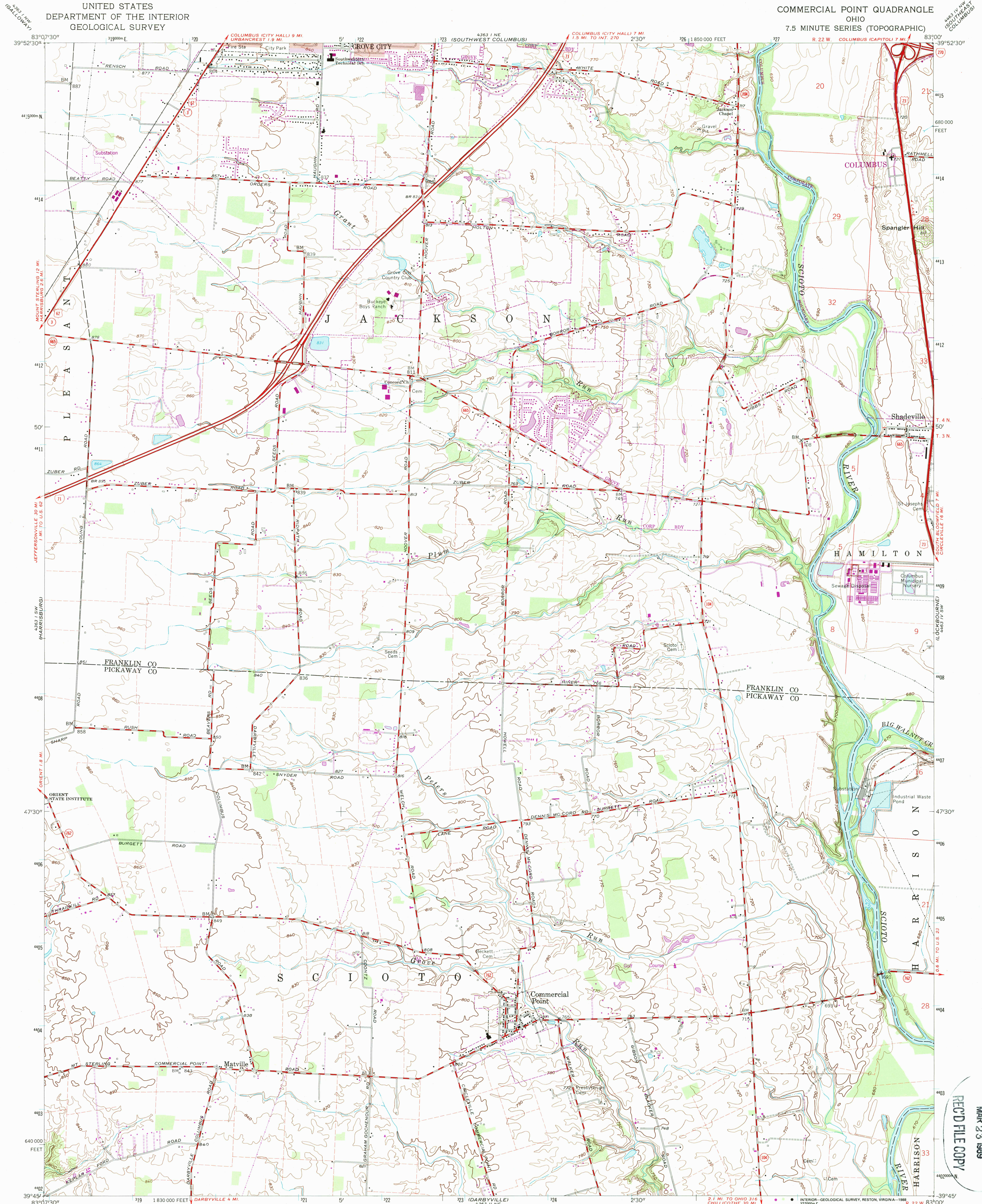


UNITED STATES
DEPARTMENT OF THE INTERIOR
GEOLOGICAL SURVEY

COMMERCIAL POINT QUADRANGLE
OHIO
7.5 MINUTE SERIES (TOPOGRAPHIC)



Mapped, edited, and published by the Geological Survey
Revised in cooperation with State of Ohio agencies
Control by USGS and USC&GS
Topography by photogrammetric methods from aerial photographs
taken 1953. Field checked 1955. Revised 1966
Polyconic projection. 1927 North American Datum
10,000-foot grid ticks based on Ohio coordinate system, south zone
1000-meter Universal Transverse Mercator grid ticks,
zone 17, shown in blue
To place on the predicted North American Datum 1983
move the projection lines 3 meters south and
9 meters west as shown by dashed corner ticks
Fine red dashed lines indicate selected fence and field lines where
generally visible on aerial photographs. This information is unchecked
Red tint indicates areas in which only landmark buildings are shown

Area west of the Scioto River lies within the Virginia Military District
Area east of the Scioto River lies within Congress Lands east of the
Scioto River. Land lines based on the Scioto River Base
There may be private inholdings within the boundaries of
the National or State reservations shown on this map

CONTOUR INTERVAL 10 FEET
NATIONAL GEODETIC VERTICAL DATUM OF 1929
THIS MAP COMPLIES WITH NATIONAL MAP ACCURACY STANDARDS
FOR SALE BY U. S. GEOLOGICAL SURVEY
DENVER, COLORADO 80225 OR RESTON, VIRGINIA 22092
A FOLDER DESCRIBING TOPOGRAPHIC MAPS AND SYMBOLS IS AVAILABLE ON REQUEST

Revisions shown in purple and woodland compiled in cooperation
with State of Ohio agencies from aerial photographs
taken 1963 and other sources. This information not field checked
Map edited 1988
Purple tint indicates extension of urban areas

COMMERCIAL POINT, OHIO
39083-G1-TF-024

1966
PHOTOREVISED 1988
DMA 4363 I SE - SERIES V852

USGS NHD HISTORICAL MAP
MAR 23 1989
REC'D FILE COPY