

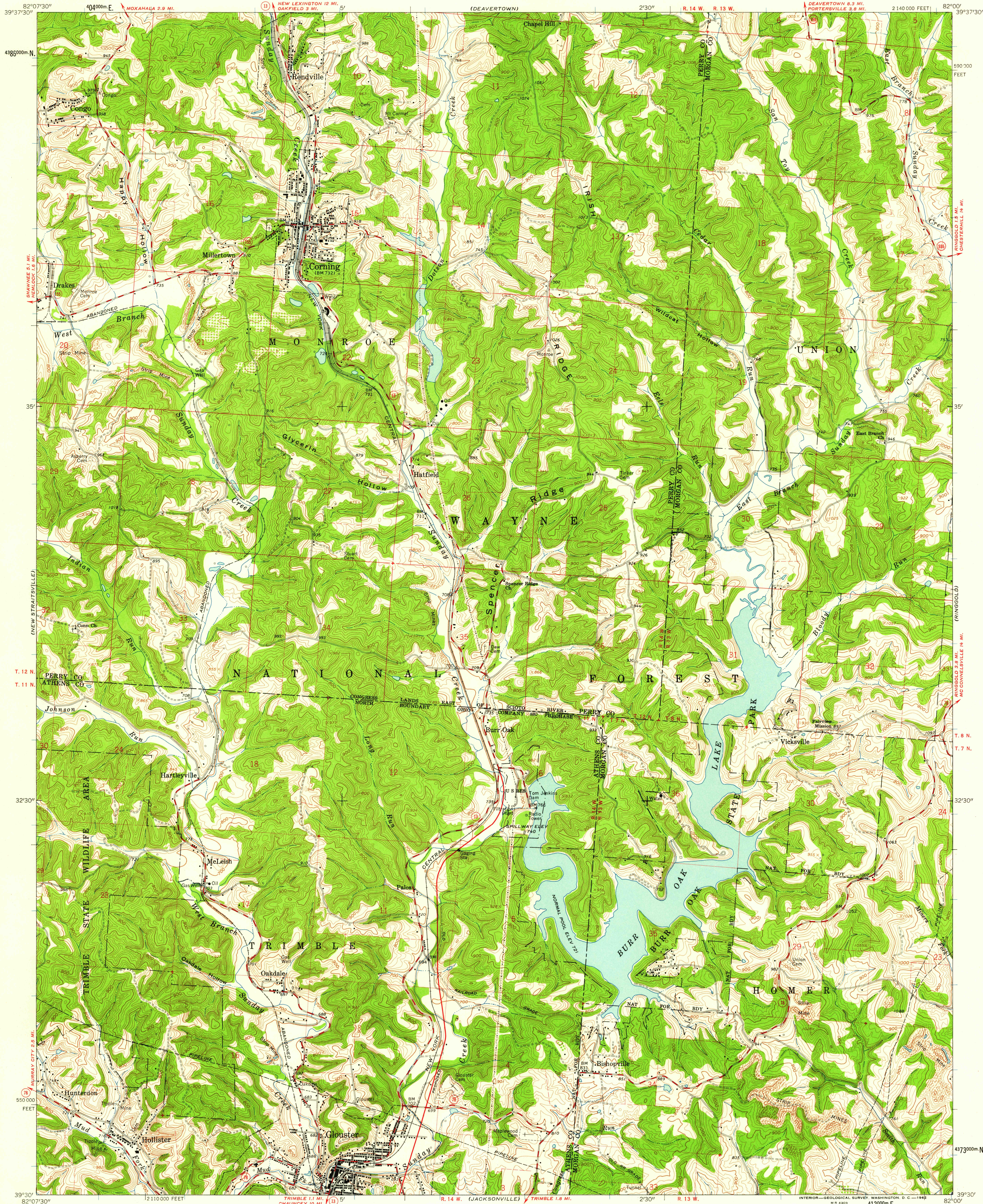
(NEW LEXINGTON)

UNITED STATES  
DEPARTMENT OF THE INTERIOR  
GEOLOGICAL SURVEY

STATE OF OHIO  
DEPARTMENT OF HIGHWAYS  
DEPARTMENT OF NATURAL RESOURCES  
DIVISION OF GEOLOGICAL SURVEY

CORNING QUADRANGLE  
OHIO  
7.5 MINUTE SERIES (TOPOGRAPHIC)

(ROCKY LOOK)



Mapped, edited, and published by the Geological Survey

Control by USGS and USC&GS

Topography by photogrammetric methods from aerial photographs taken 1960. Field checked 1961

Polyconic projection. 1927 North American datum

10,000-foot grid based on Ohio coordinate system, south zone

1000-meter Universal Transverse Mercator grid ticks, zone 17, shown in blue

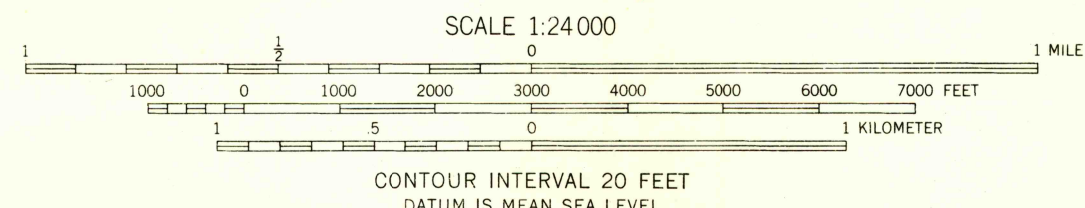
Fine red dashed lines indicate selected fence and field lines where generally visible on aerial photographs. This information is unchecked

Unlabeled wells are oil wells

Land lines based on the Ohio River Base

Dotted land lines established by private subdivision of the Ohio Company Purchase

APPROXIMATE MEAN  
DECLINATION, 1961



USGS  
Historical File  
Topographic Division

ROAD CLASSIFICATION  
Medium-duty Light-duty  
Unimproved dirt  
State Route

CORNING, OHIO  
SE/4 NEW LEXINGTON 15' QUADRANGLE  
N 3930-W 8200/7.5

1961

JAN 22 1963

2720