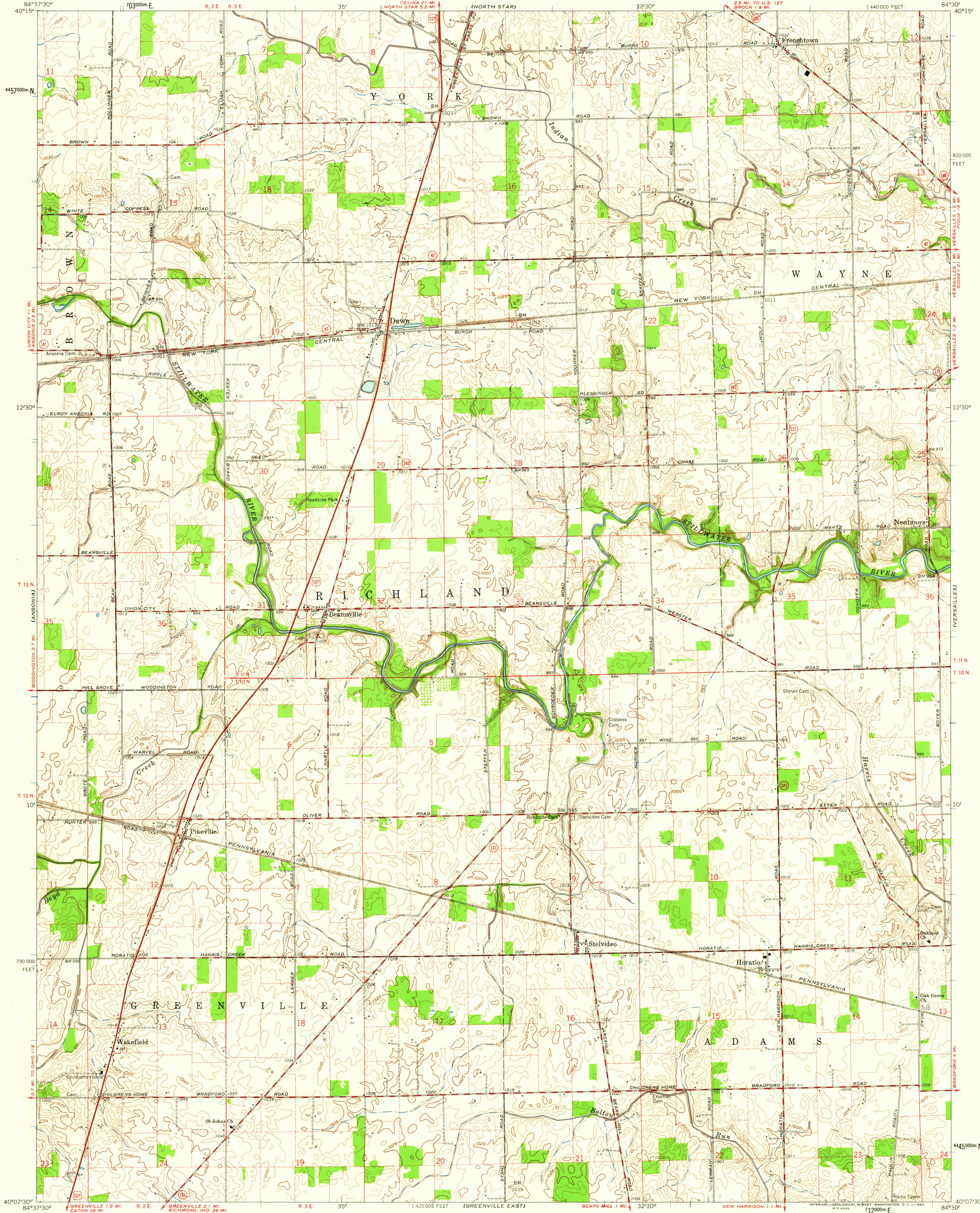


UNITED STATES
DEPARTMENT OF THE INTERIOR
GEOLOGICAL SURVEY

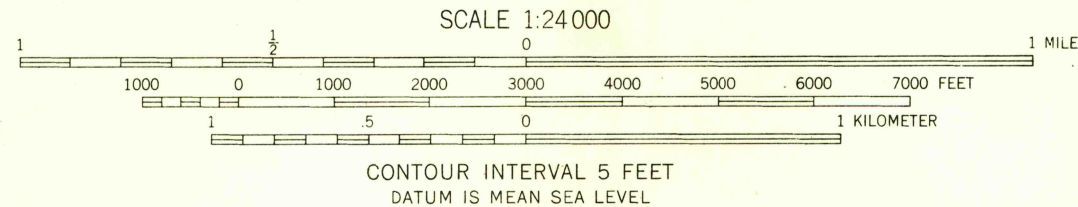
STATE OF OHIO
DEPARTMENT OF HIGHWAYS
DEPARTMENT OF NATURAL RESOURCES
DIVISION OF GEOLOGICAL SURVEY

DAWN QUADRANGLE
OHIO—DARKE CO.
7.5 MINUTE SERIES (TOPOGRAPHIC)
NE/4 GREENVILLE 15' QUADRANGLE
1:440,000 FEET



Mapped, edited, and published by the Geological Survey
Control by USGS and USC&GS
Topography by photogrammetric methods from aerial
photographs taken 1960. Field checked 1961
Polyconic projection, 1927 North American datum
10,000-foot grid based on Ohio coordinate system, south zone
1000-meter Universal Transverse Mercator grid ticks,
zone 16, shown in blue
Entire area lies within the Miami River Survey
Land lines based on the Great Miami River Base
Fine red dashed lines indicate selected fence and field lines where
generally visible on aerial photographs. This information is unchecked

APPROXIMATE MEAN
DECLINATION, 1961



USGS
Historical File
Topographic Division



ROAD CLASSIFICATION
Heavy-duty ——— Light-duty ———
Medium-duty ——— Unimproved dirt ———
U. S. Route ——— State Route ———

DAWN, OHIO
NE/4 GREENVILLE 15' QUADRANGLE
N 4007.5—W 8430/7.5
1961

THIS MAP COMPLIES WITH NATIONAL MAP ACCURACY STANDARDS
FOR SALE BY U. S. GEOLOGICAL SURVEY, WASHINGTON 25, D. C.
A FOLDER DESCRIBING TOPOGRAPHIC MAPS AND SYMBOLS IS AVAILABLE ON REQUEST