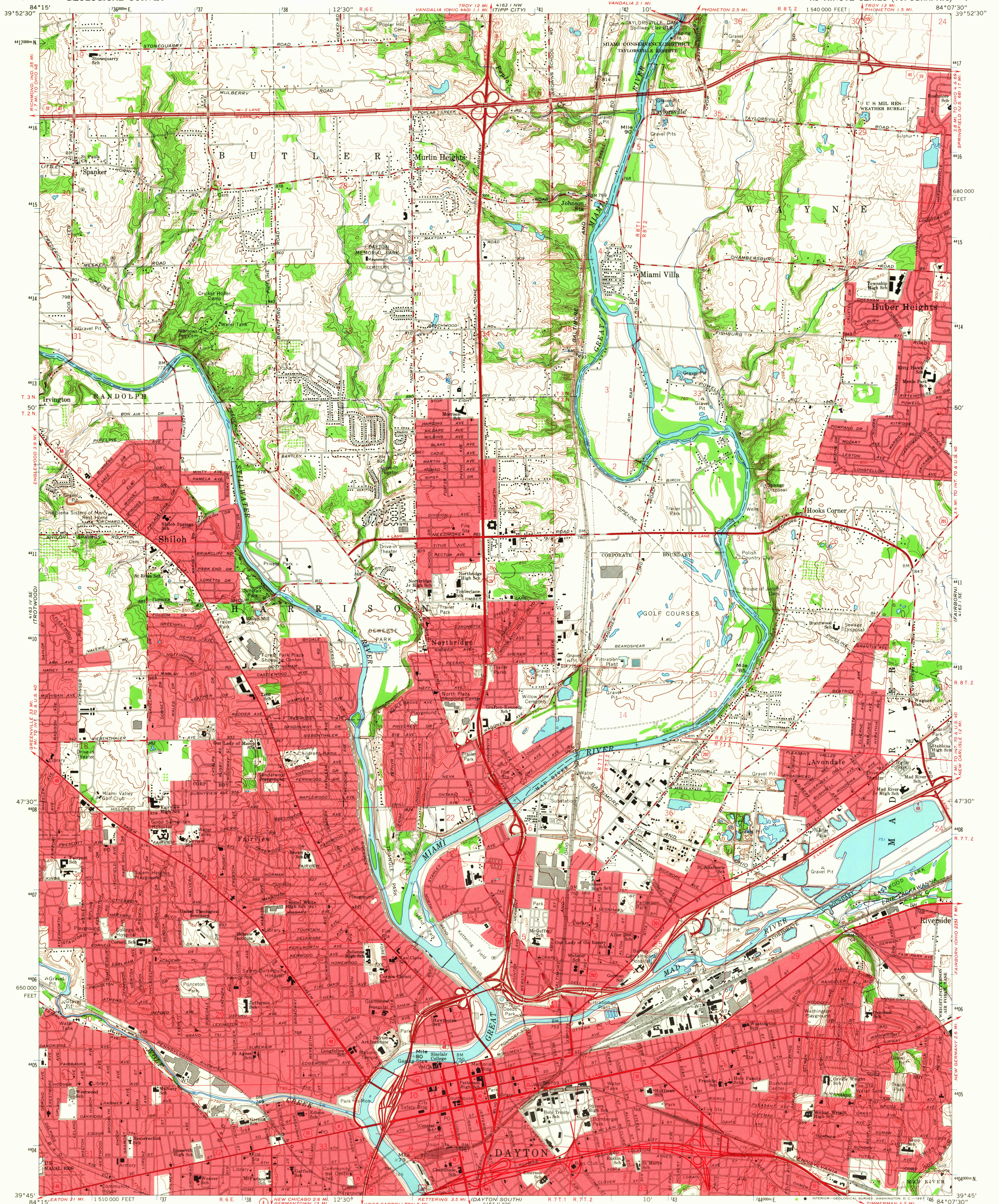
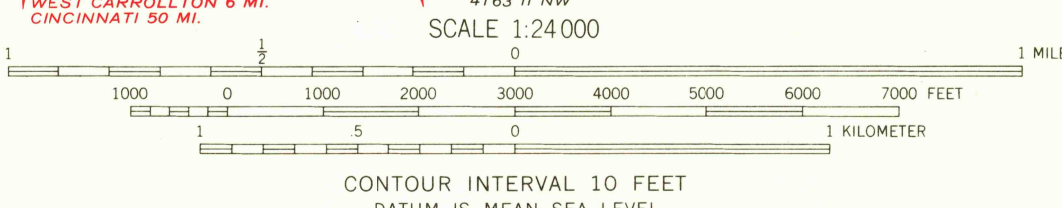


UNITED STATES  
DEPARTMENT OF THE INTERIOR  
GEOLOGICAL SURVEY

DAYTON NORTH QUADRANGLE  
OHIO—MONTGOMERY CO.  
7.5 MINUTE SERIES (TOPOGRAPHIC)



Mapped, edited, and published by the Geological Survey  
in cooperation with the Army Map Service  
Revised in cooperation with State of Ohio agencies  
Control by USGS and USC&GS  
Topography by photogrammetric methods from aerial photographs  
taken 1954. Field checked 1955. Revised from aerial  
photographs taken 1964. Field checked 1965  
Polyconic projection. 1927 North American datum  
10,000-foot grid based on Ohio coordinate system, south zone  
1000-meter Universal Transverse Mercator grid ticks, zone 16, shown in blue  
Fine red dashed lines indicate selected fence and field lines where  
generally visible on aerial photographs. This information is unchecked  
Red tint indicates areas in which only landmark buildings are shown  
Area covered by dashed light-blue pattern is subject to  
controlled inundation to 818 feet  
Area west of the Great Miami River lies within the Miami River Survey  
Area east of the Great Miami River lies within the Between the Miamis  
Land lines based on the Great Miami River Base



THIS MAP COMPLIES WITH NATIONAL MAP ACCURACY STANDARDS  
FOR SALE BY U.S. GEOLOGICAL SURVEY, WASHINGTON, D.C. 20242  
A FOLDER DESCRIBING TOPOGRAPHIC MAPS AND SYMBOLS IS AVAILABLE ON REQUEST

USGS  
Historical File  
Topographic Division

USGS  
Topographic Division

ROAD CLASSIFICATION  
Heavy-duty ——— Light-duty ———  
Medium-duty ——— Unimproved dirt ———  
Interstate Route ——— U.S. Route ——— State Route ———

DAYTON NORTH, OHIO  
N3945—W8407.5/7.5

1965

AMS 4163 1 SW—SERIES W852

4230  
JAN 26 1968